

APPENDIX D
Reservoir Water Surface Elevation Plots

TABLE OF CONTENTS

List of Figures**Hell Hole Reservoir**

- Figure D-1. Hell Hole Reservoir Water Surface Elevation in Relation to the Hell Hole Boat Ramp Operational Range During Wet Water Years.
- Figure D-2. Hell Hole Reservoir Water Surface Elevation in Relation to the Hell Hole Boat Ramp Operational Range During Above Normal Water Years.
- Figure D-3. Hell Hole Reservoir Water Surface Elevation in Relation to the Hell Hole Boat Ramp Operational Range During Below Normal Water Years.
- Figure D-4. Hell Hole Reservoir Water Surface Elevation in Relation to the Hell Hole Boat Ramp Operational Range During Dry Water Years.
- Figure D-5. Hell Hole Reservoir Water Surface Elevation in Relation to the Hell Hole Boat Ramp Operational Range During Critical Water Years.
- Figure D-6. Hell Hole Reservoir Water Surface Elevation in Relation to the Hell Hole Boat Ramp Operational Range During Extreme Critical Water Years.

French Meadows Reservoir

- Figure D-7. French Meadows Reservoir Water Surface Elevation in Relation to the Hell Hole Boat Ramp Operational Range During Wet Water Years.
- Figure D-8. French Meadows Reservoir Water Surface Elevation in Relation to the Hell Hole Boat Ramp Operational Range During Above Normal Water Years.
- Figure D-9. French Meadows Reservoir Water Surface Elevation in Relation to the Hell Hole Boat Ramp Operational Range During Below Normal Water Years.
- Figure D-10. French Meadows Reservoir Water Surface Elevation in Relation to the Hell Hole Boat Ramp Operational Range During Dry Water Years.
- Figure D-11. French Meadows Reservoir Water Surface Elevation in Relation to the Hell Hole Boat Ramp Operational Range During Critical Water Years.
- Figure D-12. French Meadows Reservoir Water Surface Elevation in Relation to the Hell Hole Boat Ramp Operational Range During Extreme Critical Water Years.

FIGURES

Figure D-1. Hell Hole Reservoir Water Surface Elevation in Relation to the Hell Hole Boat Ramp Operational Range during Wet Water Years.

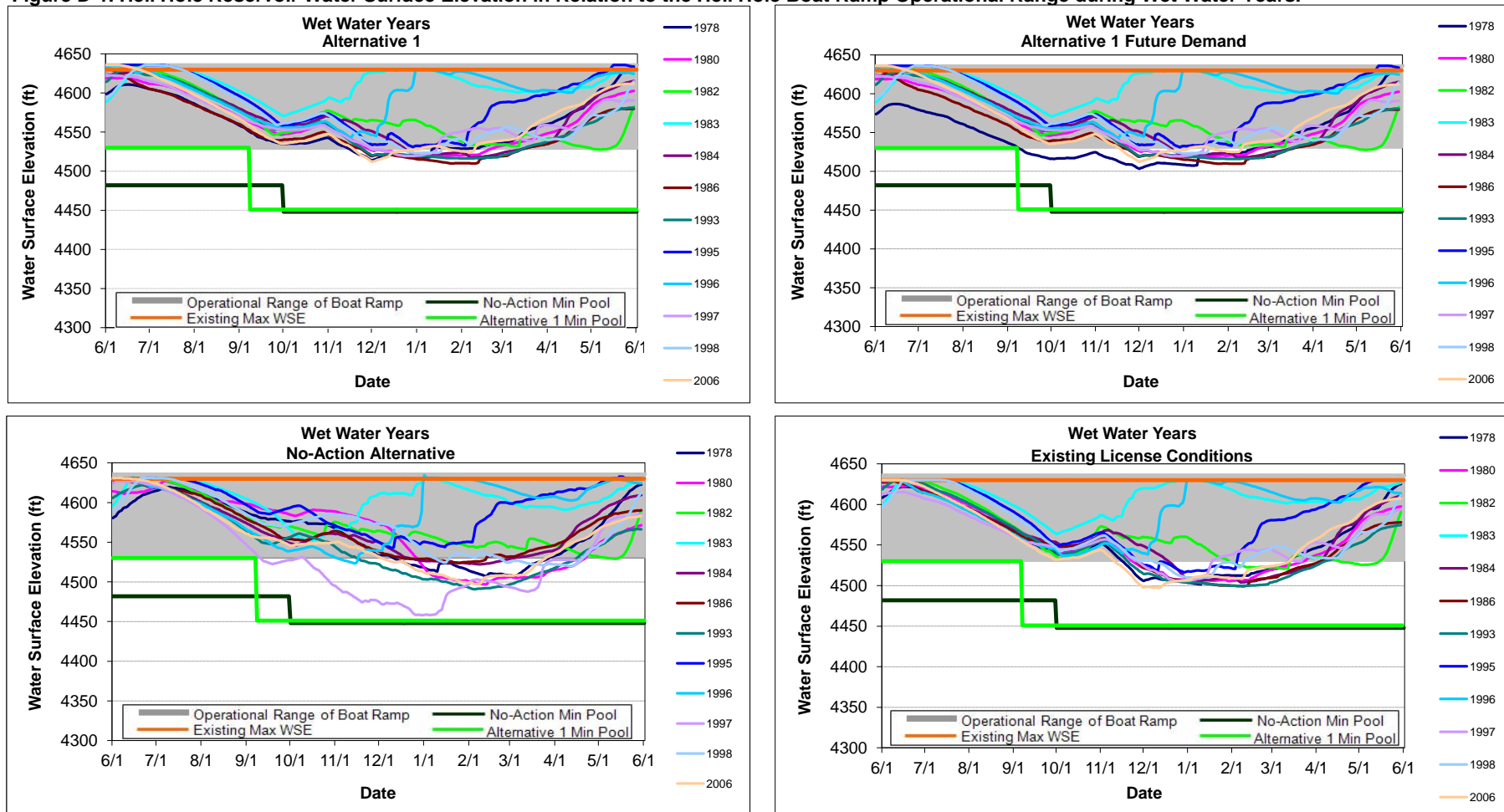


Figure D-2. Hell Hole Reservoir Water Surface Elevation in Relation to the Hell Hole Boat Ramp Operational Range during Above Normal Water Years.

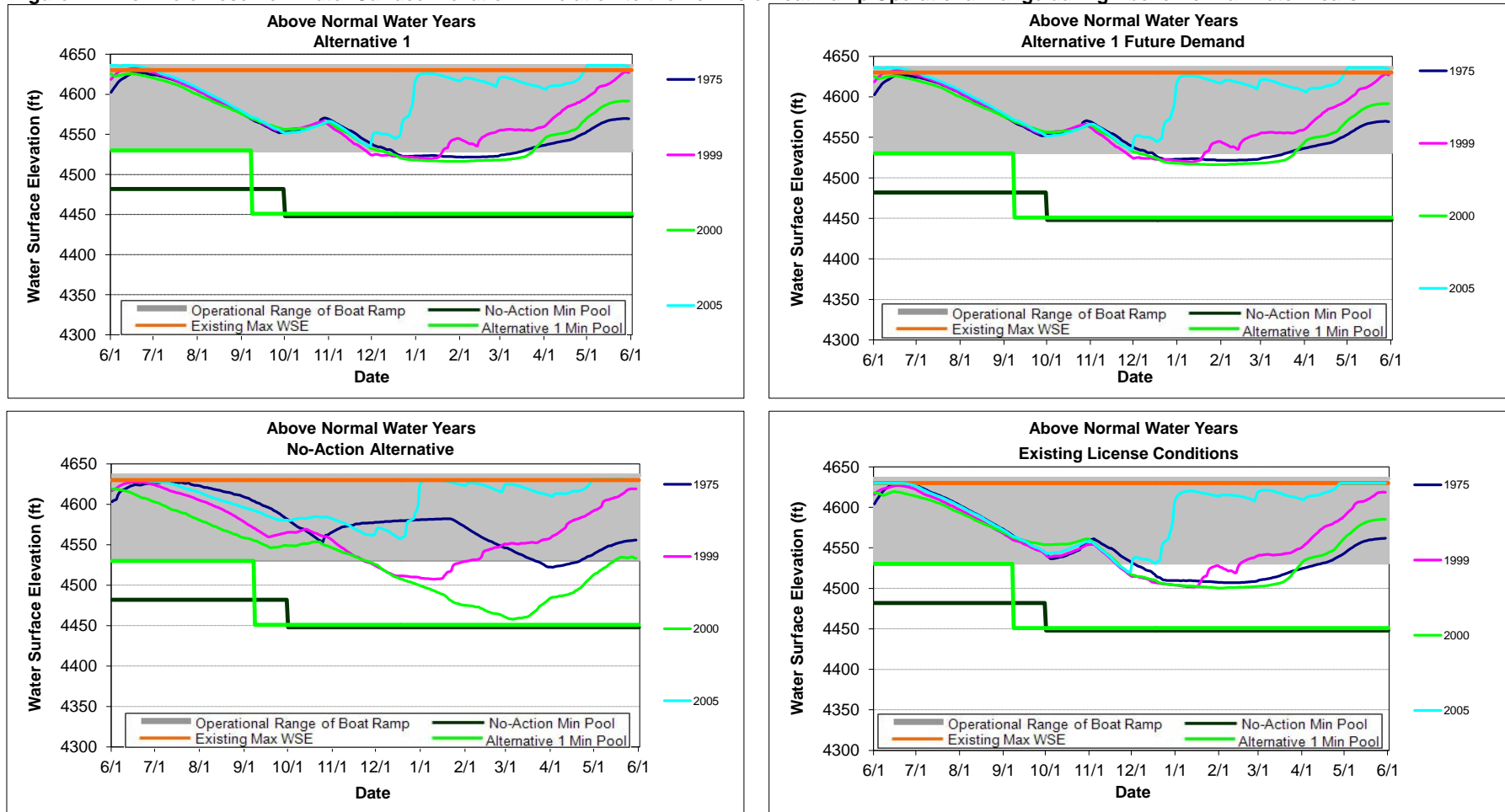


Figure D-3. Hell Hole Reservoir Water Surface Elevation in Relation to the Hell Hole Boat Ramp Operational Range during Below Normal Water Years.

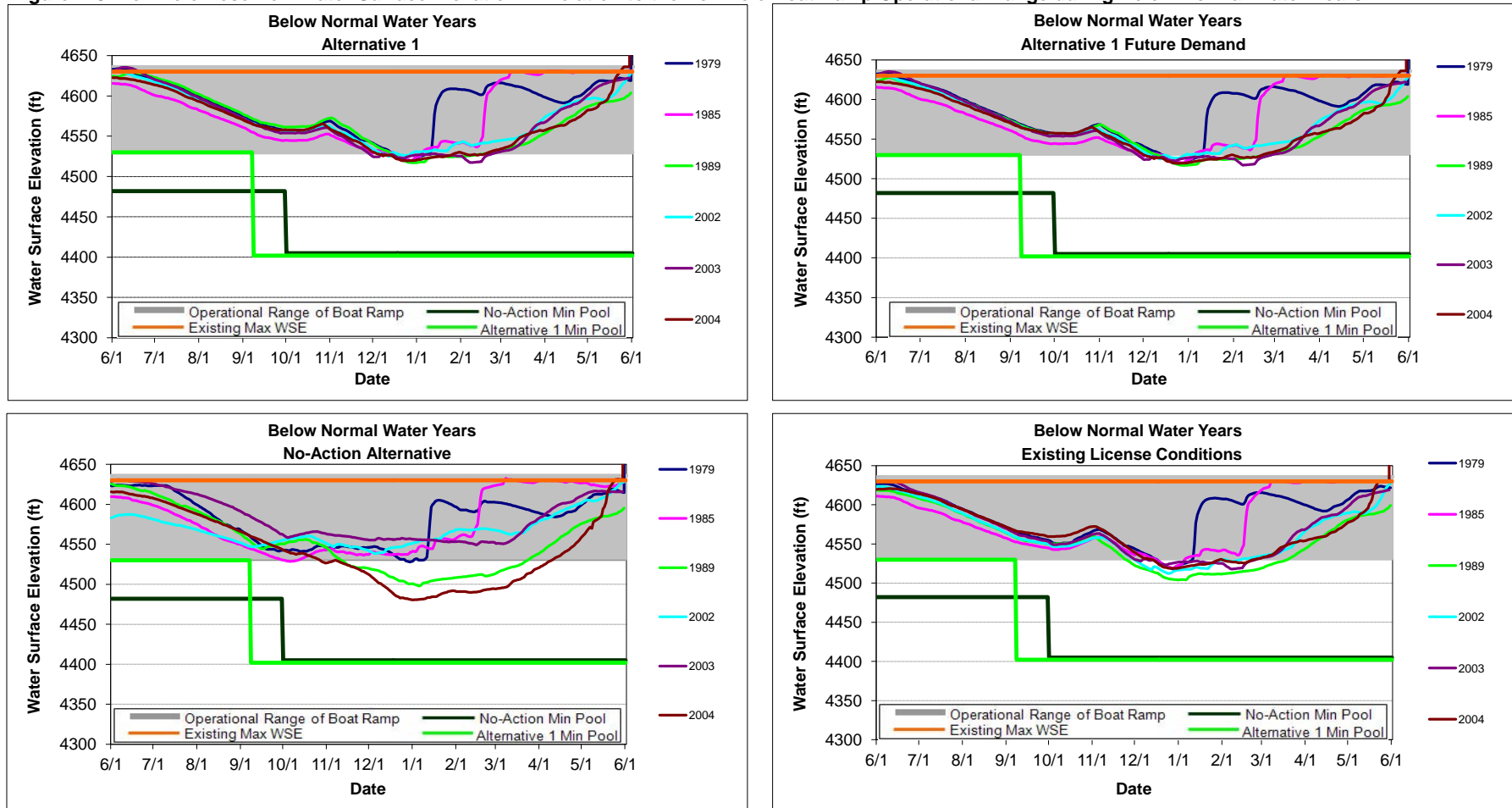


Figure D-4. Hell Hole Reservoir Water Surface Elevation in Relation to the Hell Hole Boat Ramp Operational Range during Dry Water Years.

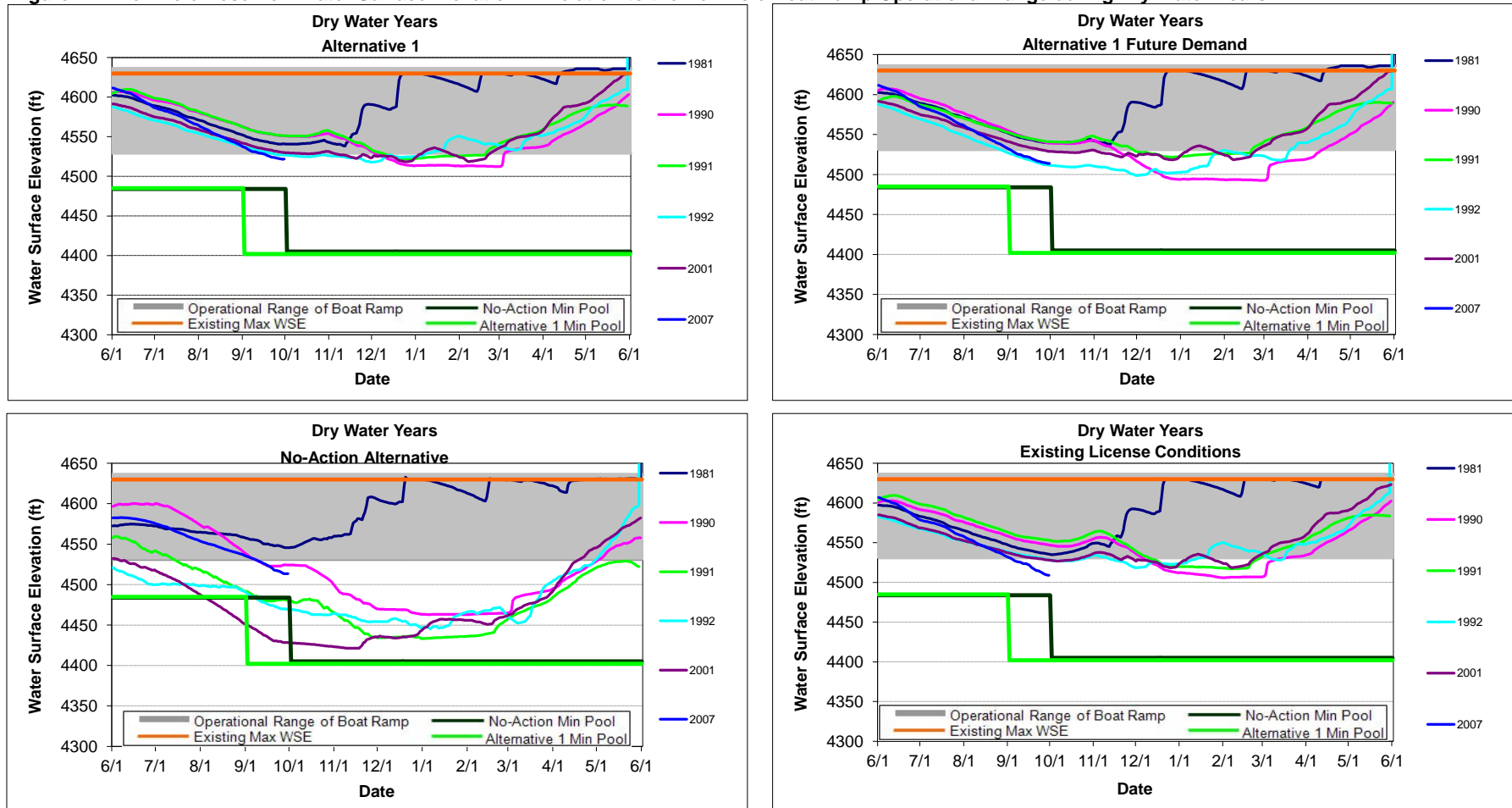


Figure D-5. Hell Hole Reservoir Water Surface Elevation in Relation to the Hell Hole Boat Ramp Operational Range during Critical Water Years.

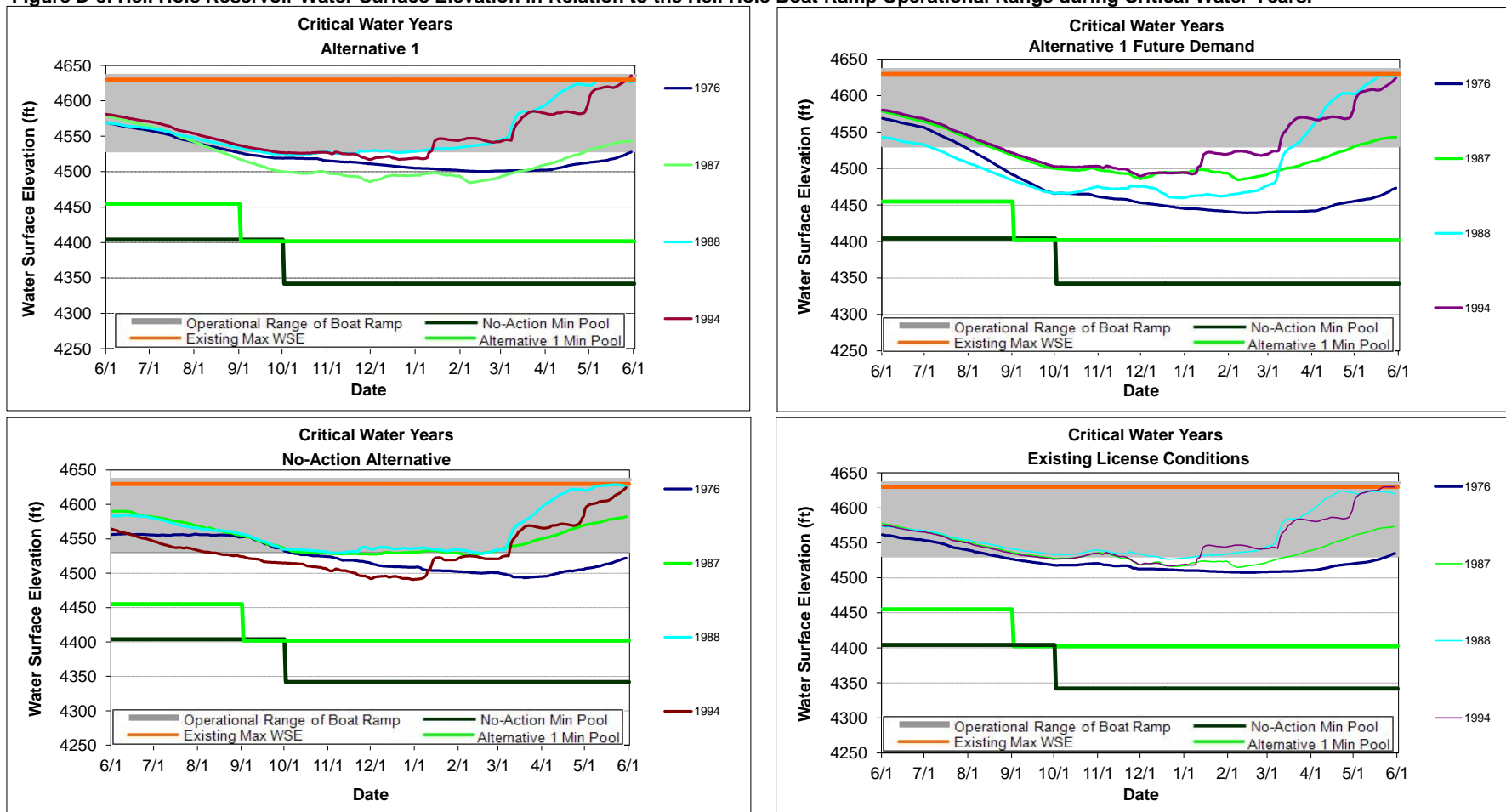


Figure D-6. Hell Hole Reservoir Water Surface Elevation in Relation to the Hell Hole Boat Ramp Operational Range during Extreme Critical Water Years.

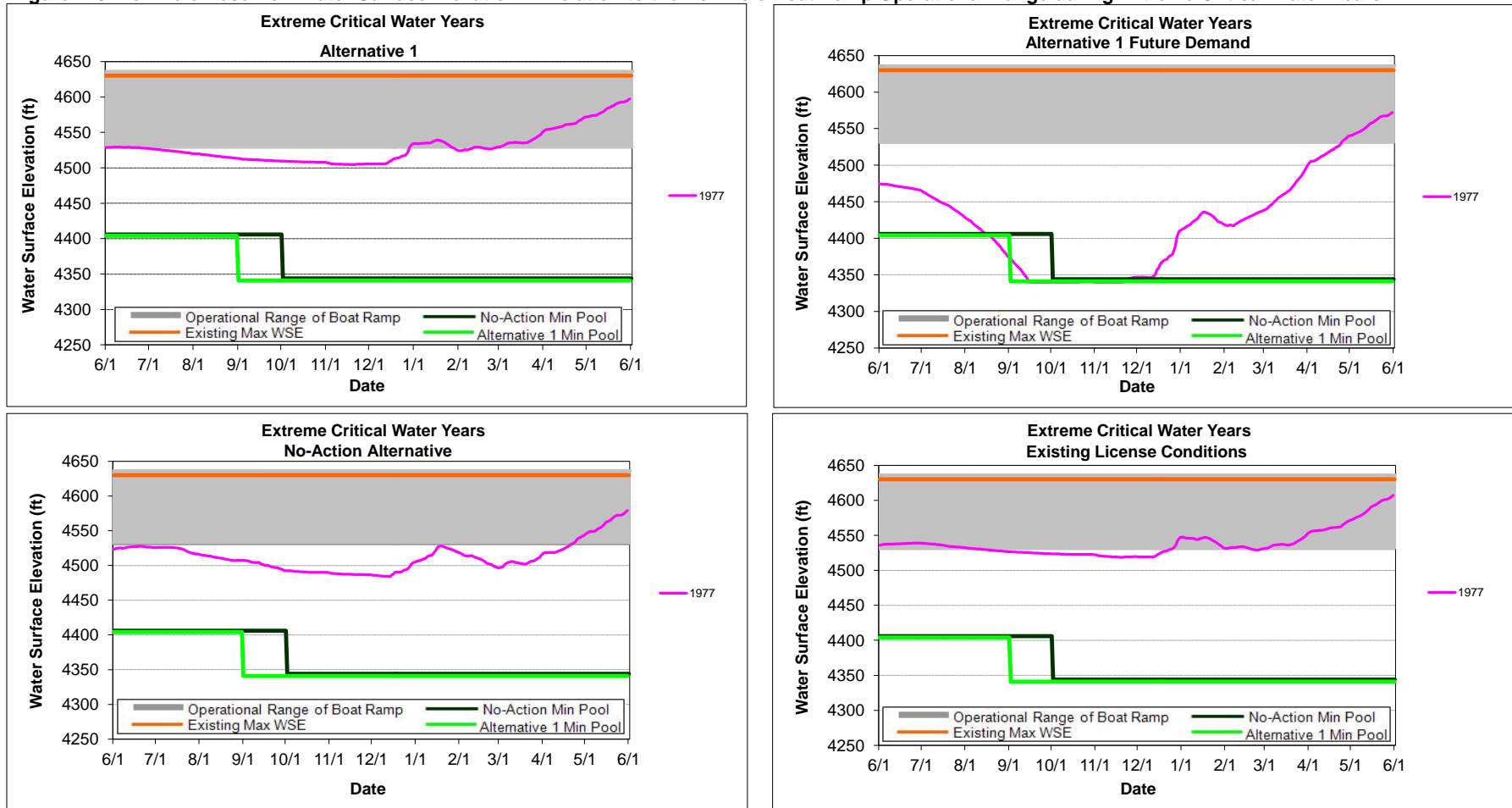


Figure D-7. French Meadows Reservoir Water Surface Elevation in Relation to the French Meadows Boat Ramp Operational Range during Wet Water Years.

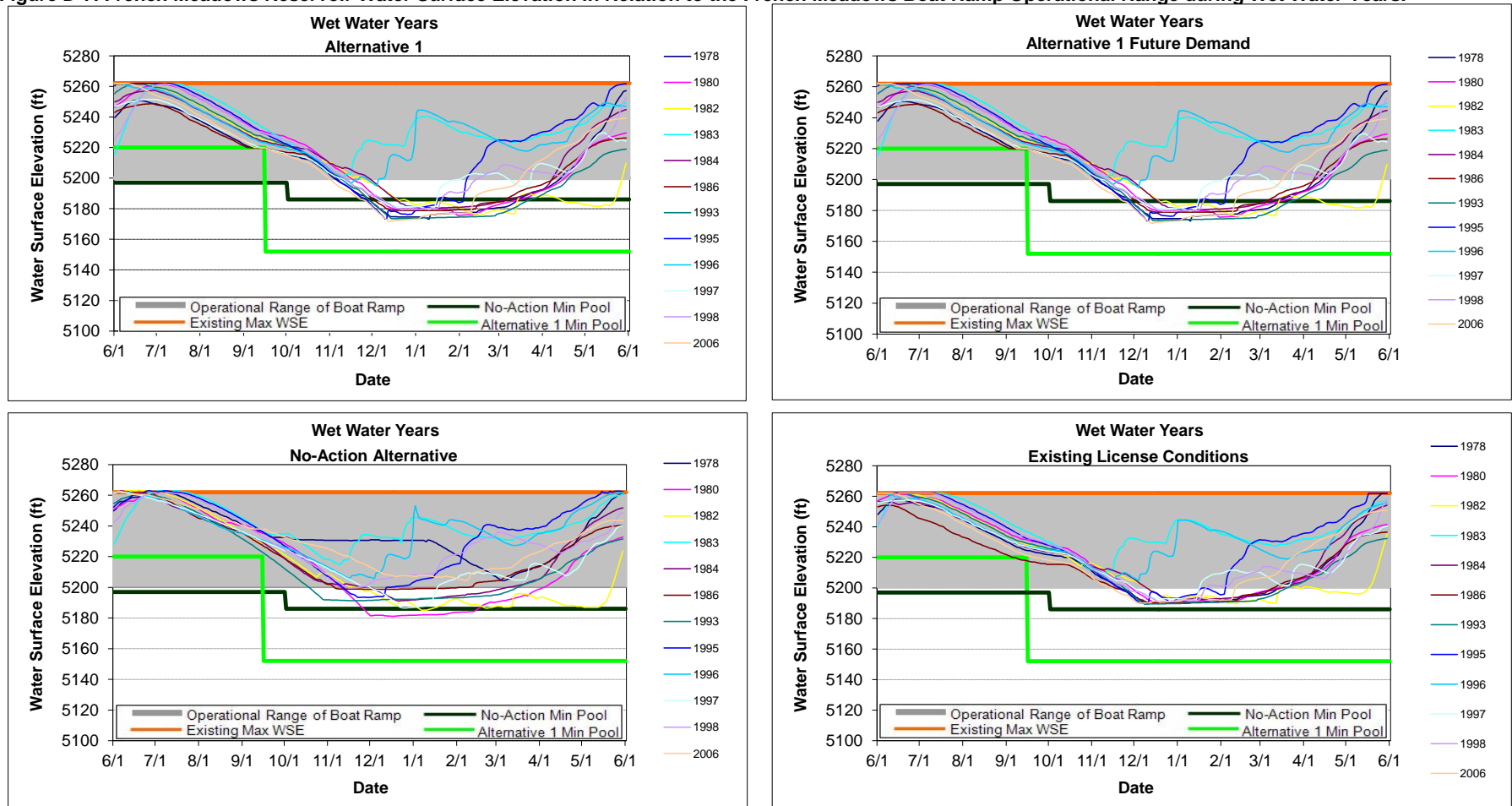


Figure D-8. French Meadows Reservoir Water Surface Elevation in Relation to the French Meadows Boat Ramp Operational Range during Above Normal Water Years.

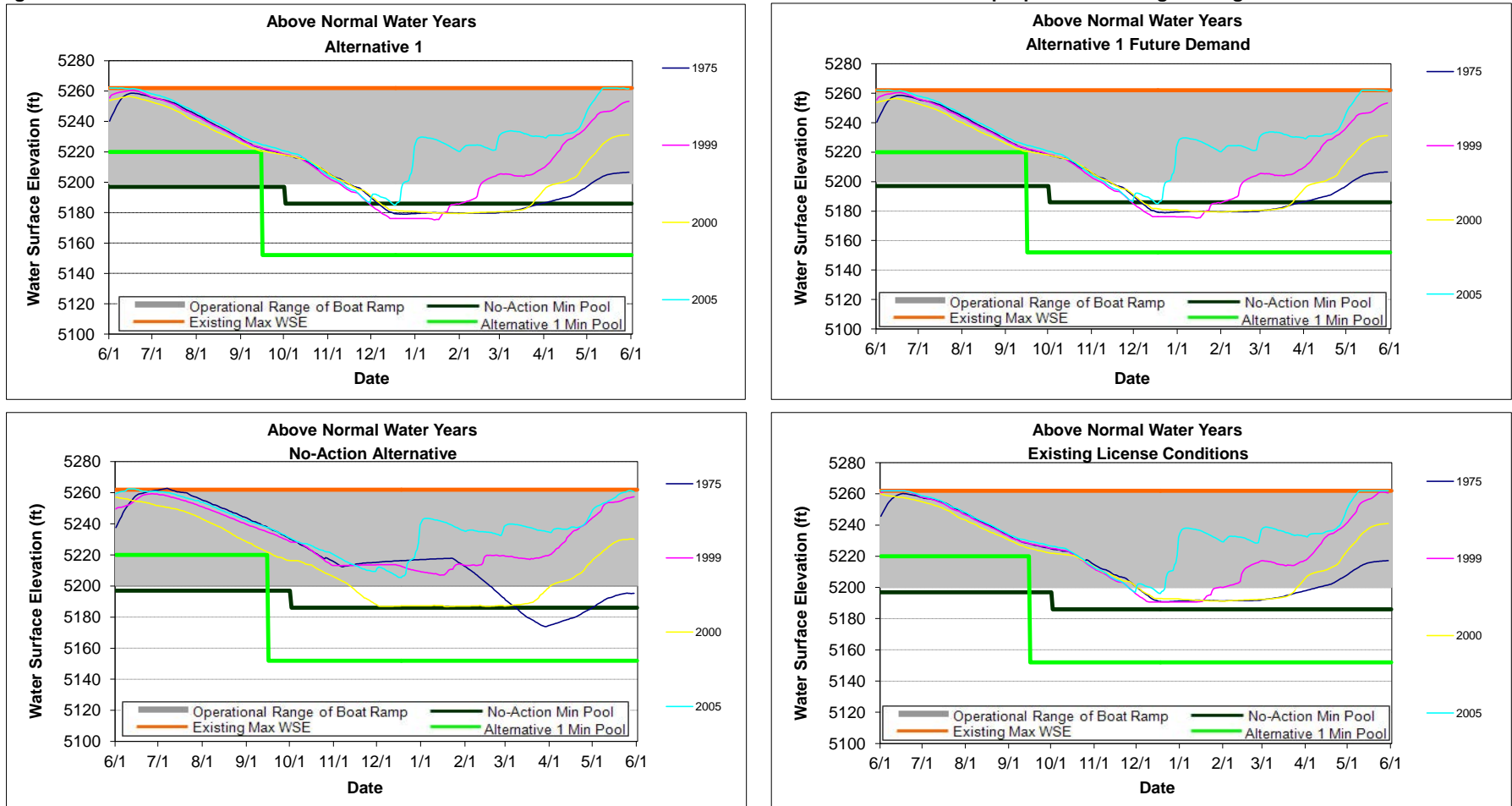


Figure D-9. French Meadows Reservoir Water Surface Elevation in Relation to the French Meadows Boat Ramp Operational Range during Below Normal Water Years.

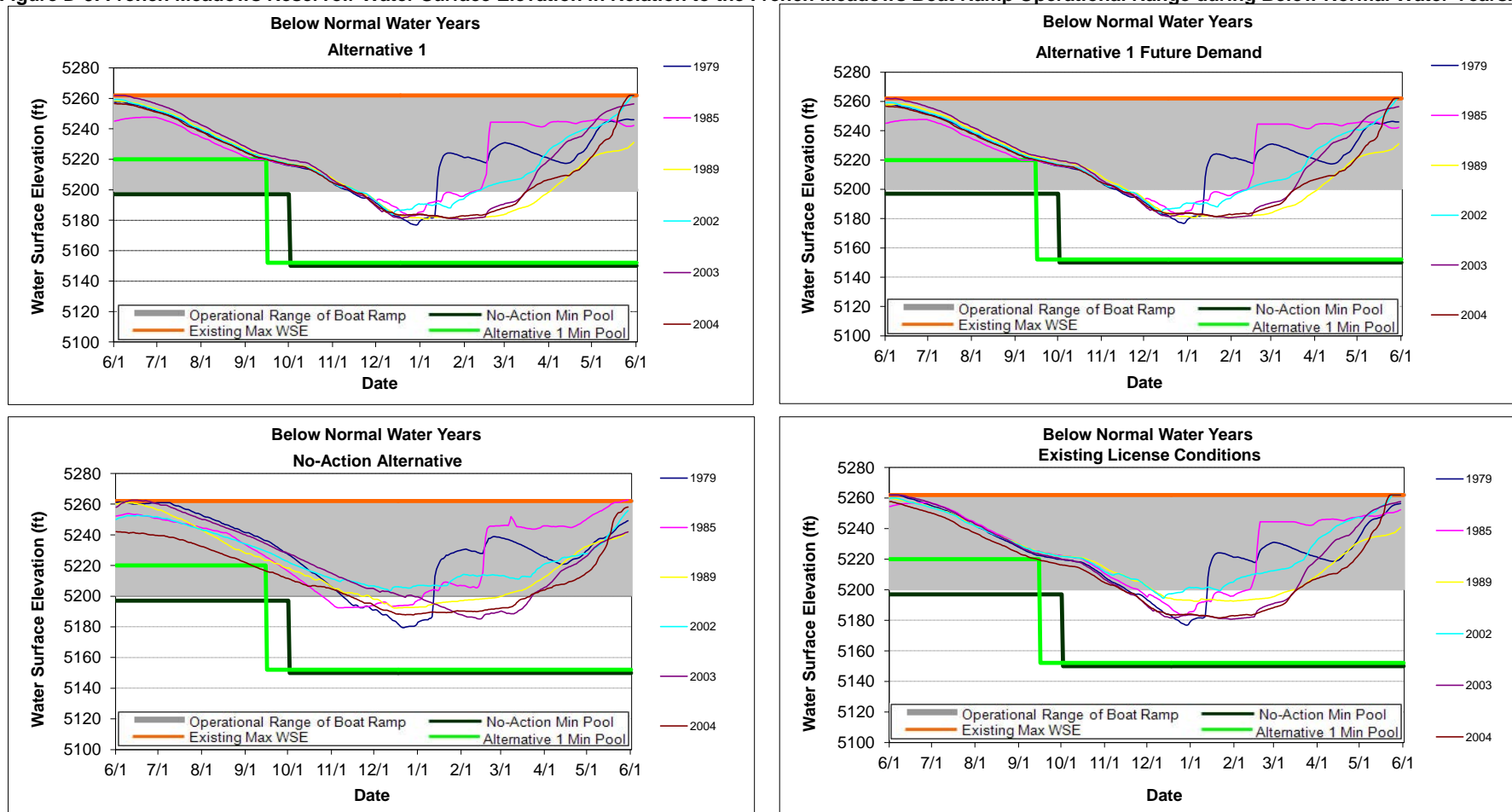


Figure D-10. French Meadows Reservoir Water Surface Elevation in Relation to the French Meadows Boat Ramp Operational Range during Dry Water Years.

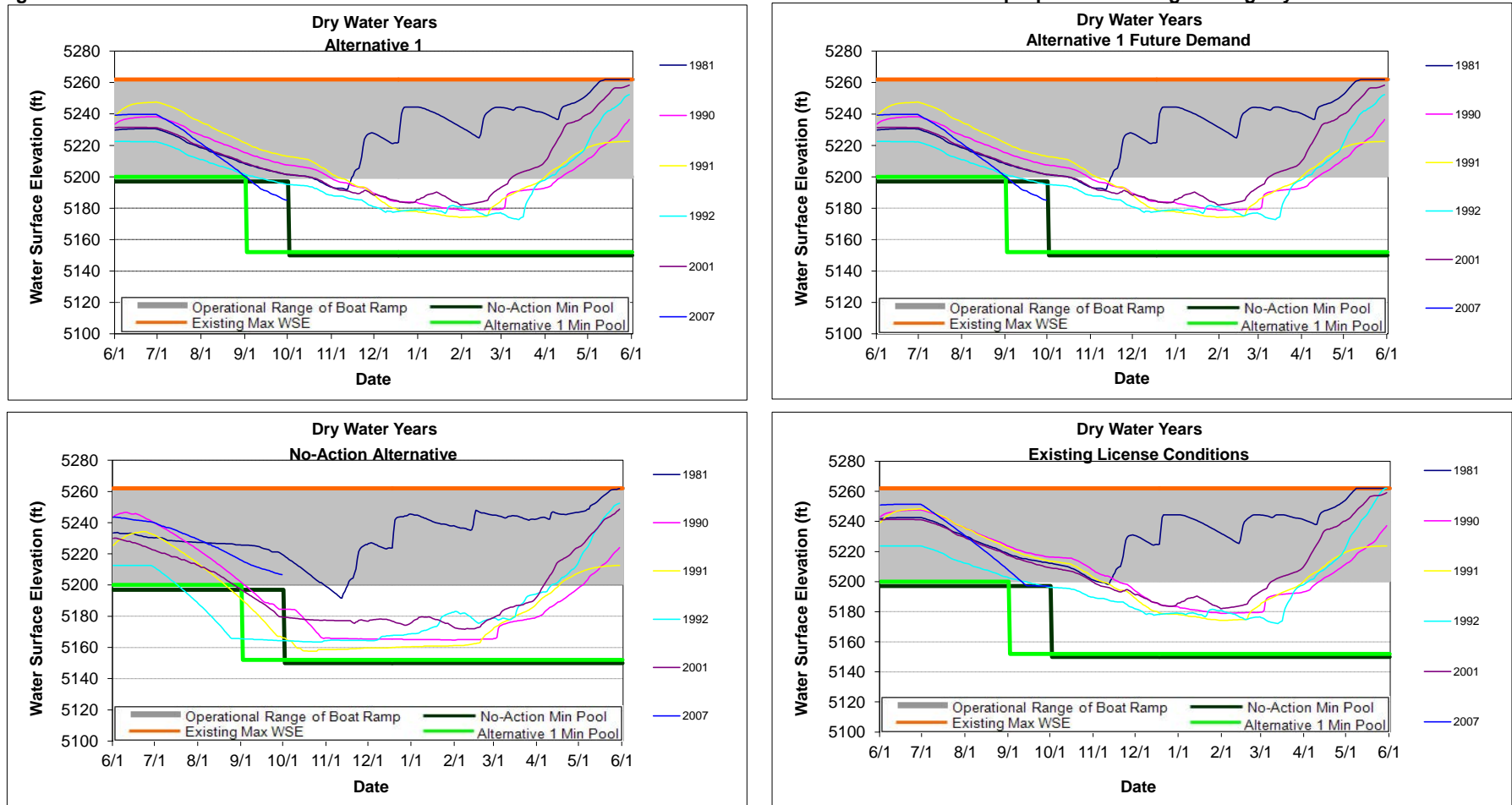


Figure D-11. French Meadows Reservoir Water Surface Elevation in Relation to the French Meadows Boat Ramp Operational Range during Critical Water Years.

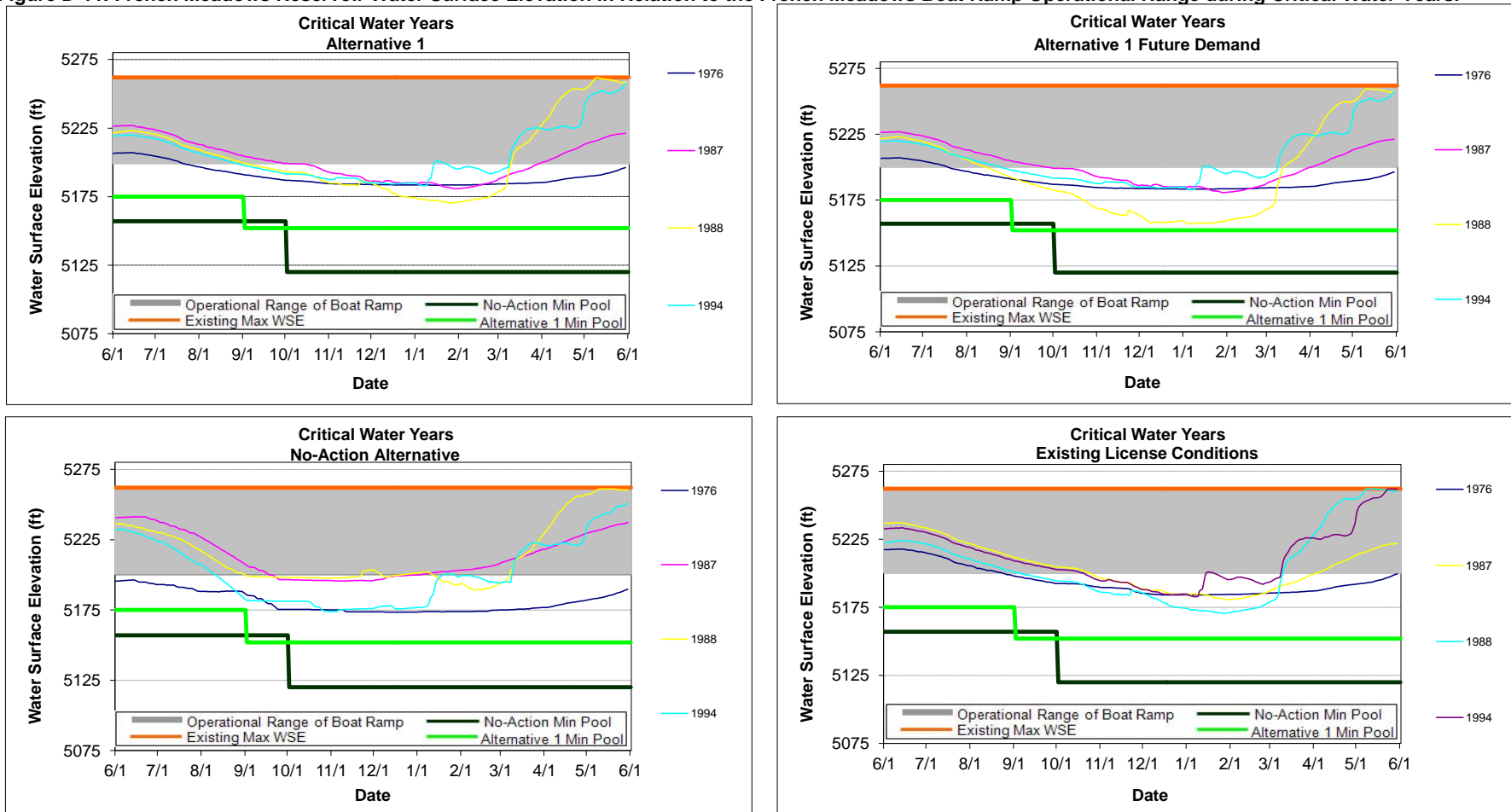


Figure D-12. French Meadows Reservoir Water Surface Elevation in Relation to the French Meadows Boat Ramp Operational Range during Extreme Critical Water Years.

