

**Vegetation Density**

- Barren (0 to 10% canopy cover)
- Sparse (11 to 24% canopy cover)
- Open (25 to 39% canopy cover)
- Moderate (50 to 59% canopy cover)
- Dense (60 to 80% canopy cover)
- Extremely Dense (>80% canopy cover)

**PCWA Facilities and Features**

- Dam
- Ancillary and Other Facilities
- Powerhouse
- Gage
- Penstock
- Tunnel
- Pipeline
- Gate
- Access Point
- Public Safety Fence
- FERC Boundary

**Project Power and Communication Lines:**

- Communication
- Power
- Power (underground)
- Communication/Power
- Communication/Power (underground)

**Transportation**

- Non-Project General Access Road
- Project Road
- Project Trail
- Recreation Access Road
- Other Road

**Project Recreation Facilities**

- Picnic Area
- Boat Ramp
- Scenic Viewpoint
- Developed Campground
- Water Supply Line

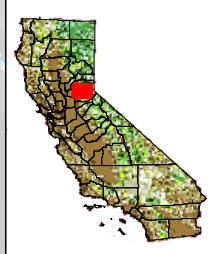
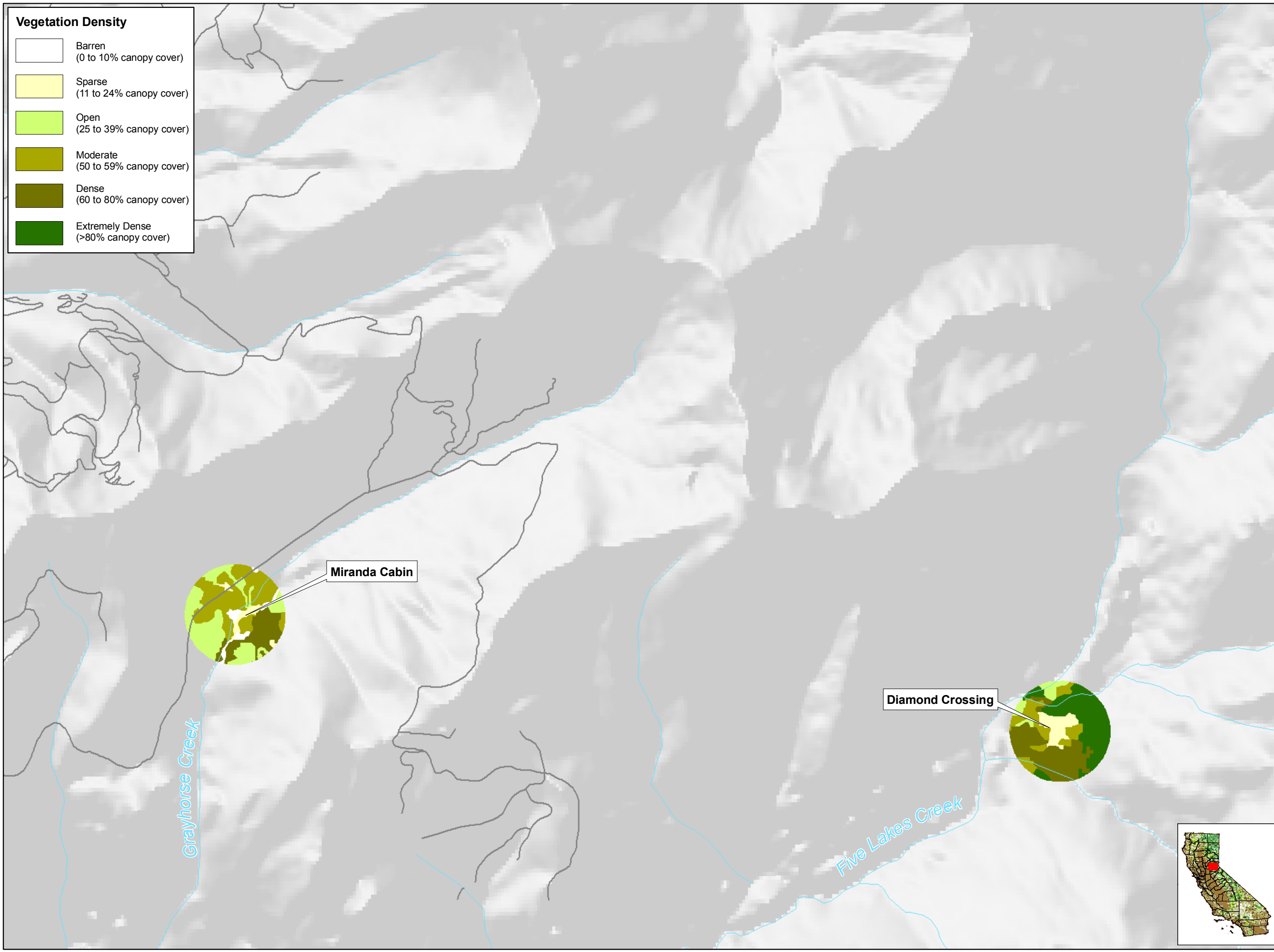
**Other Facilities**

PG & E Transmission Lines:

- 230 kV
- 60 kV

**Fire History**

- Areas Burned Since 2000



**PCWA**

Placer County Water Agency  
Middle Fork American River Project

**Map 3j**

**Vegetation Densities within the TERR-1 Study Area**  
Southern Snow Courses

0 0.25 0.5 Miles

Projection: Ca. Stateplane, Zone 2  
Datum: NAD 83

Date: 1/16/08