

### PCWA Facilities and Features

- Dam
- Ancillary and Other Facilities
- Powerhouse
- Gage
- Penstock
- Tunnel
- Pipeline
- Gate
- Access Point
- Public Safety Fence
- FERC Boundary
- Water Supply Line (above ground)
- Water Supply Line (buried)
- Project Power and Communication Lines:
  - Communication
  - Power
  - Power (underground)
  - Communication/Power
  - Communication/Power (underground)

### Land Jurisdictions / Ownership\*

- Eldorado National Forest
- Tahoe National Forest
- PCWA
- Lone Star Timber
- Sierra Pacific Industries\*\*
- Other Private (Blank)

\*\* Includes former properties of R.H. Emmerson & Son, LLC

\* PARCEL DATA SOURCES:  
Placer County, July 2006, El Dorado County, February 2007, USFS Region 5, February 2009.  
Some data has been modified to account for known errors and is to be used for general planning purposes only.

### Transportation

- Non-Project General Access Road
- Project Road
- Project Trail
- Recreation Access Road
- Recreation Water Supply Facility Access Road or Trail
- Other Road

### Project Recreation Facilities

- Picnic Area
- Boat Ramp
- Scenic Viewpoint
- Developed Campground
- Recreation Facility Footprints

### Other Facilities

PG & E Transmission Lines:

- 230 kV
- 60 kV

### Potential Betterments Features\*

- Construction Staging or Work Areas
- Temporary Road Associated with Potential Project Betterments
- Permanent Road Associated with Potential Project Betterments

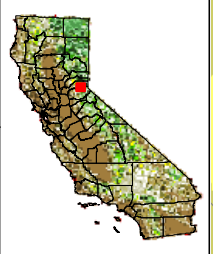
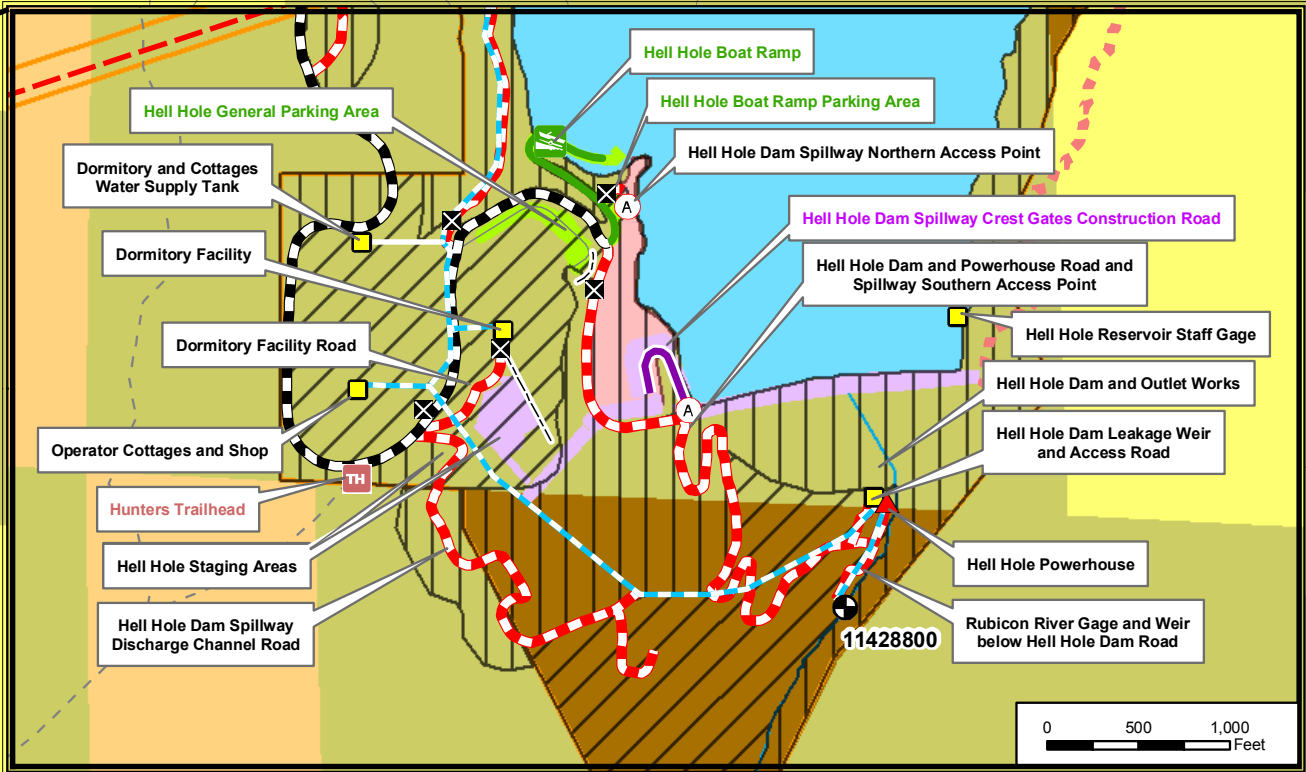
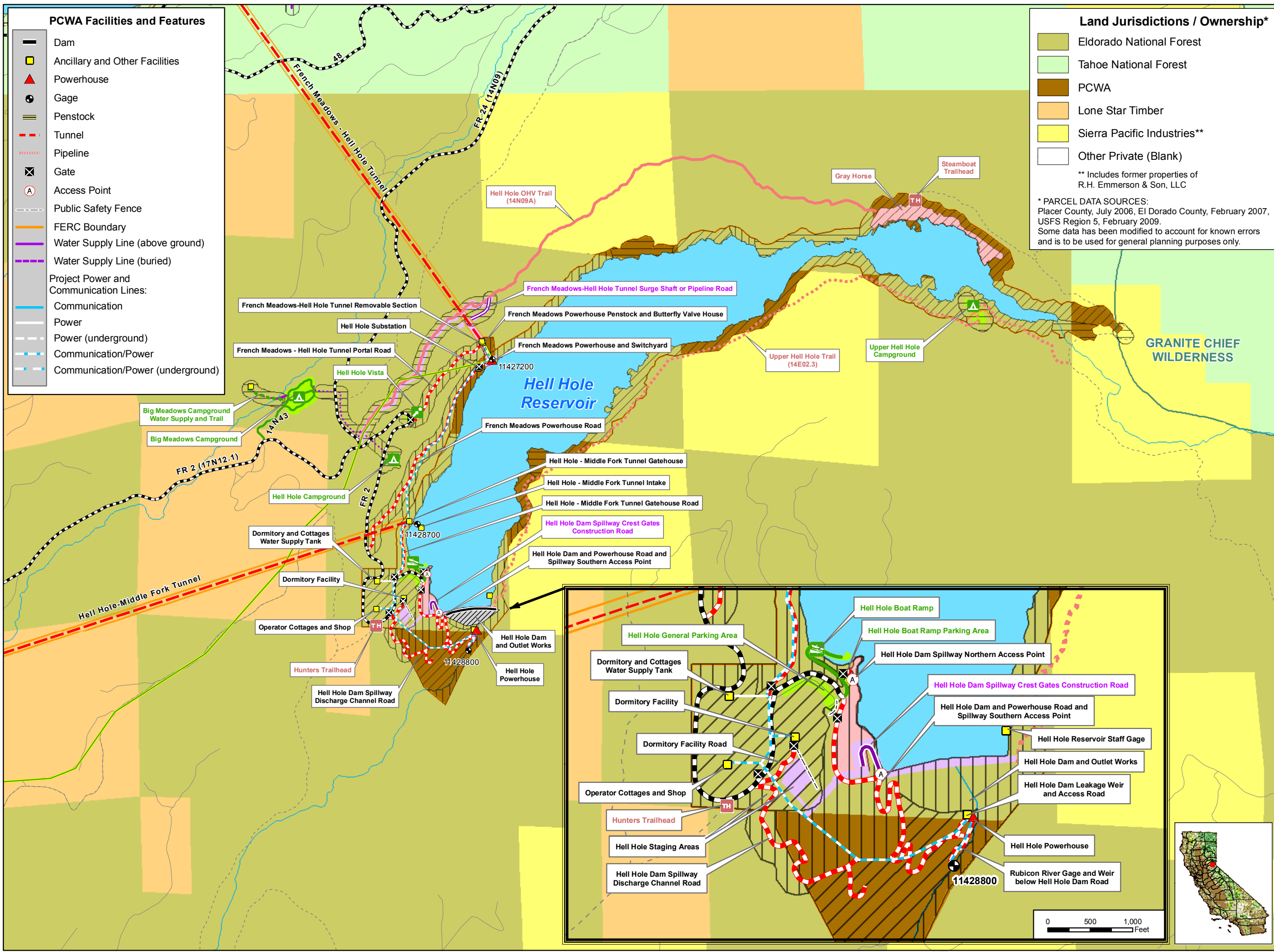
\* The proposed Project betterments are currently under review. The final configuration will be provided to the stakeholders and included in the Final Technical Study Plans

### Facilities and Dispersed Recreation Areas Identified by Stakeholders

- Recreation Access OHV Road
- Recreation Access Trail
- Trailhead
- Dispersed Concentrated Use Area
- Parking Area

### Archaeological Survey Methods

- Visual Reconnaissance
- Pedestrian Survey - Complete
- Pedestrian Survey - General
- Inaccessible Area



Placer County Water Agency  
Middle Fork American River Project  
**Map CUL 1-3**  
Cultural Resources Survey Area  
Showing Survey Methods and Jurisdictions  
Sheet 2 of 6  
Hell Hole Area

Date: 3/23/09

Projection: Ca. Stateplane, Zone 2  
Datum: NAD 83