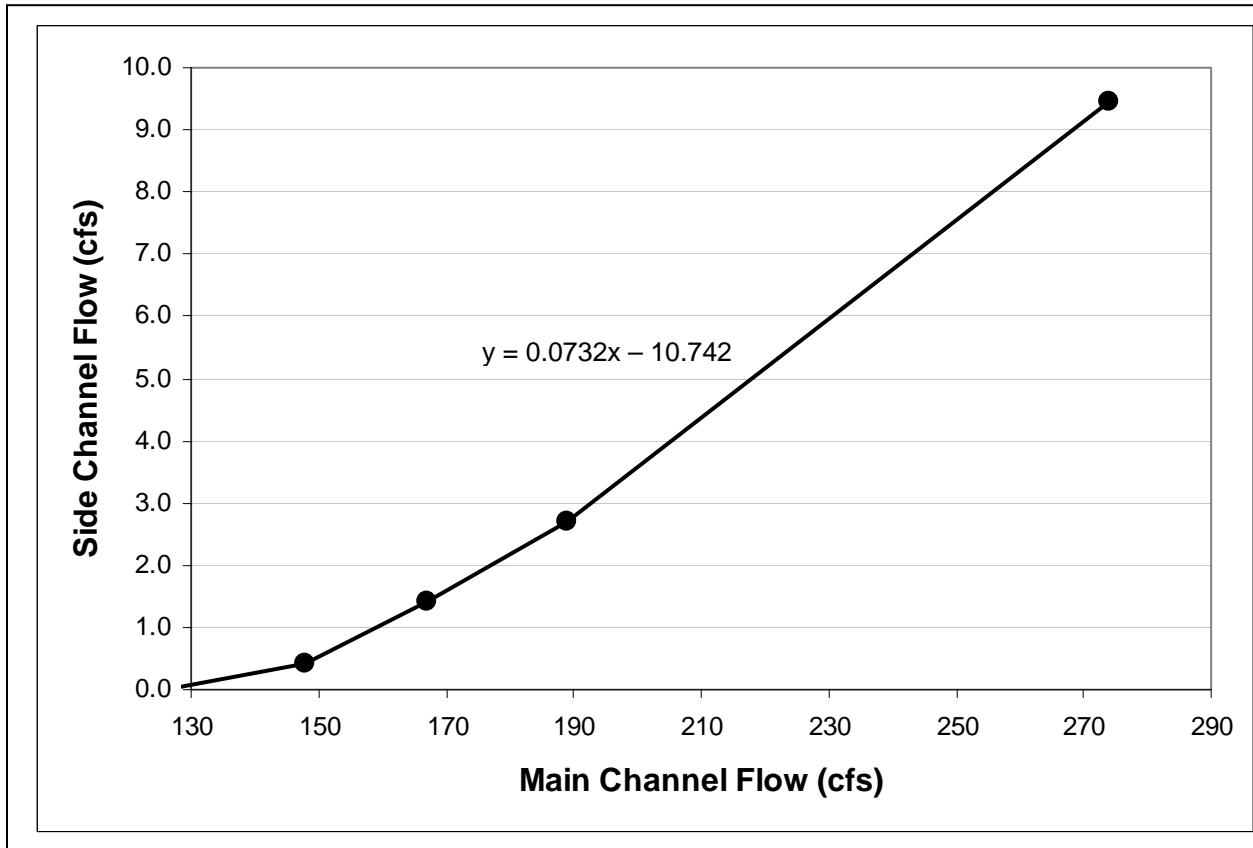


Figure F-2. Relationship between Middle Fork American River Mean Channel Flow and Side Channel Flow at Gray Eagle Bar.



Measurement Date	Main Channel Flow ¹ (cfs)	Side Channel Flow (cfs)
11/13/2008	274	9.5
11/13/2008	189	2.7
11/14/2008	167	1.4
11/17/2008	148	0.4
11/21/2008 ²	126	0 ³

¹ Flows within the Middle Fork American River main channel were measured at the Middle Fork American River Nr. Oxbow PH gage (OXB).

² At the lowest flow observed, discharge in the side channel was not measured. Field observation suggested flow into the side channel was essentially zero cfs.

³Subsurface flow likely but not measured during site visits.

Figure F-3. Comparison of the Total (a) and Average (b) Number of Days by Month (1975 – 2003) that Flow within the Middle Fork American River was Less Than 150 cfs for Impaired and Unimpaired Flows.

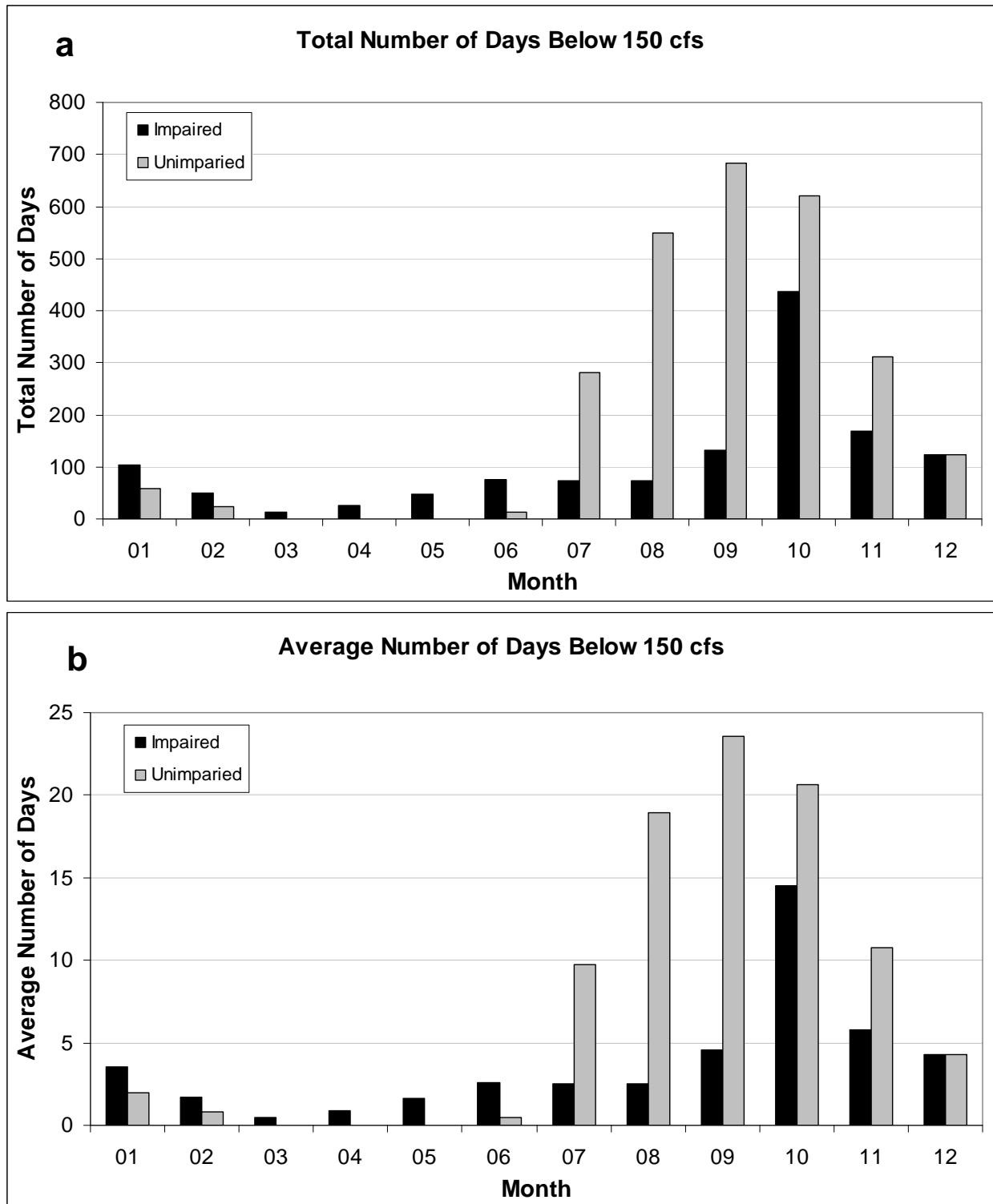
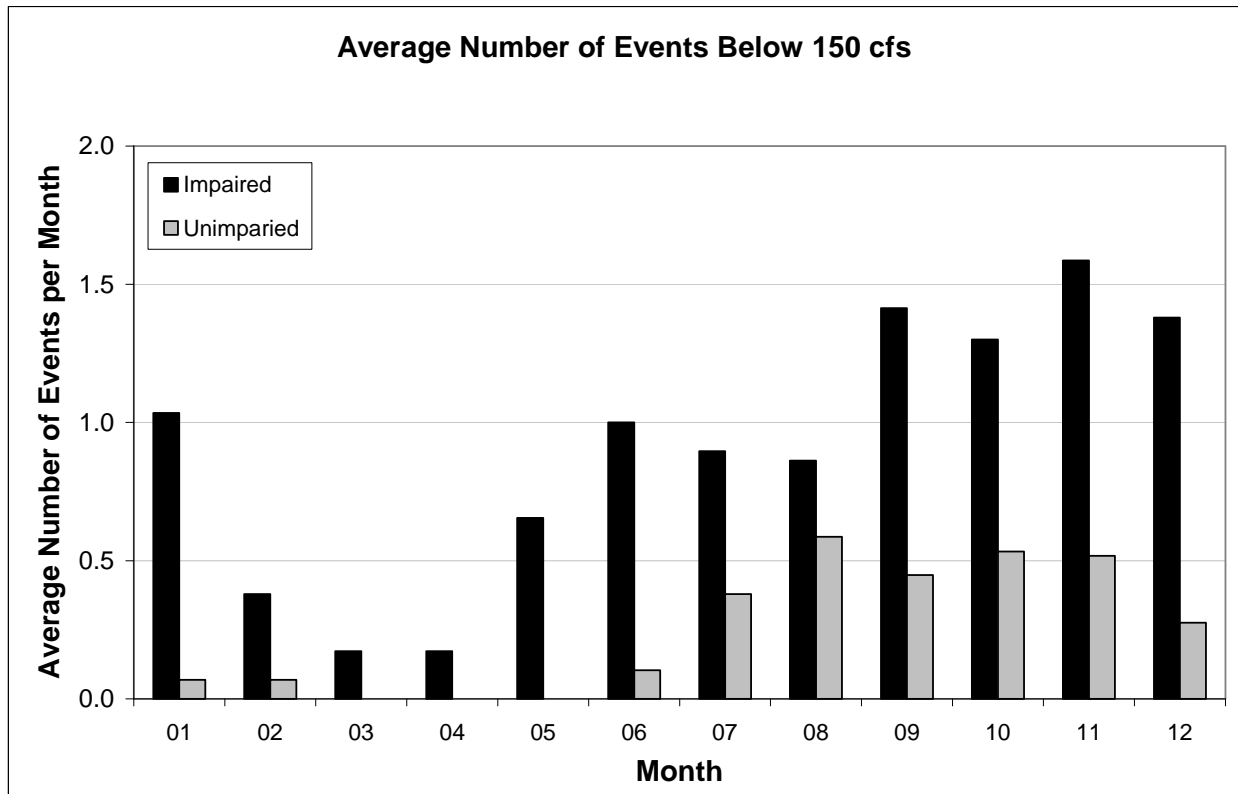


Figure F-4. Average Number of Events¹ by Month (1975 – 2003) that Flow within the Middle Fork American River was Less Than 150 cfs for Impaired and Unimpaired Flows.



¹ Multiple continuous days equals one event.