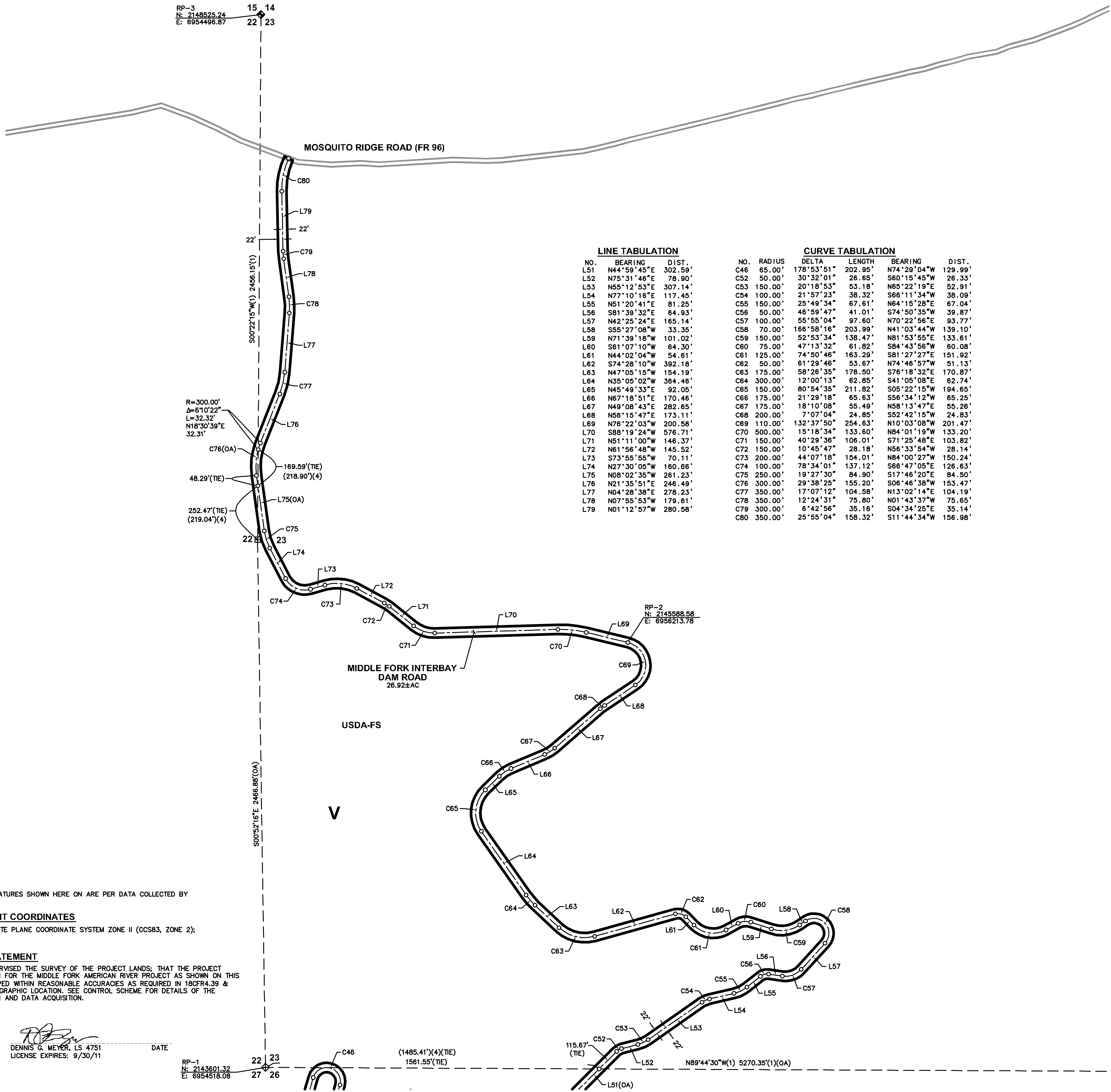


RP-3  
N: 2148525.24  
E: 6954496.87

15 14  
22 23



**LINE TABULATION**

NO.	BEARING	DIST.
L51	N44°59'45"E	302.59'
L52	N75°31'48"E	78.90'
L53	N55°12'53"E	307.14'
L54	N77°10'18"E	117.45'
L55	N51°20'41"E	81.25'
L56	S81°39'32"E	64.93'
L57	N42°25'24"E	165.14'
L58	S55°27'08"W	33.35'
L59	N71°39'18"W	101.02'
L60	S61°07'10"W	64.30'
L61	N44°02'04"W	54.61'
L62	S74°28'10"W	392.18'
L63	N47°05'15"W	154.19'
L64	N35°05'02"W	364.46'
L65	N45°49'33"E	92.05'
L66	N67°18'51"E	170.46'
L67	N49°08'43"E	282.65'
L68	N56°15'47"E	173.11'
L69	N76°22'03"W	200.58'
L70	S68°19'24"W	576.71'
L71	N51°11'00"W	146.37'
L72	N61°56'48"W	145.52'
L73	S73°55'55"W	70.11'
L74	N27°30'05"W	160.66'
L75	N08°02'35"W	261.23'
L76	N21°35'51"E	246.49'
L77	N04°28'38"E	278.23'
L78	N07°55'53"W	179.61'
L79	N01°12'57"W	280.58'

**CURVE TABULATION**

NO.	RADIUS	DELTA	LENGTH	BEARING	DIST.
C46	65.00'	178°53'51"	202.95'	N74°29'04"W	129.99'
C52	50.00'	30°32'01"	26.85'	S60°15'45"W	26.33'
C53	150.00'	20°18'53"	53.18'	N65°22'19"E	52.91'
C54	100.00'	21°57'23"	38.32'	S66°11'34"W	38.09'
C55	150.00'	25°49'34"	67.61'	N64°15'28"E	67.04'
C56	50.00'	46°59'47"	41.01'	S74°50'35"W	39.87'
C57	100.00'	55°55'04"	97.60'	N70°22'56"E	93.77'
C58	70.00'	166°58'16"	203.99'	N41°03'44"W	139.10'
C59	150.00'	52°53'34"	138.47'	N81°53'55"E	133.61'
C60	75.00'	47°13'32"	61.82'	S84°43'56"W	60.08'
C61	125.00'	74°50'46"	163.29'	S81°27'27"E	151.92'
C62	50.00'	61°29'46"	53.67'	N74°46'57"W	51.13'
C63	175.00'	58°26'35"	178.50'	S76°18'32"E	170.87'
C64	300.00'	12°00'13"	62.85'	S41°05'08"E	62.74'
C65	150.00'	80°54'35"	211.82'	S05°22'15"W	194.65'
C66	175.00'	21°28'18"	65.63'	S56°34'12"W	65.25'
C67	175.00'	18°10'08"	55.49'	N58°13'47"E	55.26'
C68	200.00'	7°07'04"	24.85'	S52°42'15"W	24.83'
C69	110.00'	132°37'50"	254.83'	N10°03'08"W	201.47'
C70	500.00'	15°18'34"	133.60'	N84°01'19"W	133.20'
C71	150.00'	40°29'36"	108.01'	S71°25'48"E	103.82'
C72	150.00'	10°45'47"	28.18'	N56°33'54"W	28.14'
C73	200.00'	44°07'18"	154.01'	N84°00'27"W	150.24'
C74	100.00'	78°34'01"	137.12'	S66°47'05"E	126.63'
C75	250.00'	19°27'30"	84.90'	S17°46'20"E	84.50'
C76	300.00'	29°38'25"	155.20'	S06°46'38"W	153.47'
C77	350.00'	17°07'12"	104.58'	N13°02'14"E	104.19'
C78	350.00'	12°24'31"	75.80'	N01°43'37"W	75.65'
C79	300.00'	6°42'56"	35.16'	S04°34'25"E	35.14'
C80	350.00'	25°55'04"	158.32'	S11°44'34"W	156.98'

R=300.00'  
Δ=61°0'22"  
L=32.32'  
N18°30'39"E  
32.31'

48.29'(TIE)  
169.59'(TIE)  
(218.90')(4)  
252.47'(TIE)  
(219.04')(4)

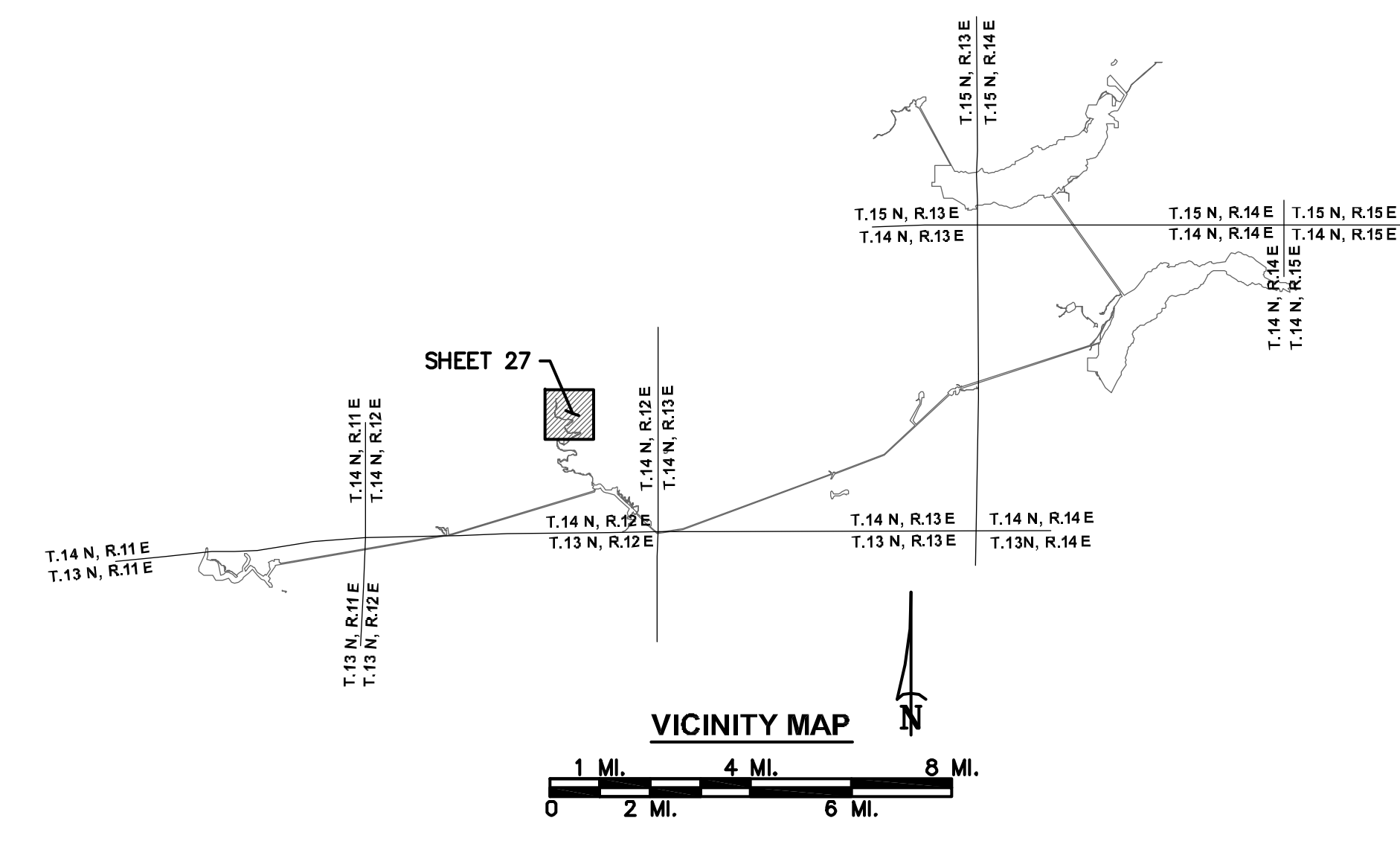
S00°22'15"W(1) 2456.15'(1)  
S00°32'16"E 2466.88(OA)

RP-1  
N: 2143601.32  
E: 6954518.08

(1485.41')(4)(TIE)  
1561.55'(TIE)

115.67'  
(TIE)

N89°44'30"W(1) 5270.35'(1)(OA)



**LEGEND**

- PROJECT BOUNDARY
- RESERVOIR STORAGE STAGE
- TUNNEL (WITH SHAFT)
- SECTION LINE, ESTABLISHED
- SECTION LINE, PROTRACTED
- SUBDIVISION LINE, GOVERNMENT LAND SURVEY
- SECTION CORNER, FOUND
- SECTION CORNER, RECORD
- 1/4 CORNER, FOUND
- 1/4 CORNER, RECORD
- COUNTY LINE
- U.S. FOREST BOUNDARY
- PROJECT BOUNDARY CORNER
- (OA) OVERALL DIMENSION
- RP REFERENCE POINT
- V PUBLIC LAND
- ROAD
- BRIDGE
- RIVER OR PERENNIAL STREAM
- INTERMITTENT STREAM
- SPRING
- POND OR LAKE, WATER LEVEL JULY 1961
- TREES OR BRUSH
- STREAM FLOW GAGING STATION
- WATER SURFACE GAGING STATION
- CAMPGROUND
- BUILDING
- GOVERNMENT BENCH MARK
- BENCH MARK RELOCATION
- PHOTOGRAMMETRIC PRINCIPAL POINT
- TRIANGULATION STATION
- FIELD ESTABLISHED ELEVATION
- PHOTOGRAMMETRIC ELEVATION
- MINERAL RIGHTS ONLY
- (1) RECORD PER 2 ROS 78
- (2) RECORD PER 9 ROS 126
- (3) RECORD PER 13 ROS 157
- (4) RECORD PER 3 ROS 78

**NOTES**  
ALL FACILITIES AND FEATURES SHOWN HERE ON ARE PER DATA COLLECTED BY OTHERS.

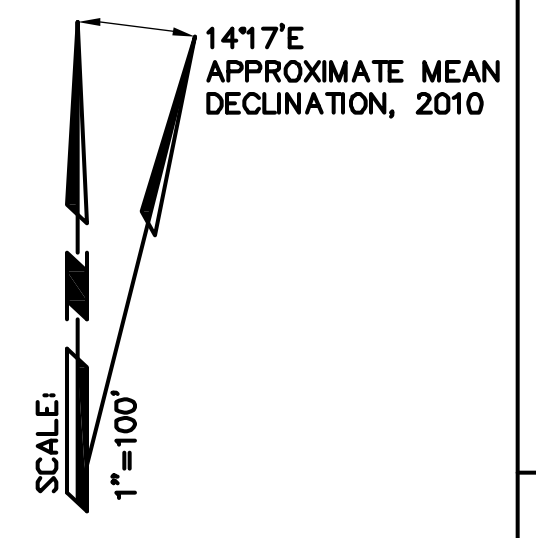
**REFERENCE POINT COORDINATES**  
NAD83 CALIFORNIA STATE PLANE COORDINATE SYSTEM ZONE II (CCS83, ZONE 2);  
U.S. SURVEY FEET

**SURVEYOR'S STATEMENT**  
I CERTIFY THAT I SUPERVISED THE SURVEY OF THE PROJECT LANDS; THAT THE PROJECT BOUNDARY DELINEATION FOR THE MIDDLE FORK AMERICAN RIVER PROJECT AS SHOWN ON THIS EXHIBIT 'G' IS DEVELOPED WITHIN REASONABLE ACCURACIES AS REQUIRED IN 18CFR4.39 & 18CFR4.41 TO THE GEOGRAPHIC LOCATION. SEE CONTROL SCHEME FOR DETAILS OF THE BOUNDARY DELINEATION AND DATA ACQUISITION.

ANDREGG GEOMATICS

DENNIS G. MEYER, LS 4751  
LICENSE EXPIRES: 9/30/11

DATE



**EXHIBIT 'G' PROJECT 2079**  
**MIDDLE FORK AMERICAN RIVER PROJECT**  
**MIDDLE FORK INTERBAY DAM ROAD**  
A PORTION OF SECTIONS 22, 23 & 26, T.14 N., R.12 E., M.D.M.  
PLACER COUNTY, CALIFORNIA  
SCALE: 1"=200' FEBRUARY 11, 2011

ANDREGG  
GEOMATICS  
808-809-7072

50 100 200 400 600  
0 100 200 400 600

SHEET 27 OF 33