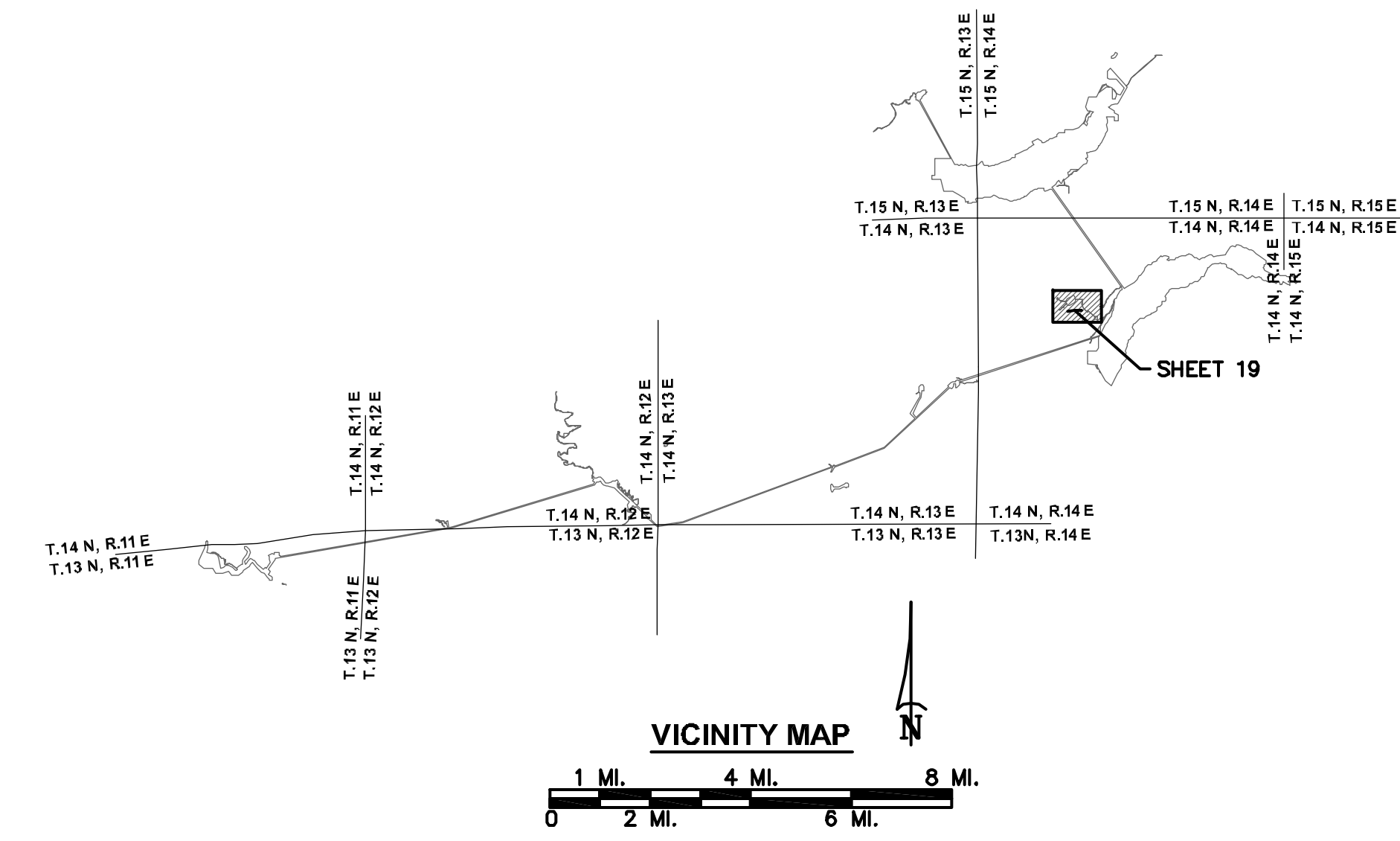


**CURVE TABULATION**

NO.	RADIUS	DELTA	LENGTH	BEARING	DIST
C3	50.00	39°14'00"	34.24'	N71°37'49"W	33.57'
C4	75.00	46°34'39"	60.97'	N75°18'08"W	59.30'
C5	200.00	27°07'09"	94.66'	N85°01'54"W	93.78'
C6	25.00	46°15'35"	20.18'	N85°23'53"E	19.64'
C7	12.50	73°11'25"	15.97'	N81°08'12"W	14.90'
C8	80.00	68°31'36"	95.68'	N83°44'30"W	90.08'
C9	35.00	44°31'23"	27.20'	N84°15'23"E	26.52'
C10	75.00	26°22'14"	34.52'	N60°17'48"W	34.22'
C11	35.00	43°40'43"	26.68'	N52°31'31"W	26.04'
C12	55.00	42°02'17"	40.35'	N51°42'19"W	39.45'
C13	25.00	66°21'26"	28.95'	N37°41'29"W	27.36'
C14	15.00	62°37'38"	16.40'	N26°48'04"E	15.59'
C15	80.00	04°56'14"	6.89'	N47°00'36"W	6.89'
C16	200.00	01°30'38"	6.89'	N83°25'37"E	5.27'
C17	125.00	25°19'04"	55.23'	N24°20'52"W	54.79'
C18	125.00	28°44'13"	62.69'	N51°22'31"W	62.04'
C19	50.00	59°11'45"	51.66'	S36°08'45"E	49.39'
C20	200.00	20°15'07"	70.89'	N16°40'26"W	70.33'
C21	125.00	52°07'48"	113.73'	S00°44'05"E	109.85'
C22	100.00	14°34'10"	25.43'	N18°02'44"E	25.36'

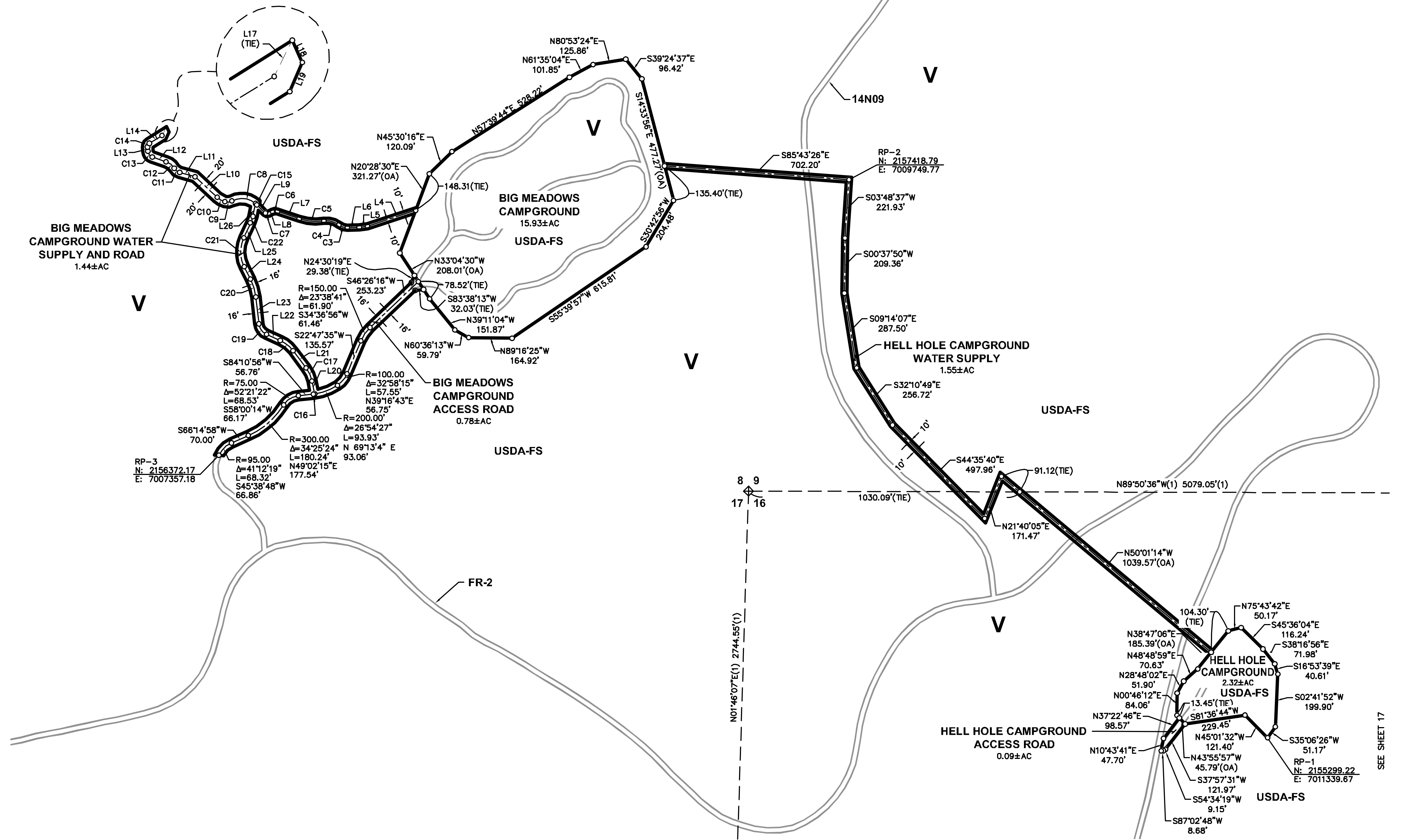
**LINE TABULATION**

NO.	BEARING	DIST
L4	N71°52'43"E	192.58'
L5	N81°19'55"E	31.94'
L6	N88°45'11"E	45.17'
L7	N71°28'19"W	87.40'
L8	N62°16'08"E	14.87'
L9	N44°32'29"W	44.08'
L10	N47°06'41"W	114.51'
L11	N74°21'53"W	60.42'
L12	N70°50'25"W	55.50'
L13	N04°30'46"W	16.31'
L14	N58°06'53"E	56.43'
L15	S31°53'07"E	24.50'
L16	S31°53'07"E	8.73'
L17	N28°39'48"E	58.33' (TIE)
L18	N24°26'38"W	19.82'
L19	N23°29'53"E	21.25'
L20	S11°41'20"E	50.27'
L21	S37°00'24"E	81.90'
L22	S65°44'37"E	57.10'
L23	S06°32'52"E	102.99'
L24	S28°37'59"E	52.97'
L25	S25°19'49"W	62.98'
L26	S10°45'39"W	49.85'



**LEGEND**

- PROJECT BOUNDARY
- RESERVOIR STORAGE STAGE
- TUNNEL (WITH SHAFT)
- SECTION LINE, ESTABLISHED
- SECTION LINE, PROTRACTED
- SUBDIVISION LINE, GOVERNMENT LAND SURVEY
- ◆ SECTION CORNER, FOUND
- ◆ SECTION CORNER, RECORD
- 1/4 CORNER, FOUND
- 1/4 CORNER, RECORD
- COUNTY LINE
- U.S. FOREST BOUNDARY
- PROJECT BOUNDARY CORNER
- (OA) OVERALL DIMENSION
- RP REFERENCE POINT
- V PUBLIC LAND
- ROAD
- BRIDGE
- RIVER OR PERENNIAL STREAM
- INTERMITTENT STREAM
- SPRING
- POND OR LAKE, WATER LEVEL JULY 1961
- TREES OR BRUSH
- STREAM FLOW GAGING STATION
- WATER SURFACE GAGING STATION
- CAMPGROUND
- BUILDING
- GOVERNMENT BENCH MARK
- BENCH MARK RELOCATION
- PHOTOGRAMMETRIC PRINCIPAL POINT
- TRIANGULATION STATION
- FIELD ESTABLISHED ELEVATION
- PHOTOGRAMMETRIC ELEVATION
- M R O MINERAL RIGHTS ONLY
- (1) RECORD PER 2 ROS 78



**SURVEYOR'S STATEMENT**

I CERTIFY THAT I SUPERVISED THE SURVEY OF THE PROJECT LANDS; THAT THE PROJECT BOUNDARY DELINEATION FOR THE MIDDLE FORK AMERICAN RIVER PROJECT AS SHOWN ON THIS EXHIBIT 'G' IS DEVELOPED WITHIN REASONABLE ACCURACIES AS REQUIRED IN 18CFR4.39 & 18CFR4.41 TO THE GEOGRAPHIC LOCATION. THIS EXHIBIT IS BASED UPON MAPS OF THE EXHIBIT 'K' OF THE MIDDLE FORK AMERICAN RIVER PROJECT NO.2079 AND BOOK 2 SURVEYS PAGE 78 OFFICIAL RECORDS OF PLACER COUNTY AND CORRECTLY SHOWN HEREON. SEE CONTROL SCHEME FOR DETAILS OF THE BOUNDARY DELINEATION AND DATA ACQUISITION.

ANDREGG GEOMATICS



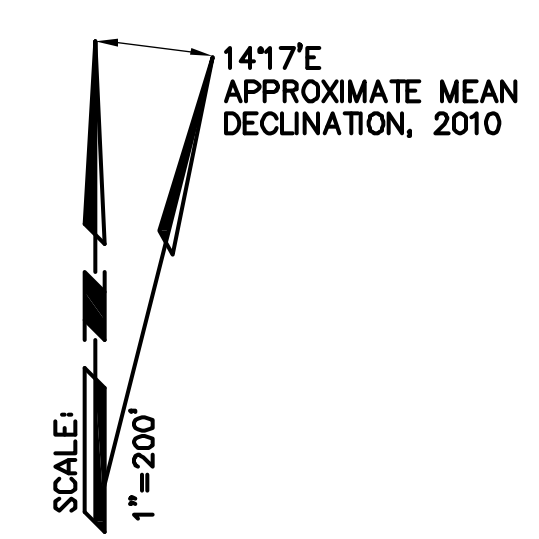
DENNIS G. MEYER, LS 4751  
 LICENSE EXPIRES: 9/30/11  
 DATE

**NOTES**

ALL FACILITIES AND FEATURES SHOWN HERE ON ARE PER DATA COLLECTED BY OTHERS.

**REFERENCE POINT COORDINATES**

NAD83 CALIFORNIA STATE PLANE COORDINATE SYSTEM ZONE II (CCS83, ZONE 2); U.S. SURVEY FEET



**EXHIBIT 'G' PROJECT 2079**  
**MIDDLE FORK AMERICAN RIVER PROJECT**  
**HELL HOLE RESERVOIR PROJECT AREA**  
 A PORTION OF SECTIONS 8, 9, 16, T.14 N., R.14 E., M.D.M.  
 PLACER COUNTY, CALIFORNIA  
 SCALE: 1"=200' FEBRUARY 11, 2011  
**ANDREGG GEOMATICS**  
 808-808-1072  
 SHEET 19 OF 33