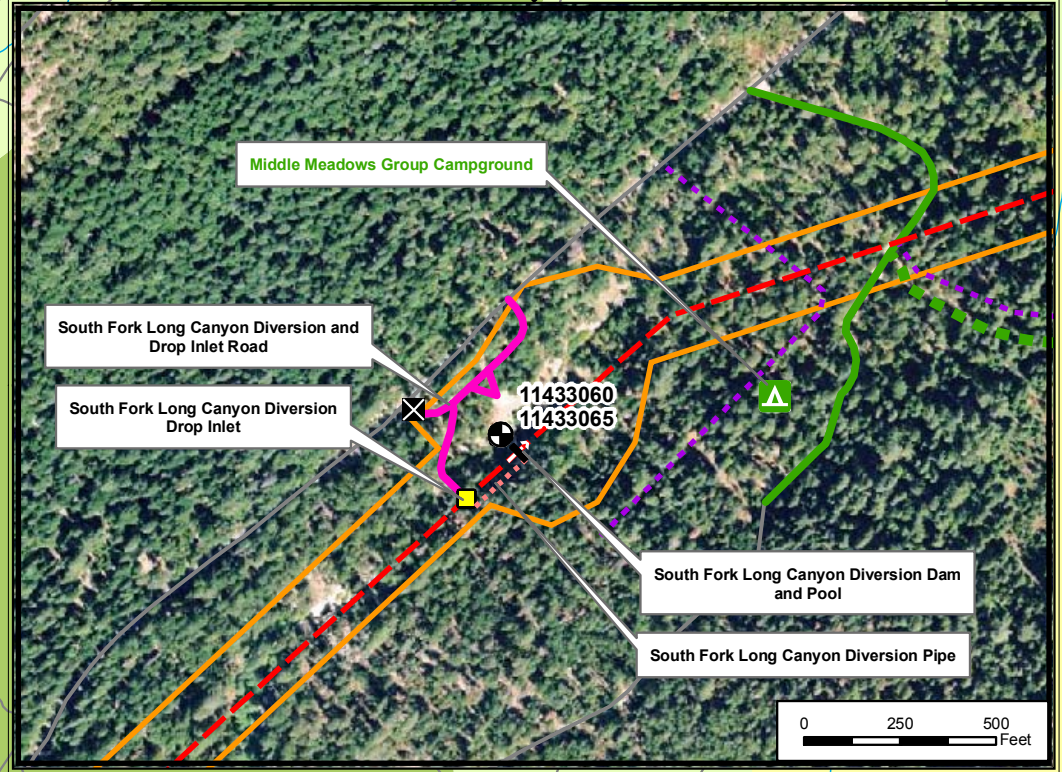
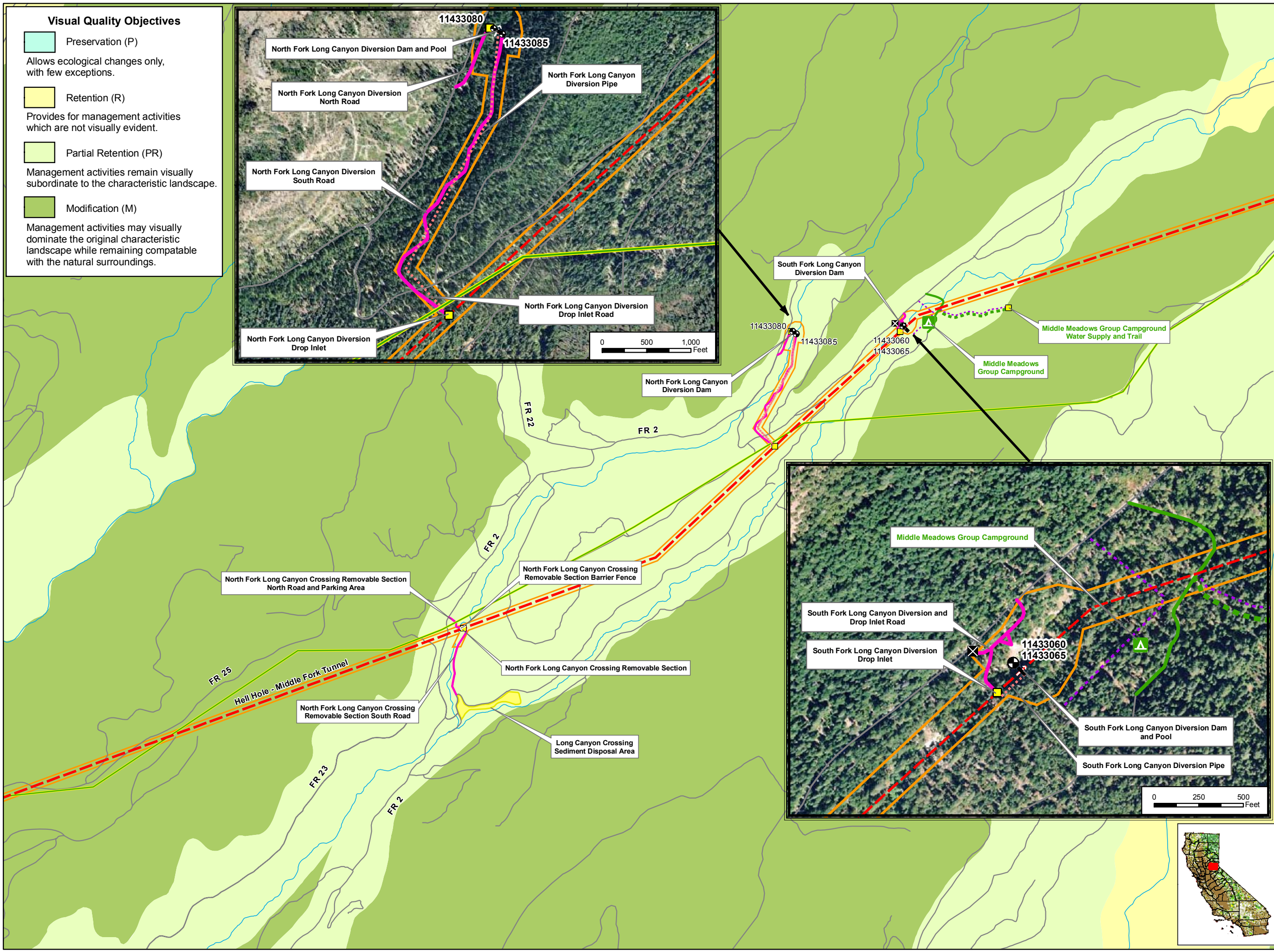
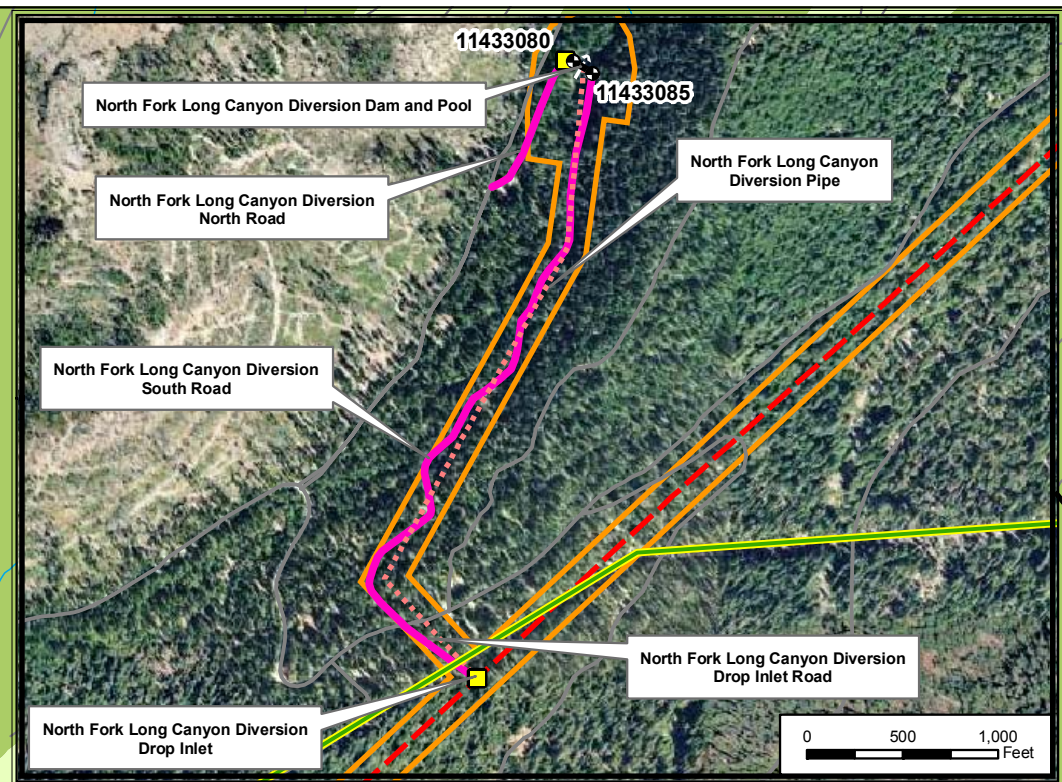


Visual Quality Objectives

- Preservation (P)**
Allows ecological changes only, with few exceptions.
- Retention (R)**
Provides for management activities which are not visually evident.
- Partial Retention (PR)**
Management activities remain visually subordinate to the characteristic landscape.
- Modification (M)**
Management activities may visually dominate the original characteristic landscape while remaining compatible with the natural surroundings.



PCWA Facilities and Features

- Dam
- Ancillary and Other Facilities
- Powerhouse
- Gage
- Reservoir Gage
- Penstock
- Tunnel
- Pipeline
- Gate
- Access Point
- Public Safety Fence
- FERC Boundary

Project Power and Communication Lines:

- Communication
- Power
- Power (underground)
- Communication/Power
- Communication/Power (underground)

Transportation

- Road
- Project Road
- Project Trail
- Recreation Access Road
- Recreation Facility Water Supply Access Road or Trail

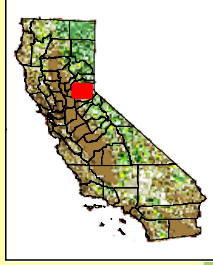
Project Recreation Facilities

- Picnic Area
- Boat Ramp
- Scenic Viewpoint
- Developed Campground
- Water Supply Line (Above ground)
- Water Supply Line (Buried)

Other Facilities

PG & E Transmission Lines:

- 230 kV
- 60 kV



Placer County Water Agency
Middle Fork American River Project

Map 12-1
Visual Quality Objectives
in the Vicinity of the MFP
Sheet 3 of 5
Long Canyon Area

0 0.25 0.5 Miles
Projection: Ca. Stateplane, Zone 2
Datum: NAD 83
Date: 11/9/07