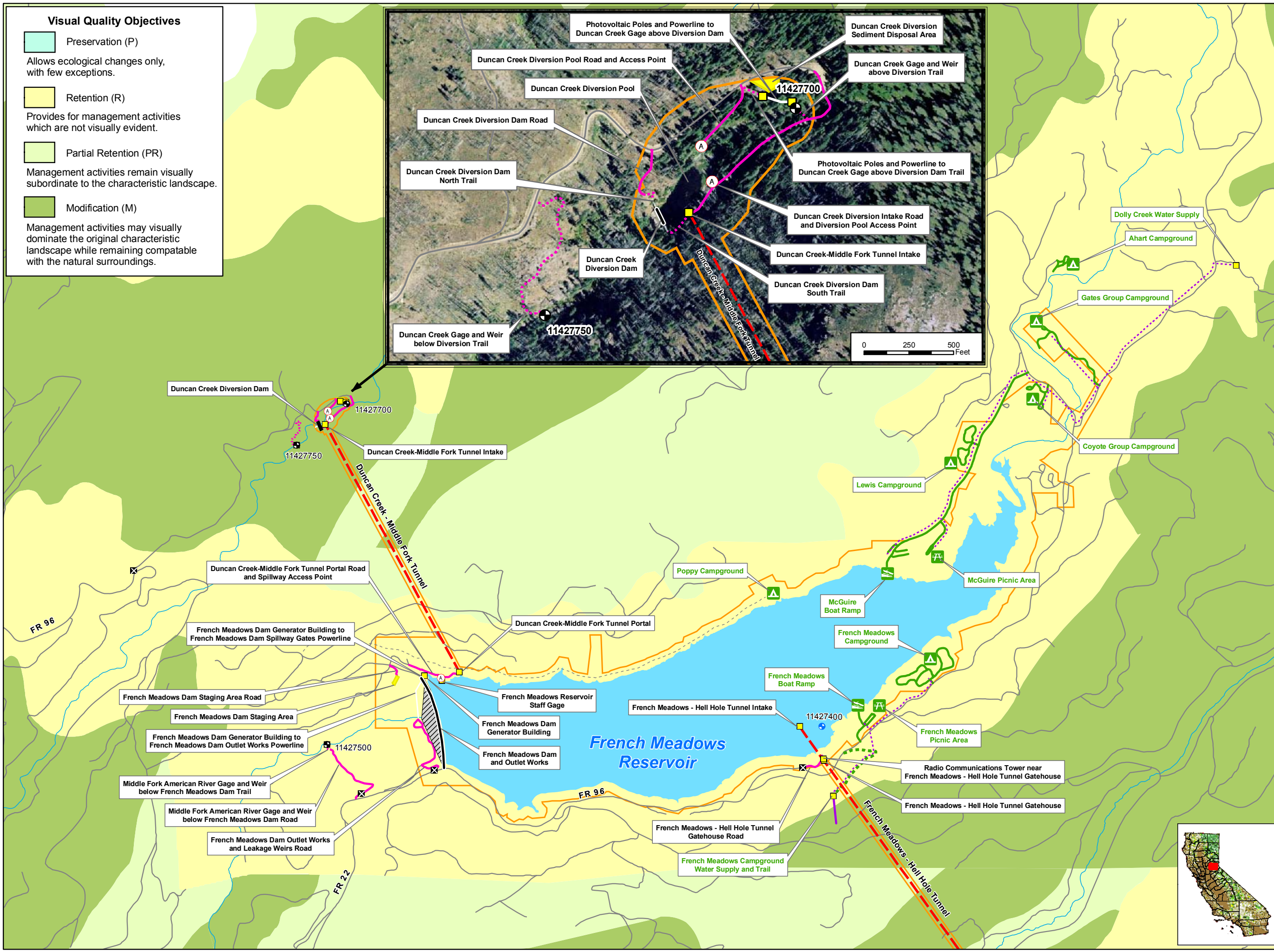
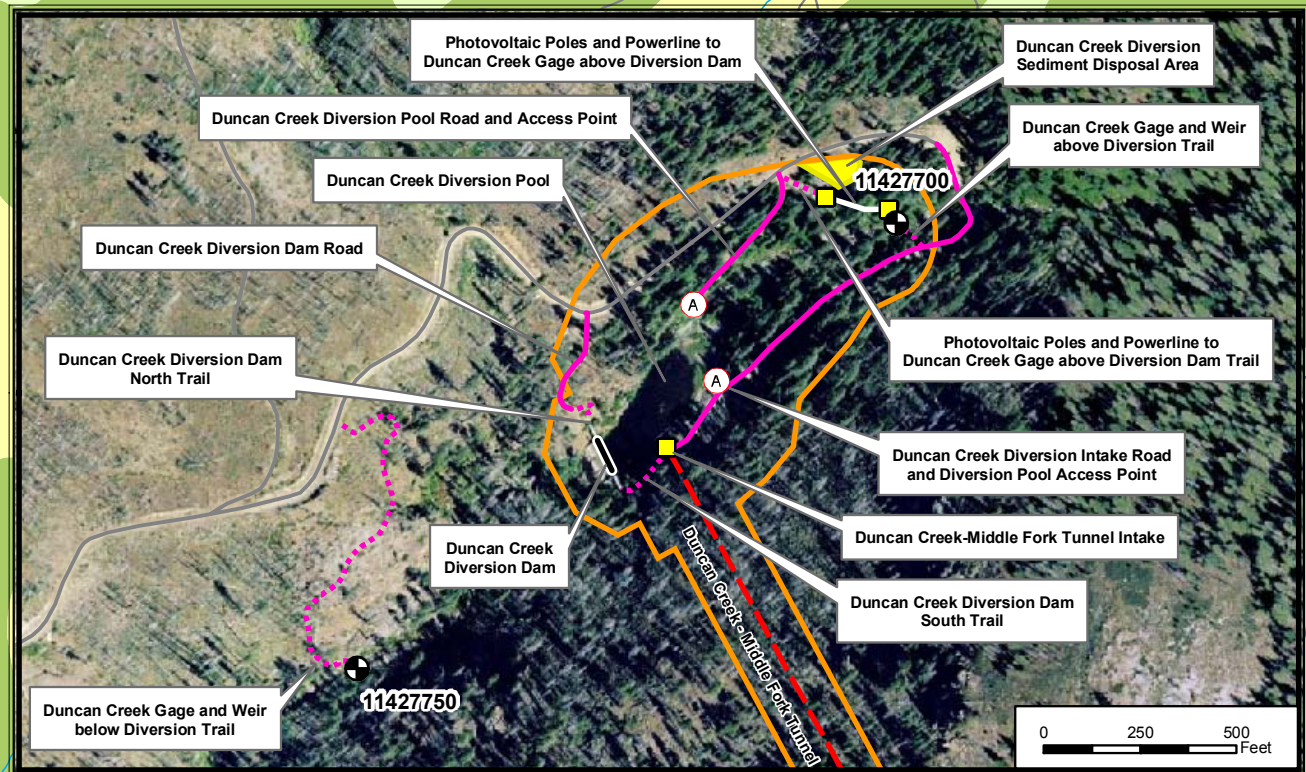


Visual Quality Objectives

- Preservation (P)
Allows ecological changes only, with few exceptions.
- Retention (R)
Provides for management activities which are not visually evident.
- Partial Retention (PR)
Management activities remain visually subordinate to the characteristic landscape.
- Modification (M)
Management activities may visually dominate the original characteristic landscape while remaining compatible with the natural surroundings.

PCWA Facilities and Features

- Dam
- Ancillary and Other Facilities
- Powerhouse
- Gage
- Reservoir Gage
- Penstock
- Tunnel
- Pipeline
- X Gate
- A Access Point
- Public Safety Fence
- FERC Boundary
- Project Power and Communication Lines:**
- Communication
- Power
- Power (underground)
- Communication/Power
- Communication/Power (underground)
- Transportation**
- Road
- Project Road
- Project Trail
- Recreation Access Road
- Recreation Facility Water Supply Access Road or Trail
- Project Recreation Facilities**
- A Picnic Area
- B Boat Ramp
- C Scenic Viewpoint
- D Developed Campground
- Water Supply Line (Above ground)
- Water Supply Line (Buried)
- Other Facilities**
- PG & E Transmission Lines:**
- 230 kV
- 60 kV



Placer County Water Agency
Middle Fork American River Project

Map 12-1
Visual Quality Objectives
in the Vicinity of the MFP
Sheet 1 of 5
Duncan Creek, French Meadows Area

