

California Home

Wednesday, November 10, 2004



[Catalog Home](#)

[Introduction](#)

[Contribute Data](#)

[Login](#)

[Offline Catalog](#)

[Look for Data](#)

[By Catalog](#)

[By Data Type](#)

[By Keyword](#)

[By Organization](#)

[By Geographic Area](#)

[Latest](#)

[Additions](#) **new**

[Collaborations](#)

[Catalog Contacts](#)

[Related Links](#)

[Resources Agency](#)

[California Spatial Information Library](#)

[CERES](#)

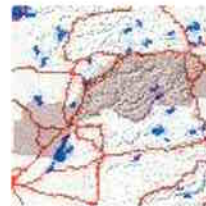


[Metadata Entry](#)

[Catalog: NRCS Soils Section Metadata Catalog](#)

Dataset: Soil Survey of Placer County, CA, Western Part

Geographic Bounding Box: Placer County



Quick Search:

[Advanced Search](#)



[XML ESRI style](#)

[XML classic style](#)

[XML no style](#)

Identifier: ca620

Citation Information

Title: Soil Survey of Placer County, CA, Western Part

Originator: USDA - Natural Resources Conservation Service

Edition:

Publication Date: 1980

Information Resource Type:

Format: Computer database, Computer file
Content: Maps, Spatial data, Survey data, Geographic information

[Other Citation Details:](#)

Identification Information

USGS**FGDC****CalSpace UCD**

Abstract: National Cooperative Soil Survey field mapping methods and standards were used to produce the soils maps that were digitized for the Soil Survey Geographic (SSURGO) database. SSURGO datasets represent the most detailed level of mapping done by the Natural Resources Conservation Service (NRCS). The mapping scale is typically 1:24000 and the digitizing is done by line segment (vector) format from orthophotoquads. SSURGO spatial data is linked to a tabular relational Map Unit Interpretation Record (MUIR) database that contains soil property and soil interpretation information. SSURGO datasets are available in modified digital line graph (DLG-3) optional format and in Arc Interchange formats. The MUIR tabular datasets and accompanying metadata sets are available as tab delimited ASCII file formats and text files.

**Browse
Graphic:**

[Metadata for Soil Survey of Placer County, CA, Western Part](#)

Purpose:

Soil surveys are made to provide information about soil properties and features on or near the surface of the earth. This information includes descriptions of the soils, maps of their locations, and a discussion of their suitabilities, limitations, and overall management concerns for specified uses. Soil survey provide basic resource inventory and management data to assist natural resource planners, managers, and decision-makers in the process of addressing natural resource concerns.

**Supplemental
Info:**

MUIR (Map Unit Interpretation Record) SSURGO (Soil Survey Geographic Database)

Time Period: Start: 1998-01-01 End: 1998-09-01

Currentness: Publication Date

Progress: Complete

**Update
Frequency:** None Planned

Places: Place Name of Bounding Box: Placer County
Other Place Names: Placer County

**Geographic
Region:** West: -121.4800 East: -120.0000 North: 39.3200 South: 38.7200

Themes: Soils, Agriculture, Erosion, Wetlands, Soil ecology, Soil science, Resource management, Conservation of natural resources, Digital Soils, Soil Survey Geographic, SSURGO

**Access
Limitations:** *No Restrictions*

**Use
Limitations:** *Limited Access*

Data Contact: [Daryl Lund](#)

Distribution Information

Online Link: http://www.ftw.nrcs.usda.gov/ssur_data.html

Metadata Information

Date: 1998-09-15

[Metadata](#)
Contact: [Daryl Lund](#)
[Metadata](#)
Standard:

Last Updated: 2004/02/18 09:06:50 GMT

[Back to Top of Page](#)

© 2000 State of California. Arnold Schwarzenegger, Governor. [Privacy Policy](#) [E-mail the Webmaster](#)