

**APPENDIX C1c**  
**Reservoir Water Surface Elevation Plots**



---

**TABLE OF CONTENTS**

---

**Hell Hole Reservoir**

- Figure C – 1. Hell Hole Reservoir Water Surface Elevation in Relation to the Hell Hole Boat Ramp Operational Range During Wet Water Years.
- Figure C – 2. Hell Hole Reservoir Water Surface Elevation in Relation to the Hell Hole Boat Ramp Operational Range During Above Normal Water Years.
- Figure C – 3. Hell Hole Reservoir Water Surface Elevation in Relation to the Hell Hole Boat Ramp Operational Range During Below Normal Water Years.
- Figure C – 4. Hell Hole Reservoir Water Surface Elevation in Relation to the Hell Hole Boat Ramp Operational Range During Dry Water Years.
- Figure C – 5. Hell Hole Reservoir Water Surface Elevation in Relation to the Hell Hole Boat Ramp Operational Range During Critical Water Years.
- Figure C – 6. Hell Hole Reservoir Water Surface Elevation in Relation to the Hell Hole Boat Ramp Operational Range During Extreme Critical Water Years.

**French Meadows Reservoir**

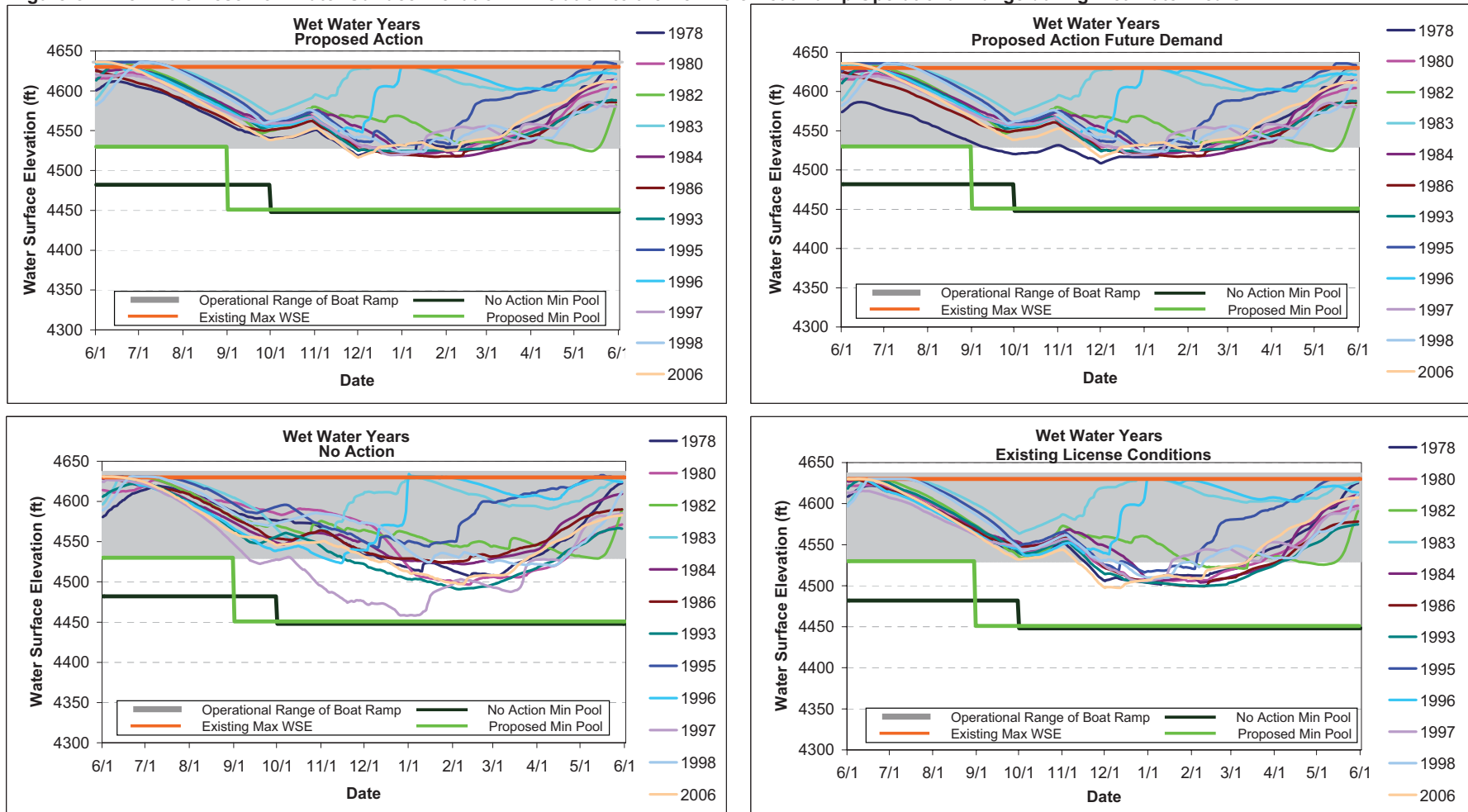
- Figure C – 7. French Meadows Reservoir Water Surface Elevation in Relation to the Hell Hole Boat Ramp Operational Range During Wet Water Years.
- Figure C – 8. French Meadows Reservoir Water Surface Elevation in Relation to the Hell Hole Boat Ramp Operational Range During Above Normal Water Years.
- Figure C – 9. French Meadows Reservoir Water Surface Elevation in Relation to the Hell Hole Boat Ramp Operational Range During Below Normal Water Years.
- Figure C – 10. French Meadows Reservoir Water Surface Elevation in Relation to the Hell Hole Boat Ramp Operational Range During Dry Water Years.
- Figure C – 11. French Meadows Reservoir Water Surface Elevation in Relation to the Hell Hole Boat Ramp Operational Range During Critical Water Years.
- Figure C – 12. French Meadows Reservoir Water Surface Elevation in Relation to the Hell Hole Boat Ramp Operational Range During Extreme Critical Water Years.



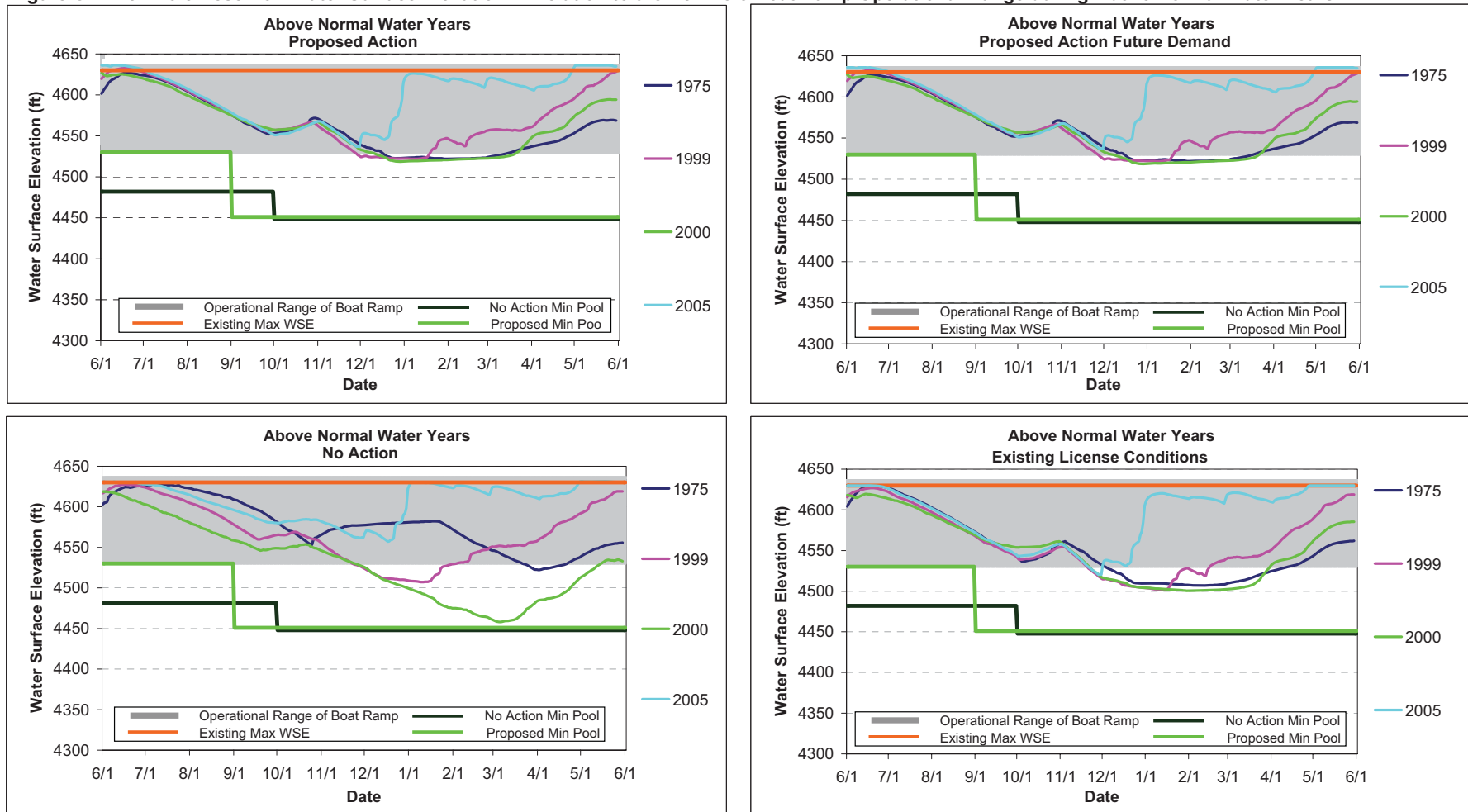
## **Hell Hole Reservoir**



**Figure C-1. Hell Hole Reservoir Water Surface Elevation in Relation to the Hell Hole Boat Ramp Operational Range during Wet Water Years.**



**Figure C-2. Hell Hole Reservoir Water Surface Elevation in Relation to the Hell Hole Boat Ramp Operational Range during Above Normal Water Years.**





**Figure C-3. Hell Hole Reservoir Water Surface Elevation in Relation to the Hell Hole Boat Ramp Operational Range during Below Normal Water Years.**

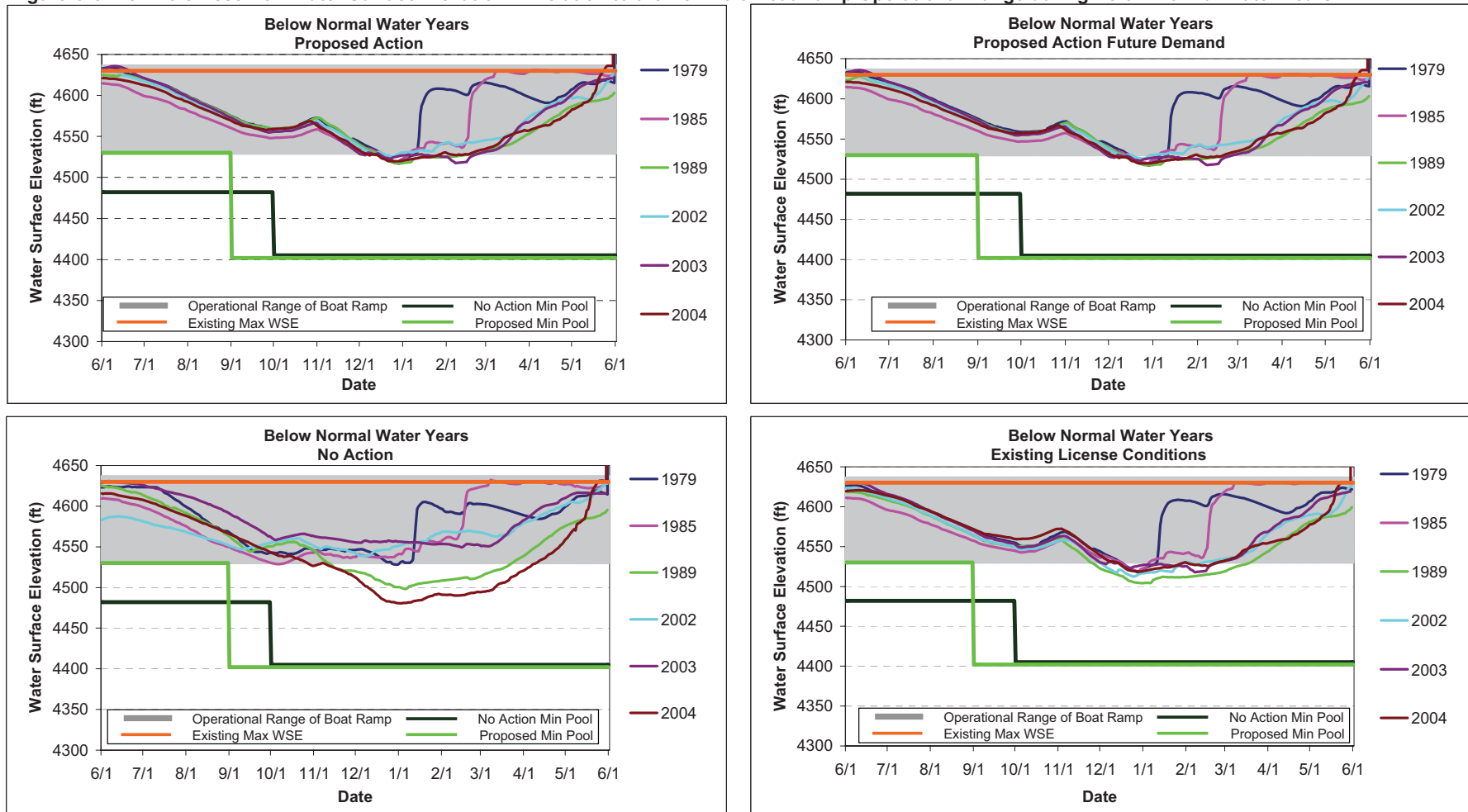


Figure C-4. Hell Hole Reservoir Water Surface Elevation in Relation to the Hell Hole Boat Ramp Operational Range during Dry Water Years.

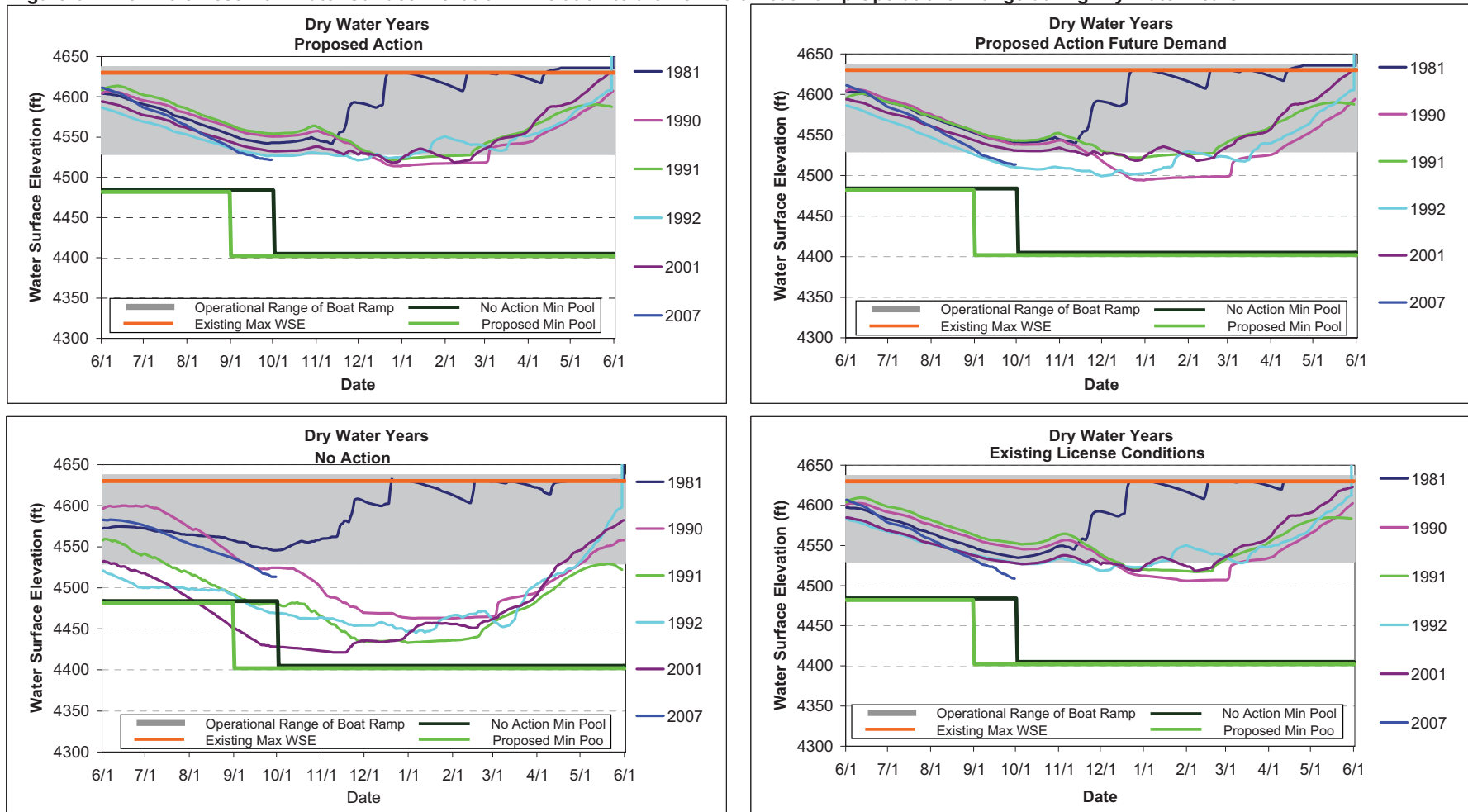
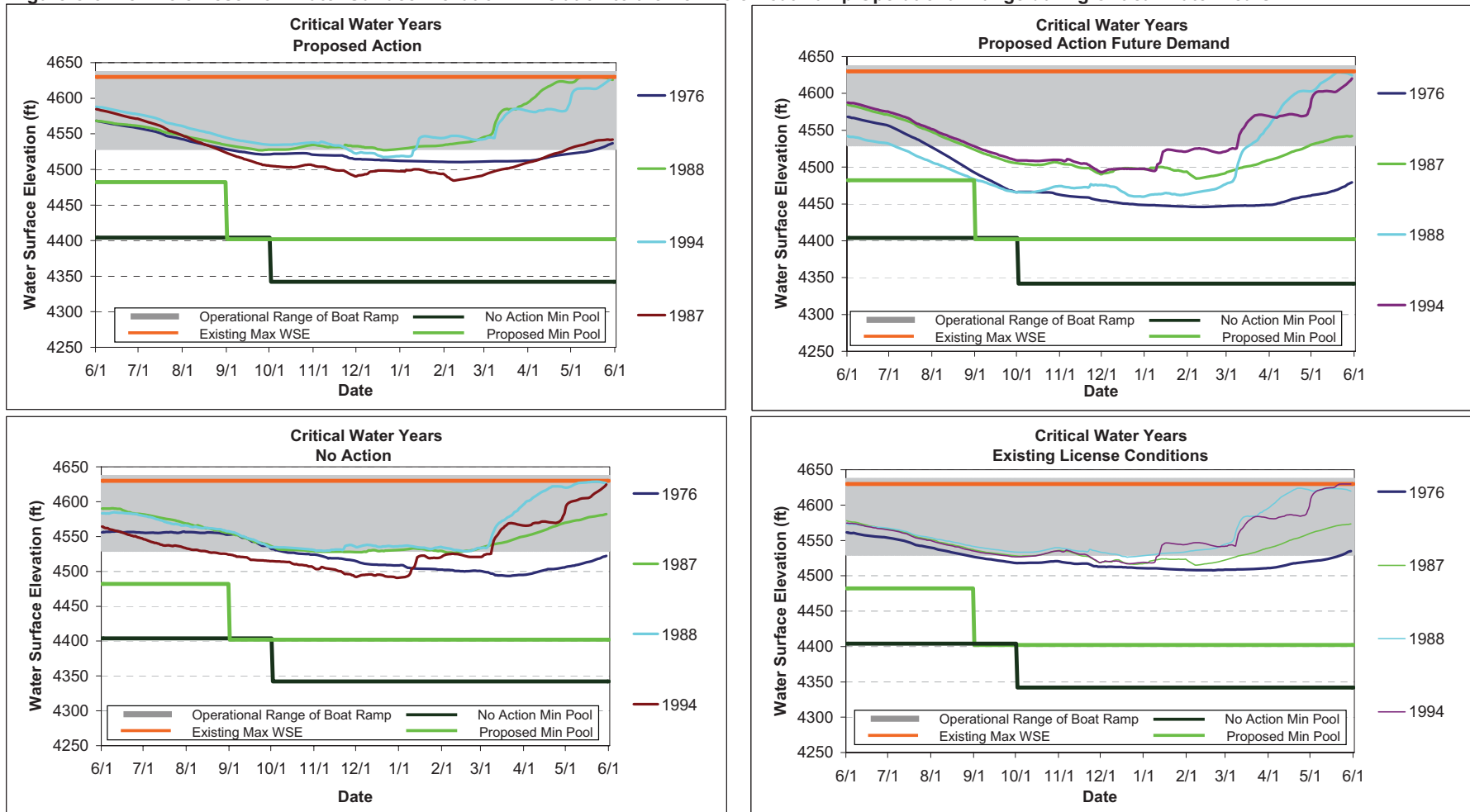
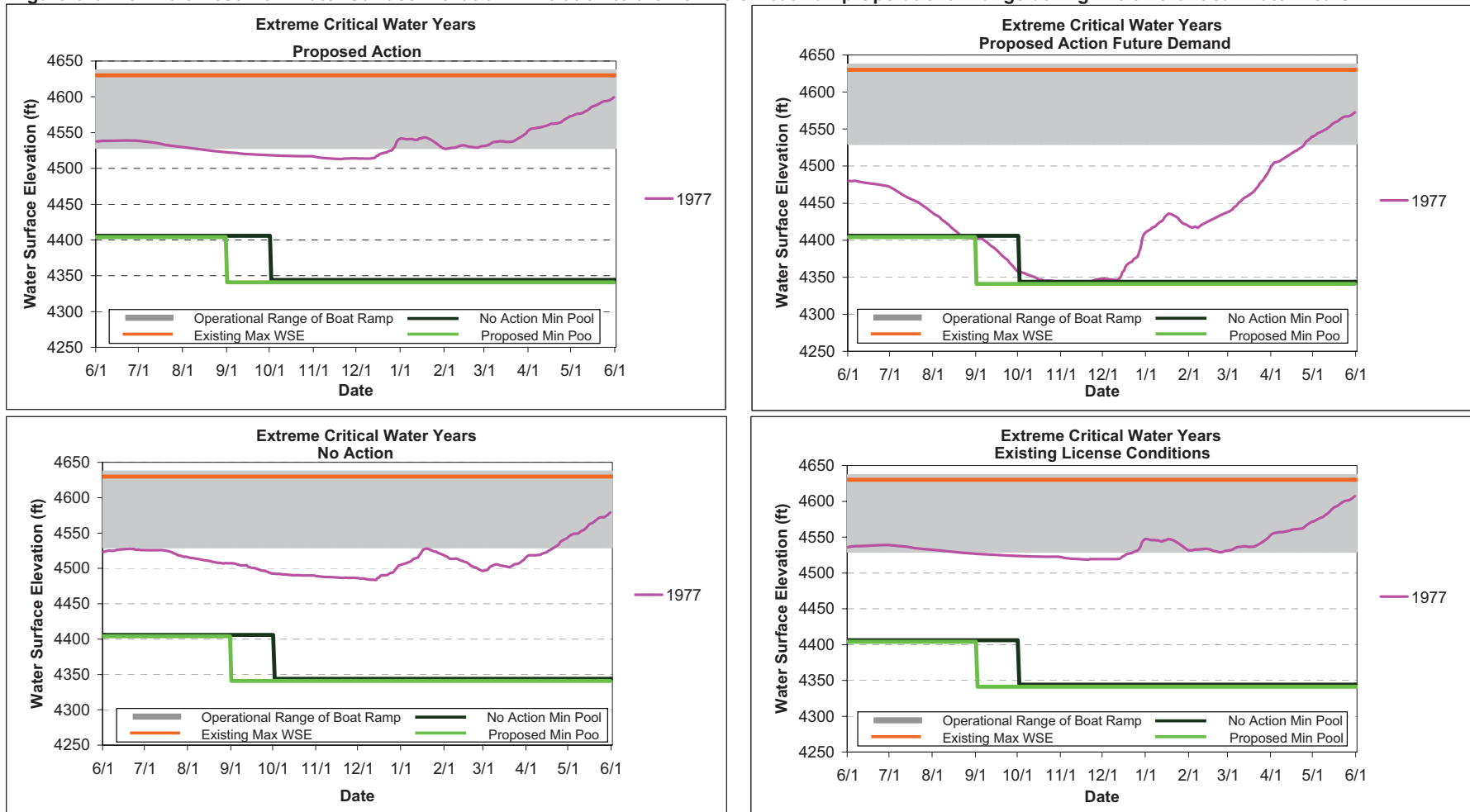


Figure C-5. Hell Hole Reservoir Water Surface Elevation in Relation to the Hell Hole Boat Ramp Operational Range during Critical Water Years.



**Figure C-6. Hell Hole Reservoir Water Surface Elevation in Relation to the Hell Hole Boat Ramp Operational Range during Extreme Critical Water Years.**



## **French Meadows Reservoir**



Figure C-7. French Meadows Reservoir Water Surface Elevation in Relation to the French Meadows Boat Ramp Operational Range during Wet Water Years.

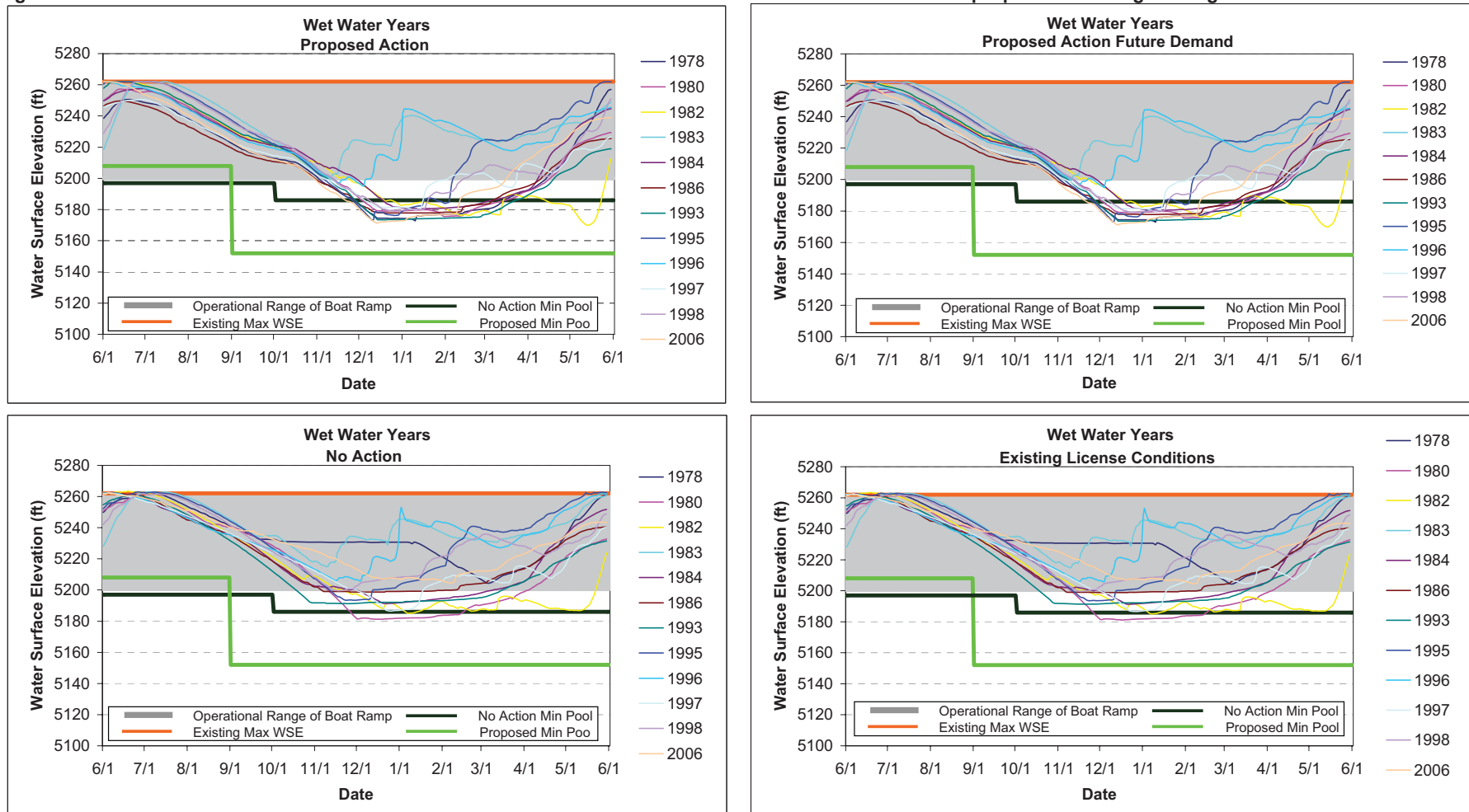
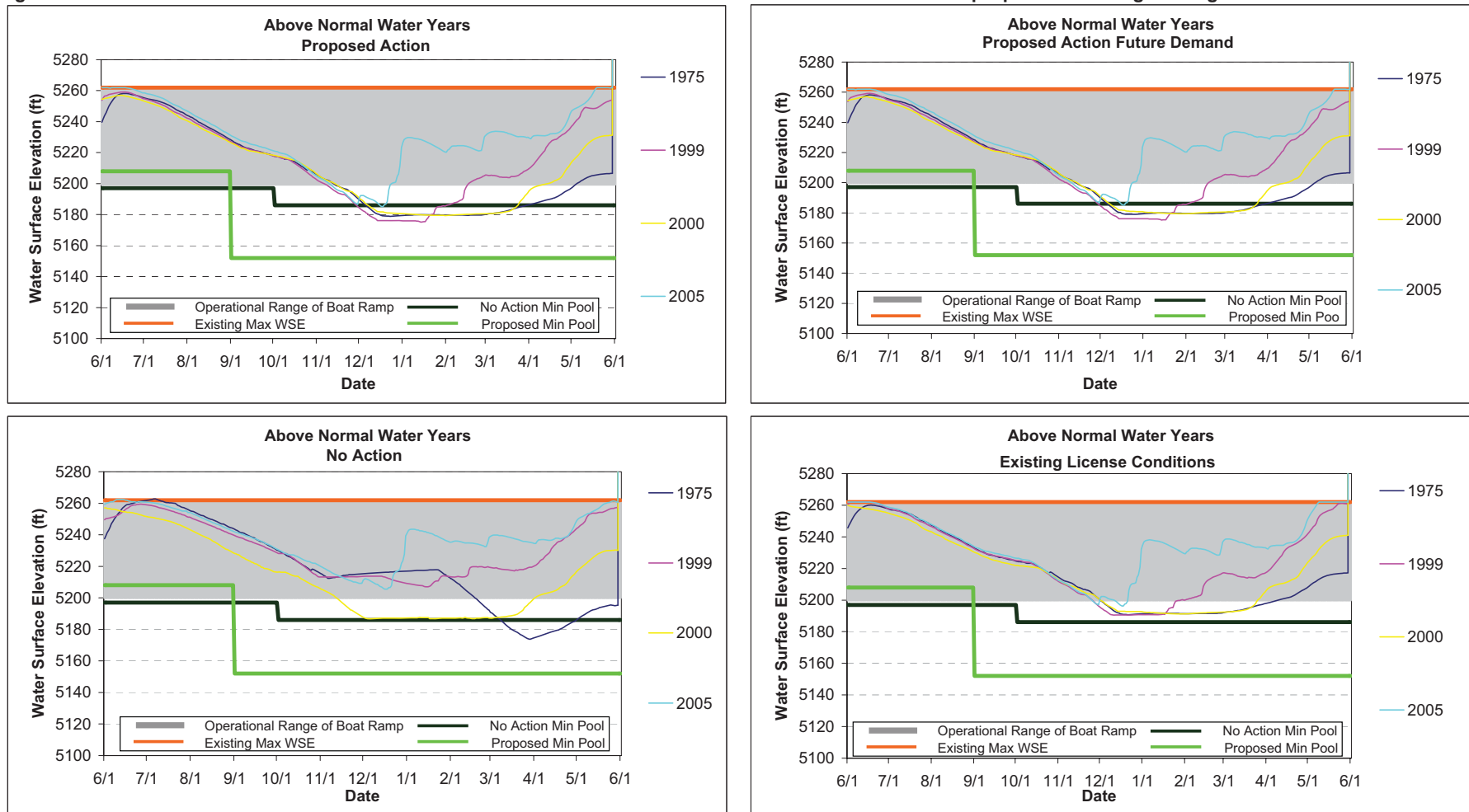


Figure C-8. French Meadows Reservoir Water Surface Elevation in Relation to the French Meadows Boat Ramp Operational Range during Above Normal Water Years.





**Figure C-9. French Meadows Reservoir Water Surface Elevation in Relation to the French Meadows Boat Ramp Operational Range during Below Normal Water Years.**

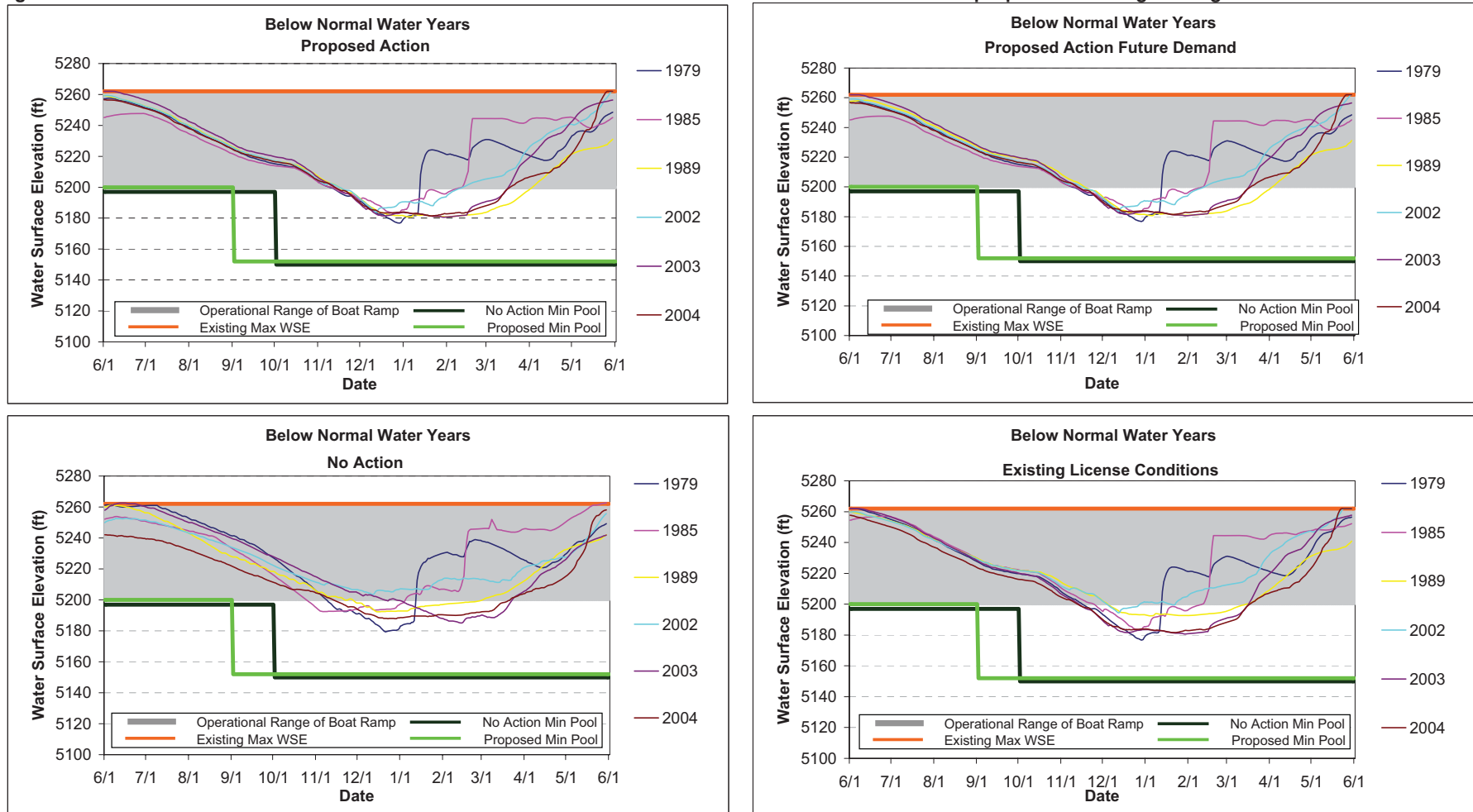


Figure C-10. French Meadows Reservoir Water Surface Elevation in Relation to the French Meadows Boat Ramp Operational Range during Dry Water Years.

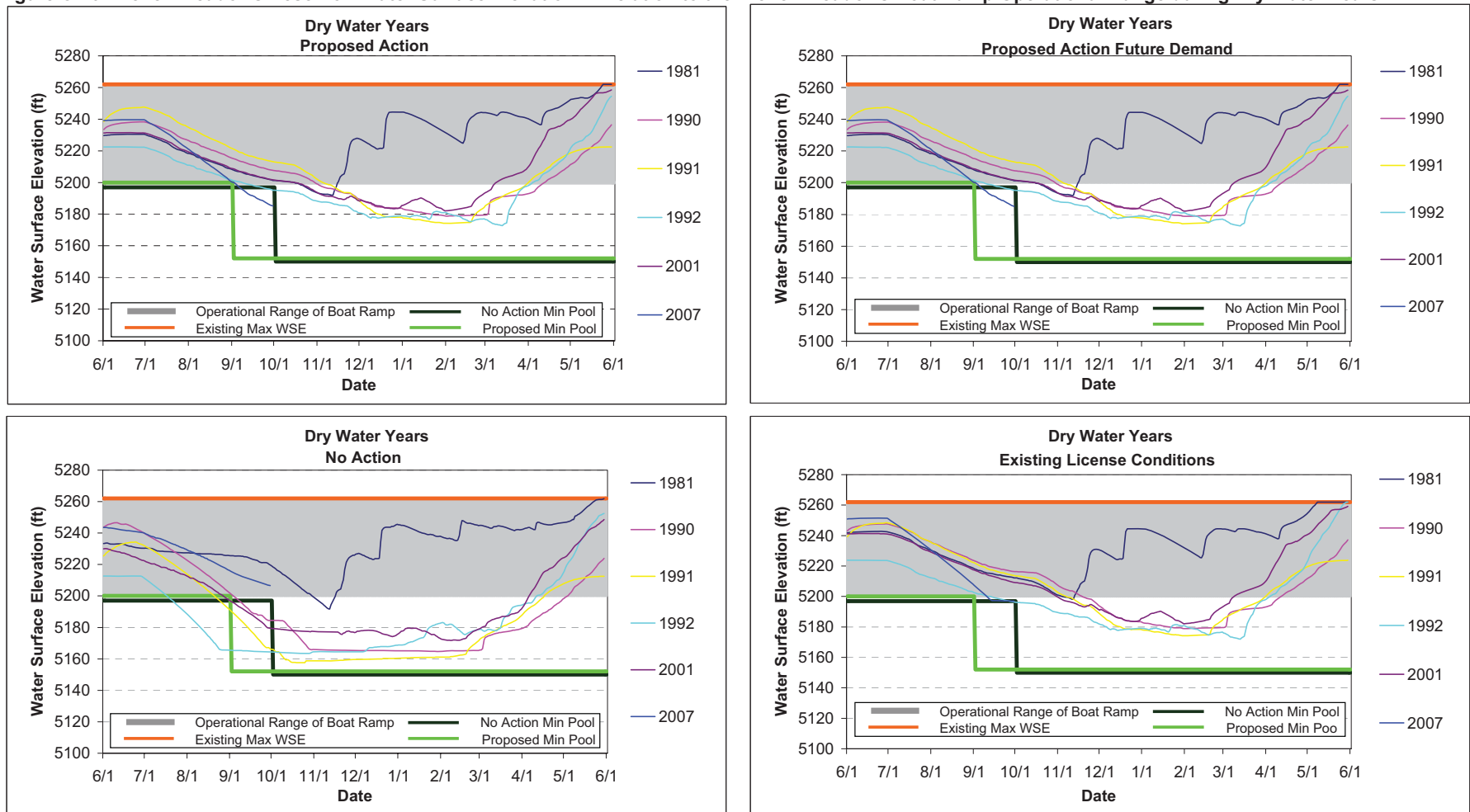
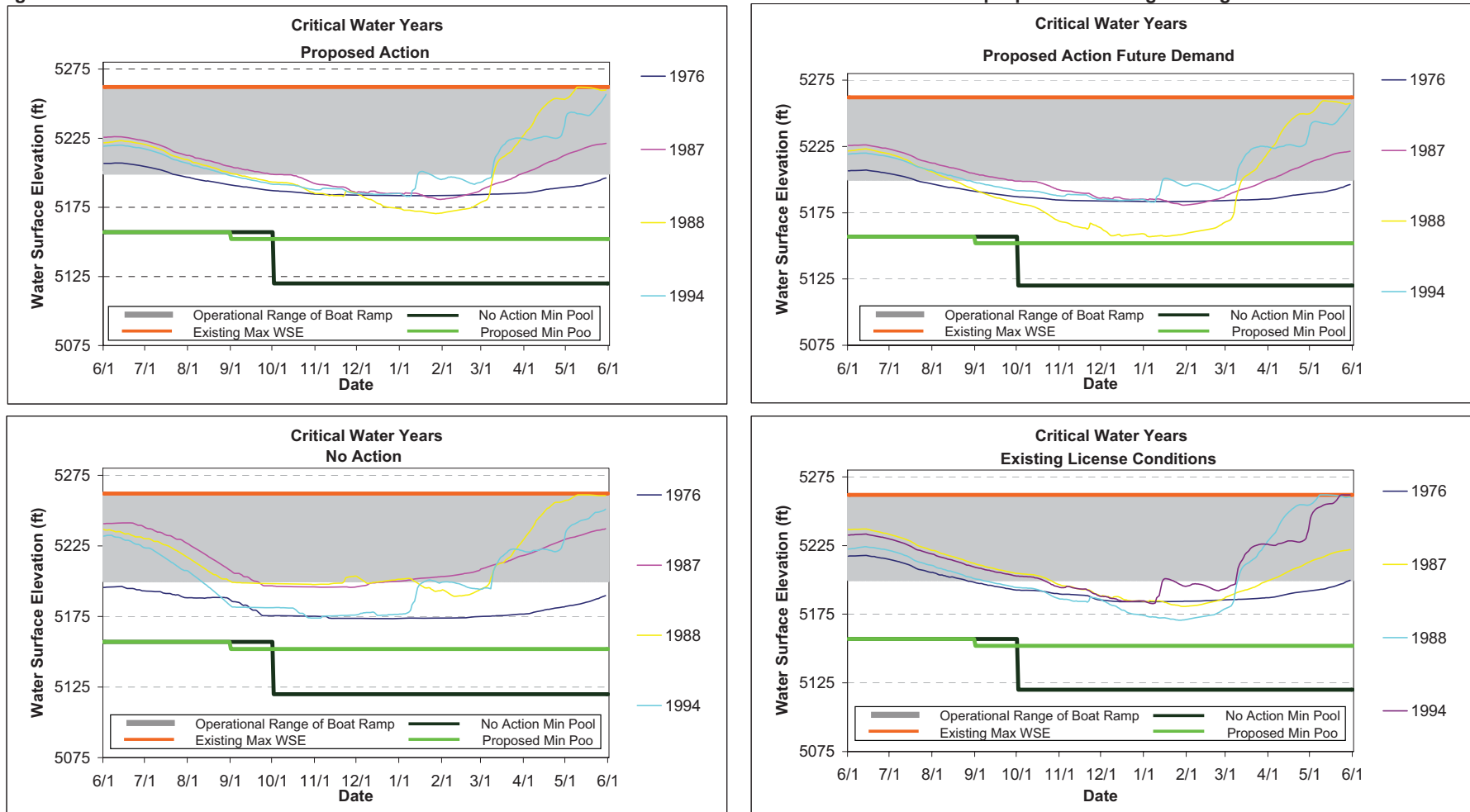


Figure C-11. French Meadows Reservoir Water Surface Elevation in Relation to the French Meadows Boat Ramp Operational Range during Critical Water Years.



**Figure C-12. French Meadows Reservoir Water Surface Elevation in Relation to the French Meadows Boat Ramp Operational Range during Extreme Critical Water Years.**

