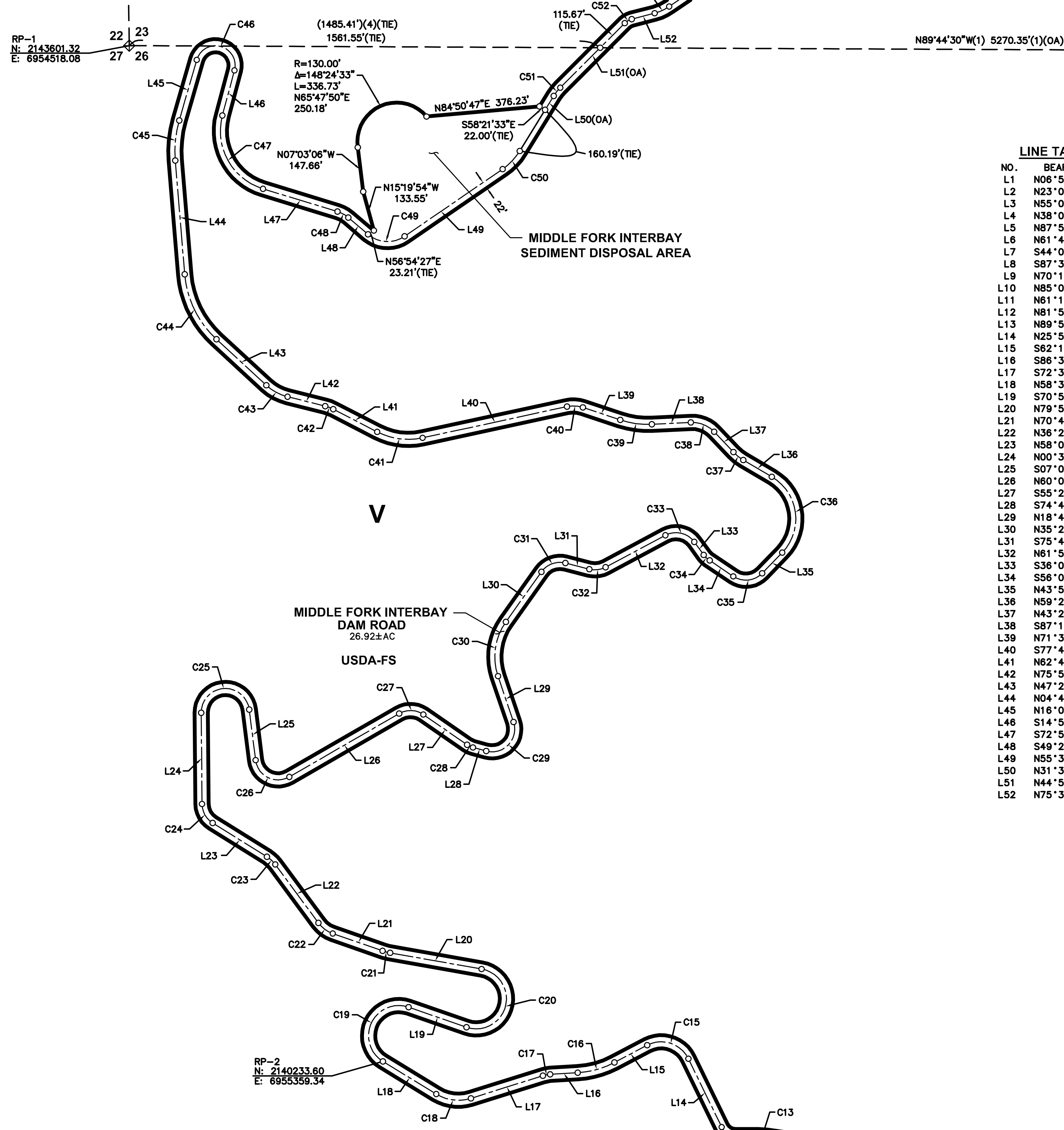


SEE SHEET 27

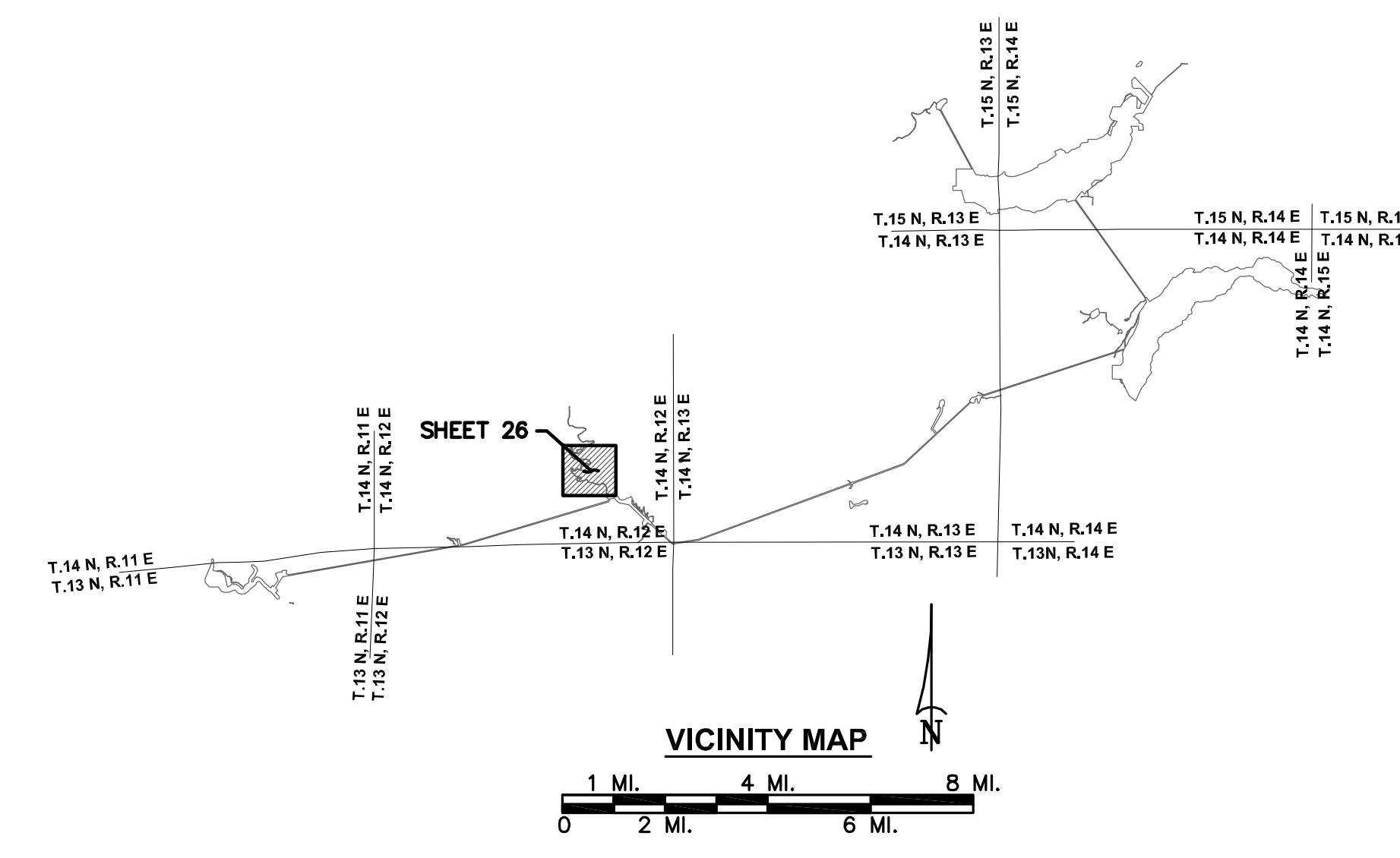


LINE TABULATION

NO.	BEARING	DIST.
L1	N06°57'18"E	429.97'
L2	N23°05'46"W	204.98'
L3	N55°07'23"W	120.42'
L4	N38°01'55"W	69.56'
L5	N87°53'44"W	32.87'
L6	N61°41'07"W	57.57'
L7	S44°07'26"W	87.55'
L8	S87°34'24"W	118.66'
L9	N70°11'03"W	83.36'
L10	N85°06'39"W	104.41'
L11	N61°15'23"W	151.39'
L12	N81°58'47"W	398.69'
L13	N89°53'51"W	76.67'
L14	N25°59'36"W	252.13'
L15	S62°16'02"W	122.98'
L16	S86°33'47"W	91.66'
L17	S72°32'55"W	250.20'
L18	N58°31'31"W	207.29'
L19	S70°55'19"E	203.24'
L20	N79°57'47"W	313.32'
L21	N70°44'29"W	179.60'
L22	N36°27'50"W	240.98'
L23	N58°05'01"W	212.05'
L24	N00°31'06"W	302.23'
L25	S07°09'08"E	188.88'
L26	N80°01'44"E	420.73'
L27	S55°20'43"E	176.53'
L28	S74°48'24"E	45.49'
L29	N18°42'00"W	160.56'
L30	N35°22'34"E	203.16'
L31	S75°44'22"E	82.06'
L32	N61°55'24"E	224.74'
L33	S36°07'45"E	57.29'
L34	S56°00'40"E	100.33'
L35	N43°58'52"E	95.36'
L36	S59°29'32"W	110.00'
L37	N43°23'19"W	92.64'
L38	S87°11'46"W	129.24'
L39	N71°32'33"W	130.61'
L40	S77°47'16"W	489.83'
L41	N62°43'48"W	163.71'
L42	N75°53'45"W	128.82'
L43	N47°21'20"W	224.84'
L44	N04°43'39"W	378.22'
L45	N16°04'01"E	209.12'
L46	S14°57'52"W	155.04'
L47	S72°59'11"E	258.55'
L48	S49°26'46"E	85.82'
L49	N55°32'33"E	394.04'
L50	N31°38'27"E	214.52'
L51	N44°59'45"E	302.59'
L52	N75°31'46"E	78.90'

CURVE TABULATION

NO.	RADIUS	DELTA	LENGTH	BEARING	DIST.
C1	50.00'	15°13'36"	13.29'	N00°39'30"W	13.25'
C2	325.00'	30°03'04"	170.46'	N08°04'13"W	168.51'
C3	75.00'	32°01'38"	41.92'	N39°06'34"W	41.38'
C4	100.00'	17°05'29"	29.83'	S46°34'39"E	29.72'
C5	75.00'	49°51'50"	65.27'	N62°57'50"W	63.23'
C6	75.00'	26°12'38"	34.31'	S74°47'26"E	34.01'
C7	75.00'	74°11'27"	97.12'	S81°13'10"W	90.47'
C8	125.00'	43°26'58"	94.79'	N65°50'55"E	92.54'
C9	125.00'	22°14'33"	48.53'	S81°18'20"E	48.22'
C10	125.00'	14°55'36"	32.56'	N77°38'51"W	32.47'
C11	200.00'	23°51'16"	83.27'	S73°11'01"E	82.67'
C12	200.00'	20°43'24"	72.34'	N71°37'05"W	71.94'
C13	200.00'	7°55'04"	27.64'	N85°56'19"W	27.62'
C14	50.00'	63°54'15"	55.77'	S57°56'43"E	52.92'
C15	100.00'	91°44'22"	160.12'	N71°51'47"W	143.55'
C16	300.00'	24°17'45"	127.21'	N74°24'55"E	126.26'
C17	100.00'	14°00'52"	24.46'	S79°33'21"W	24.40'
C18	140.00'	48°55'34"	119.55'	S82°59'18"E	115.95'
C19	100.00'	167°36'12"	292.52'	S25°16'35"W	198.83'
C20	100.00'	189°02'28"	329.94'	N14°33'27"E	199.38'
C21	100.00'	9°13'18"	16.09'	S75°21'08"E	16.08'
C22	100.00'	34°16'39"	59.83'	S53°36'09"E	58.94'
C23	100.00'	21°37'12"	37.73'	N47°16'25"W	37.51'
C24	75.00'	57°33'55"	75.35'	S29°18'04"E	72.22'
C25	80.00'	173°21'58"	242.06'	S86°09'53"W	159.73'
C26	75.00'	112°49'08"	147.68'	S83°33'42"E	124.95'
C27	75.00'	64°37'33"	84.60'	N87°39'30"W	80.18'
C28	62.50'	19°27'41"	21.23'	S65°04'34"E	21.13'
C29	75.00'	123°53'35"	162.18'	N43°14'48"E	132.38'
C30	200.00'	54°04'34"	188.78'	S08°20'17"W	181.83'
C31	75.00'	68°53'04"	90.17'	S69°49'06"W	84.84'
C32	75.00'	42°20'14"	55.42'	N83°05'31"E	54.17'
C33	75.00'	81°56'51"	107.27'	N77°06'10"W	98.36'
C34	50.00'	19°52'54"	17.35'	S46°04'12"E	17.26'
C35	75.00'	80°00'29"	104.73'	N83°59'06"E	96.43'
C36	161.51'	103°28'23"	291.68'	N07°45'20"W	253.63'
C37	150.00'	16°06'13"	42.16'	S51°26'25"E	42.02'
C38	100.00'	49°24'56"	86.25'	N68°05'47"W	83.60'
C39	287.50'	21°15'42"	106.69'	S82°10'24"E	106.08'
C40	100.00'	30°40'12"	53.53'	N88°52'39"W	52.89'
C41	225.00'	39°28'58"	155.05'	S82°28'16"E	152.00'
C42	125.00'	13°09'57"	28.72'	N69°18'47"W	28.66'
C43	162.50'	28°32'25"	80.94'	S81°37'33"E	80.11'
C44	330.00'	42°37'41"	245.52'	S28°02'30"E	239.90'
C45	370.00'	20°47'40"	134.28'	S05°40'11"W	133.55'
C46	65.00'	178°53'51"	202.95'	N74°29'04"W	129.99'
C47	200.00'	87°57'03"	307.01'	S29°00'40"E	277.74'
C48	100.00'	23°32'25"	41.09'	N61°12'59"W	40.80'
C49	100.00'	75°00'40"	130.92'	S86°57'07"E	121.77'
C50	200.00'	23°54'06"	83.43'	N43°35'30"E	82.83'
C51	150.00'	13°21'18"	34.96'	S38°19'06"W	34.88'
C52	50.00'	30°32'01"	26.65'	S60°15'45"W	26.33'



LEGEND

- PROJECT BOUNDARY
- RESERVOIR STORAGE STAGE
- TUNNEL (WITH SHAFT)
- SECTION LINE, ESTABLISHED
- SECTION LINE, PROTRACTED
- SUBDIVISION LINE, GOVERNMENT LAND SURVEY
- SECTION CORNER, FOUND
- SECTION CORNER, RECORD
- 1/4 CORNER, FOUND
- 1/4 CORNER, RECORD
- COUNTY LINE
- U.S. FOREST BOUNDARY
- PROJECT BOUNDARY CORNER
- (OA) OVERALL DIMENSION
- RP REFERENCE POINT
- V ROAD
- BRIDGE
- RIVER OR PERENNIAL STREAM
- INTERMITTENT STREAM
- SPRING
- POND OR LAKE, WATER LEVEL JULY 1961
- TREES OR BRUSH
- STREAM FLOW GAGING STATION
- WATER SURFACE GAGING STATION
- CAMPGROUND
- BUILDING
- GOVERNMENT BENCH MARK
- BENCH MARK RELOCATION
- PHOTOGRAMMETRIC PRINCIPAL POINT
- TRIANGULATION STATION
- 4121.2 FIELD ESTABLISHED ELEVATION
- x 97 PHOTOGRAMMETRIC ELEVATION
- M R O MINERAL RIGHTS ONLY
- (1) RECORD PER 2 ROS 78
- (2) RECORD PER 9 ROS 126
- (3) RECORD PER 13 ROS 157
- (4) RECORD PER 3 ROS 78

**NOTES**  
 ALL FACILITIES AND FEATURES SHOWN HERE ON ARE PER DATA COLLECTED BY OTHERS.

**REFERENCE POINT COORDINATES**  
 NAD83 CALIFORNIA STATE PLANE COORDINATE SYSTEM ZONE II (CCS83, ZONE 2);  
 U.S. SURVEY FEET

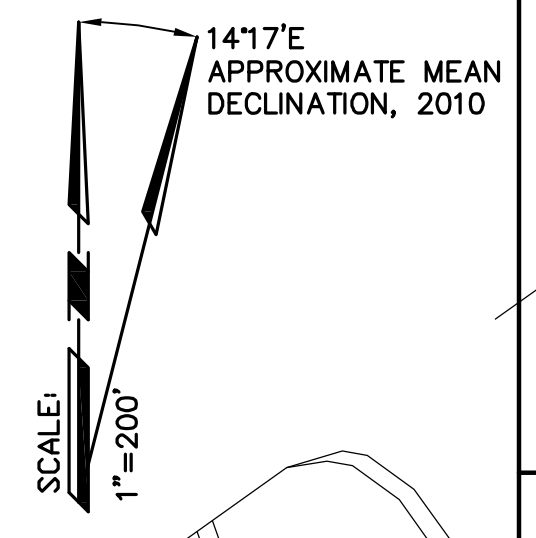
**SURVEYOR'S STATEMENT**  
 I CERTIFY THAT I SUPERVISED THE SURVEY OF THE PROJECT LANDS; THAT THE PROJECT BOUNDARY DELINEATION FOR THE MIDDLE FORK AMERICAN RIVER PROJECT AS SHOWN ON THIS EXHIBIT "G" IS DEVELOPED WITHIN REASONABLE ACCURACIES AS REQUIRED IN 18CFR4.39 & 18CFR4.41 TO THE GEOGRAPHIC LOCATION. SEE CONTROL SCHEME FOR DETAILS OF THE BOUNDARY DELINEATION AND DATA ACQUISITION.

ANDREGG GEOMATICS

DENNIS G. MEYER, LS 4751  
 LICENSE EXPIRES: 9/30/11

DATE \_\_\_\_\_

RP-3  
 N: 2138765.14  
 E: 6958220.16



**EXHIBIT 'G' PROJECT 2079**  
**MIDDLE FORK AMERICAN RIVER PROJECT**  
**MIDDLE FORK INTERBAY DAM ROAD**  
 A PORTION OF SECTIONS 26, T.14 N., R.12 E., M.D.M.  
 PLACER COUNTY, CALIFORNIA  
 SCALE: 1"=200' SEPTEMBER 24, 2010

**ANDREGG GEOMATICS**  
 060-006-7072

50 100 200 400 600  
 SHEET 26 OF 33