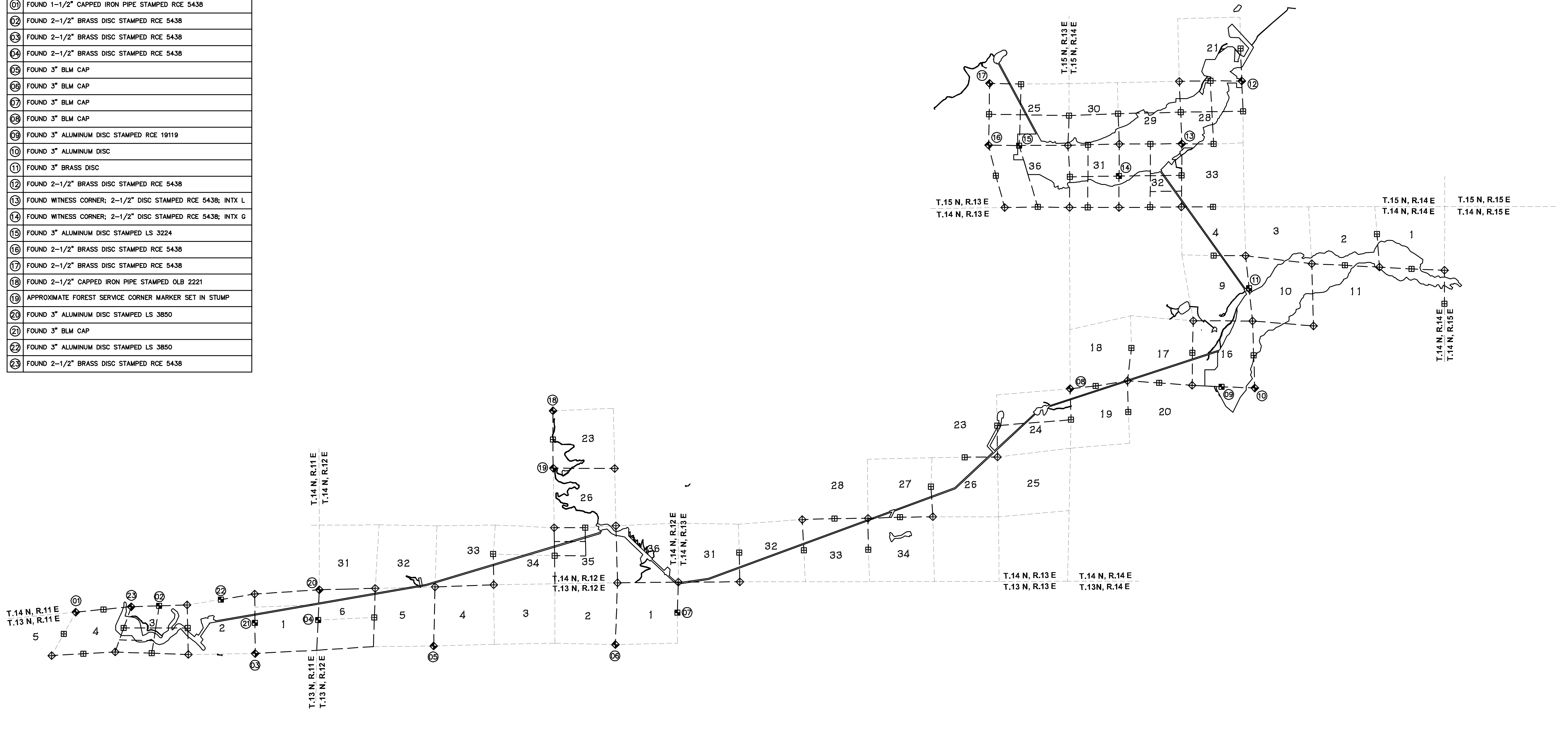


**FOUND MONUMENT DETAILS**

①	FOUND 1-1/2" CAPPED IRON PIPE STAMPED RCE 5438
②	FOUND 2-1/2" BRASS DISC STAMPED RCE 5438
③	FOUND 2-1/2" BRASS DISC STAMPED RCE 5438
④	FOUND 2-1/2" BRASS DISC STAMPED RCE 5438
⑤	FOUND 3" BLM CAP
⑥	FOUND 3" BLM CAP
⑦	FOUND 3" BLM CAP
⑧	FOUND 3" BLM CAP
⑨	FOUND 3" ALUMINUM DISC STAMPED RCE 19119
⑩	FOUND 3" ALUMINUM DISC
⑪	FOUND 3" BRASS DISC
⑫	FOUND 2-1/2" BRASS DISC STAMPED RCE 5438
⑬	FOUND WITNESS CORNER; 2-1/2" DISC STAMPED RCE 5438; INTX L
⑭	FOUND WITNESS CORNER; 2-1/2" DISC STAMPED RCE 5438; INTX G
⑮	FOUND 3" ALUMINUM DISC STAMPED LS 3224
⑯	FOUND 2-1/2" BRASS DISC STAMPED RCE 5438
⑰	FOUND 2-1/2" BRASS DISC STAMPED RCE 5438
⑱	FOUND 2-1/2" CAPPED IRON PIPE STAMPED OLB 2221
⑲	APPROXIMATE FOREST SERVICE CORNER MARKER SET IN STUMP
⑳	FOUND 3" ALUMINUM DISC STAMPED LS 3850
㉑	FOUND 3" BLM CAP
㉒	FOUND 3" ALUMINUM DISC STAMPED LS 3850
㉓	FOUND 2-1/2" BRASS DISC STAMPED RCE 5438



**LEGEND**

- ◆ SECTION CORNER, FOUND
- ◇ SECTION CORNER, PROJECTED
- 1/4 CORNER, FOUND
- ▣ 1/4 CORNER, PROJECTED

**EXHIBIT 'G' PROJECT 2079**  
**MIDDLE FORK AMERICAN RIVER PROJECT**  
**FOUND MONUMENT EXHIBIT**  
 A PORTION OF T.13 N., R.11 E.; T.13 N., R.12 E.; T.13 N., R.13 E.; T.14 N., R.12 E.; T.14 N., R.13 E.;  
 T.14 N., R.14 E.; T.14 N., R.15 E.; T.15 N., R.13 E.; T.15 N., R.14 E., M.D.M.  
 PLACER COUNTY, CALIFORNIA  
 FEBRUARY 11, 2011  
**ANDREGG**  
**GEOMATICS**  
10440-0072  
www.andregg.com

0 0.5 MI 1 MI 2 MI 3 MI 4 MI