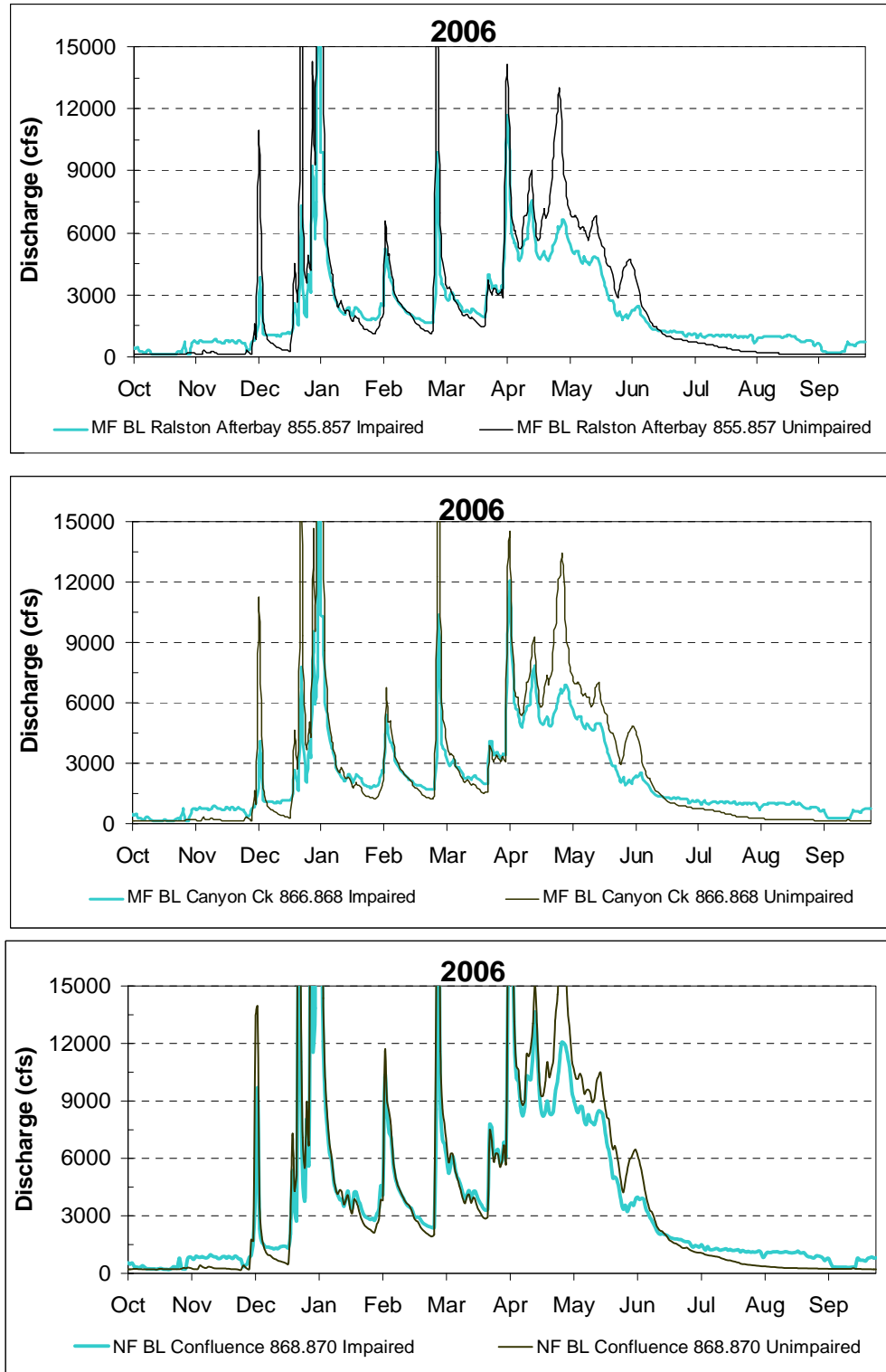
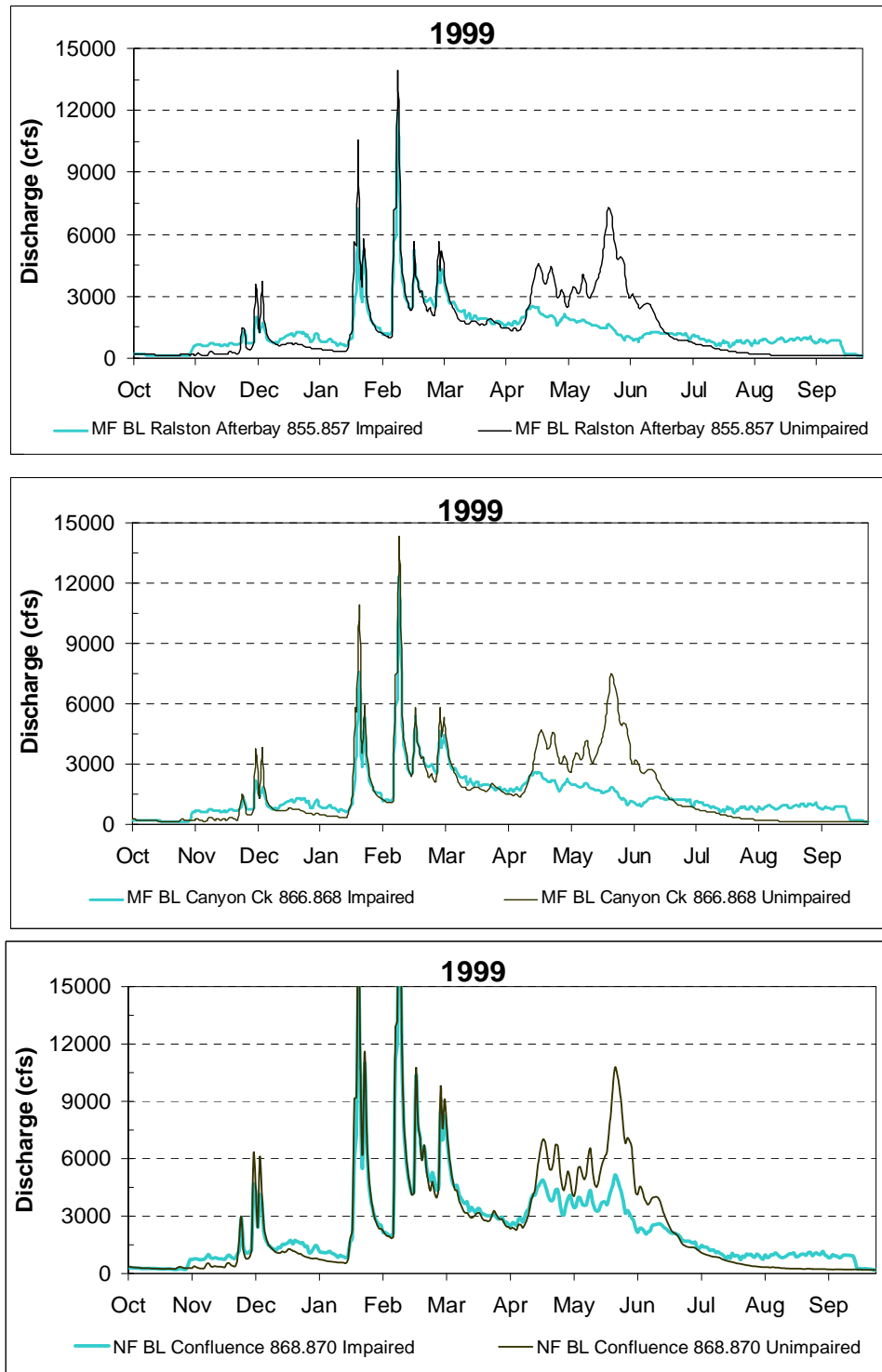


	Page
Figure M-1. Example daily average wet water year (2006) flows in the Middle Fork American River below Ralston Afterbay (top), Middle Fork American River downstream of Canyon Creek (middle), and the North Fork American River below the Middle Fork American River Confluence (bottom).....	1
Figure M-2. Example daily average above normal water year (1999) flows in the Middle Fork American River below Ralston Afterbay (top), Middle Fork American River downstream of Canyon Creek (middle), and the North Fork American River below the Middle Fork American River Confluence (bottom). .....	2
Figure M-3. Example daily average below water year (2003) flows in the Middle Fork American River below Ralston Afterbay (top), Middle Fork American River downstream of Canyon Creek (middle), and the North Fork American River below the Middle Fork American River Confluence (bottom).....	3
Figure M-4. Example daily average dry water year (2001) flows in the Middle Fork American River below Ralston Afterbay (top), Middle Fork American River downstream of Canyon Creek (middle), and the North Fork American River below the Middle Fork American River Confluence (bottom).....	4
Figure M-5. Example daily average critical dry water year (1999) flows in the Middle Fork American River below Ralston Afterbay (top), Middle Fork American River downstream of Canyon Creek (middle), and the North Fork American River below the Middle Fork American River Confluence (bottom). .....	5

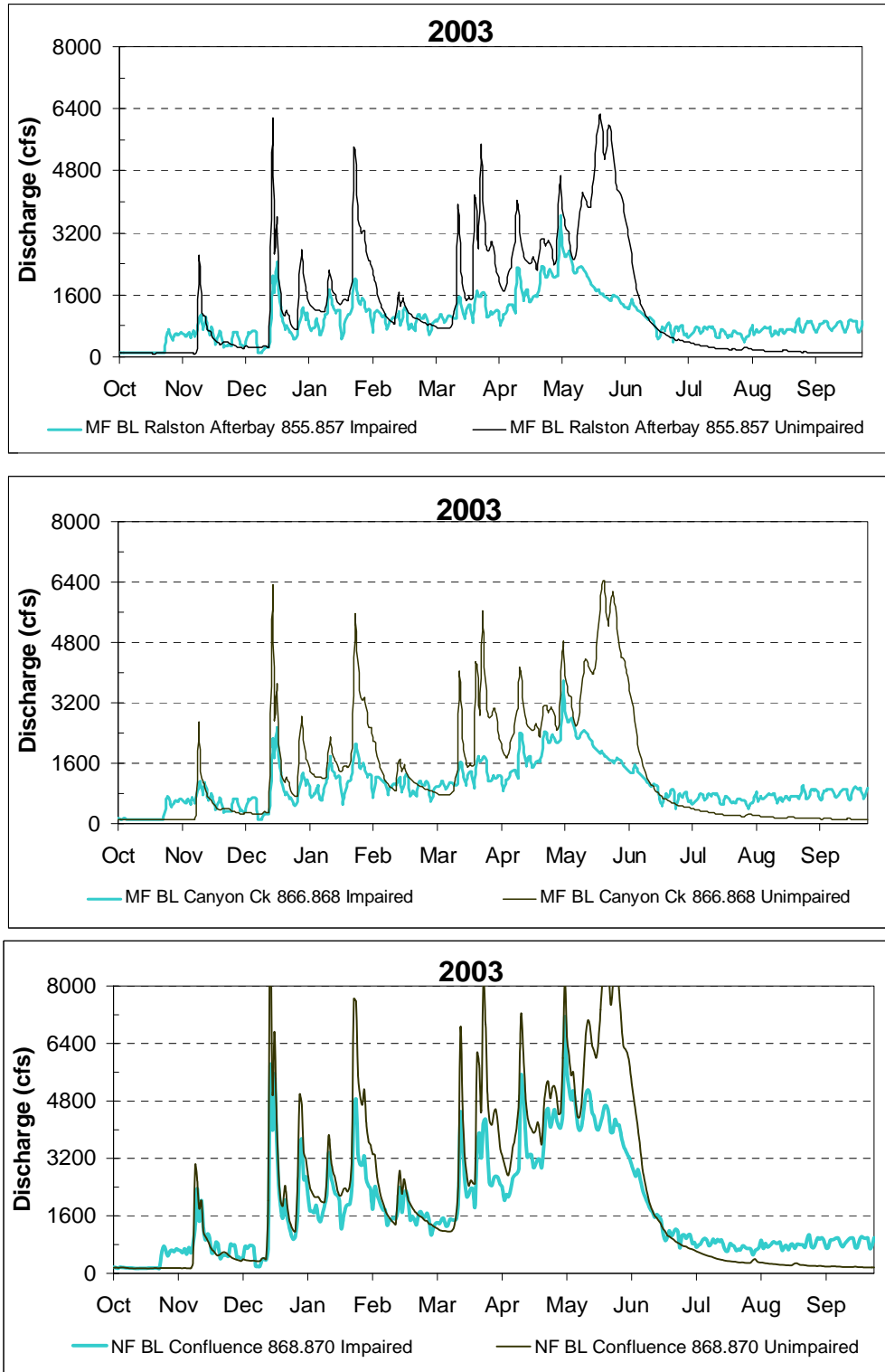
**Figure M-1. Example daily average wet water year (2006) flows in the Middle Fork American River below Ralston Afterbay (top), Middle Fork American River downstream of Canyon Creek (middle), and the North Fork American River below the Middle Fork American River Confluence (bottom).**



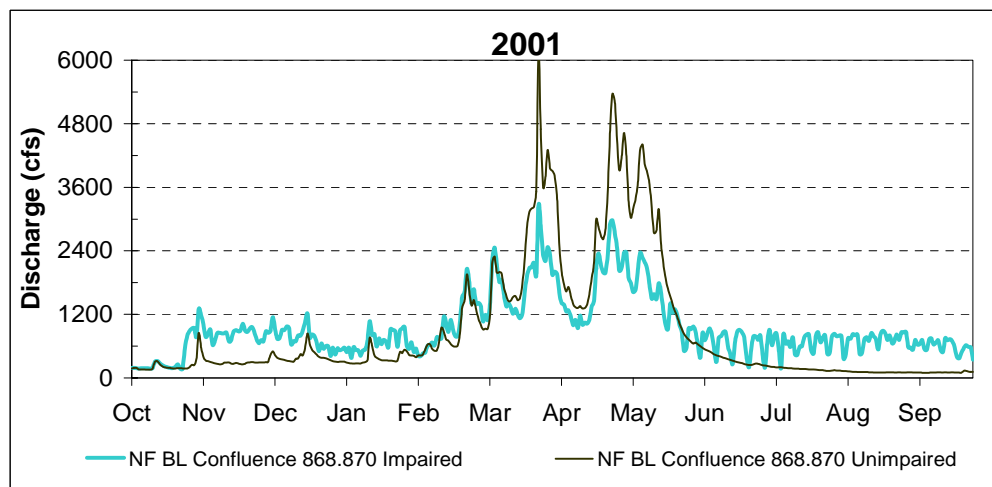
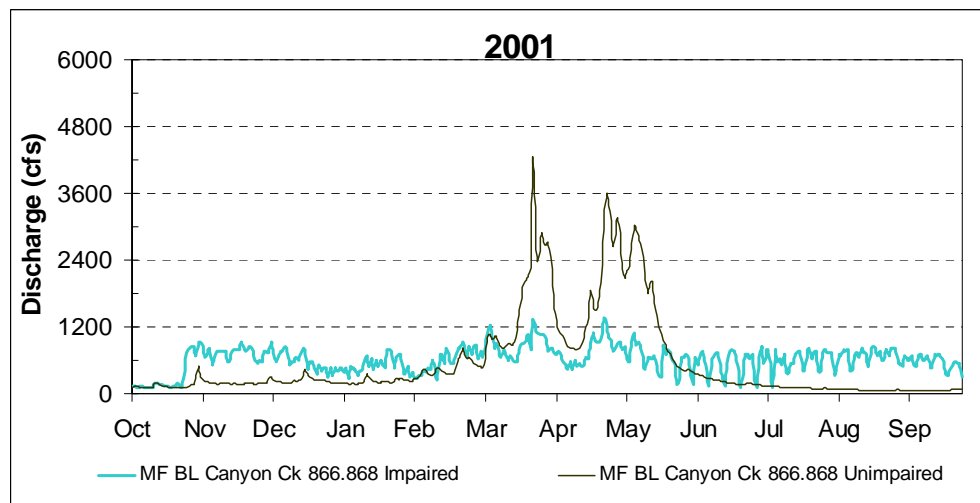
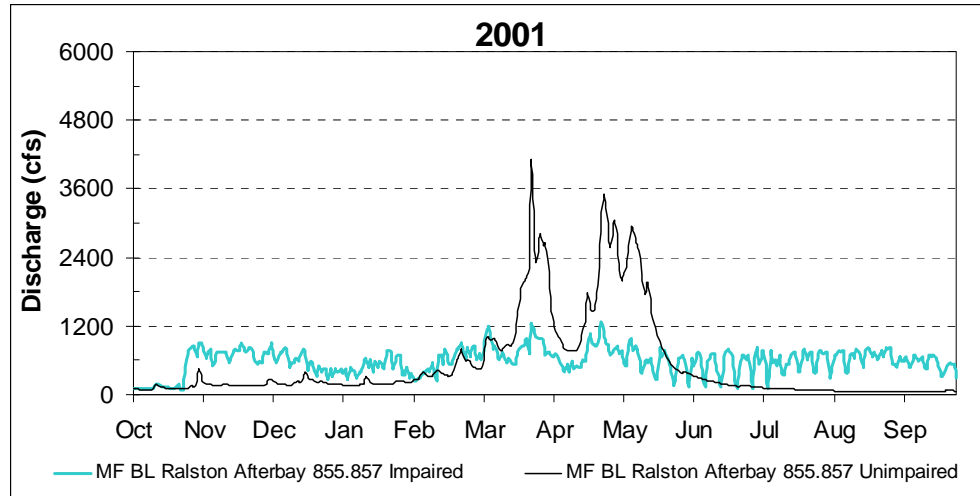
**Figure M-2. Example daily average above normal water year (1999) flows in the Middle Fork American River below Ralston Afterbay (top), Middle Fork American River downstream of Canyon Creek (middle), and the North Fork American River below the Middle Fork American River Confluence (bottom).**



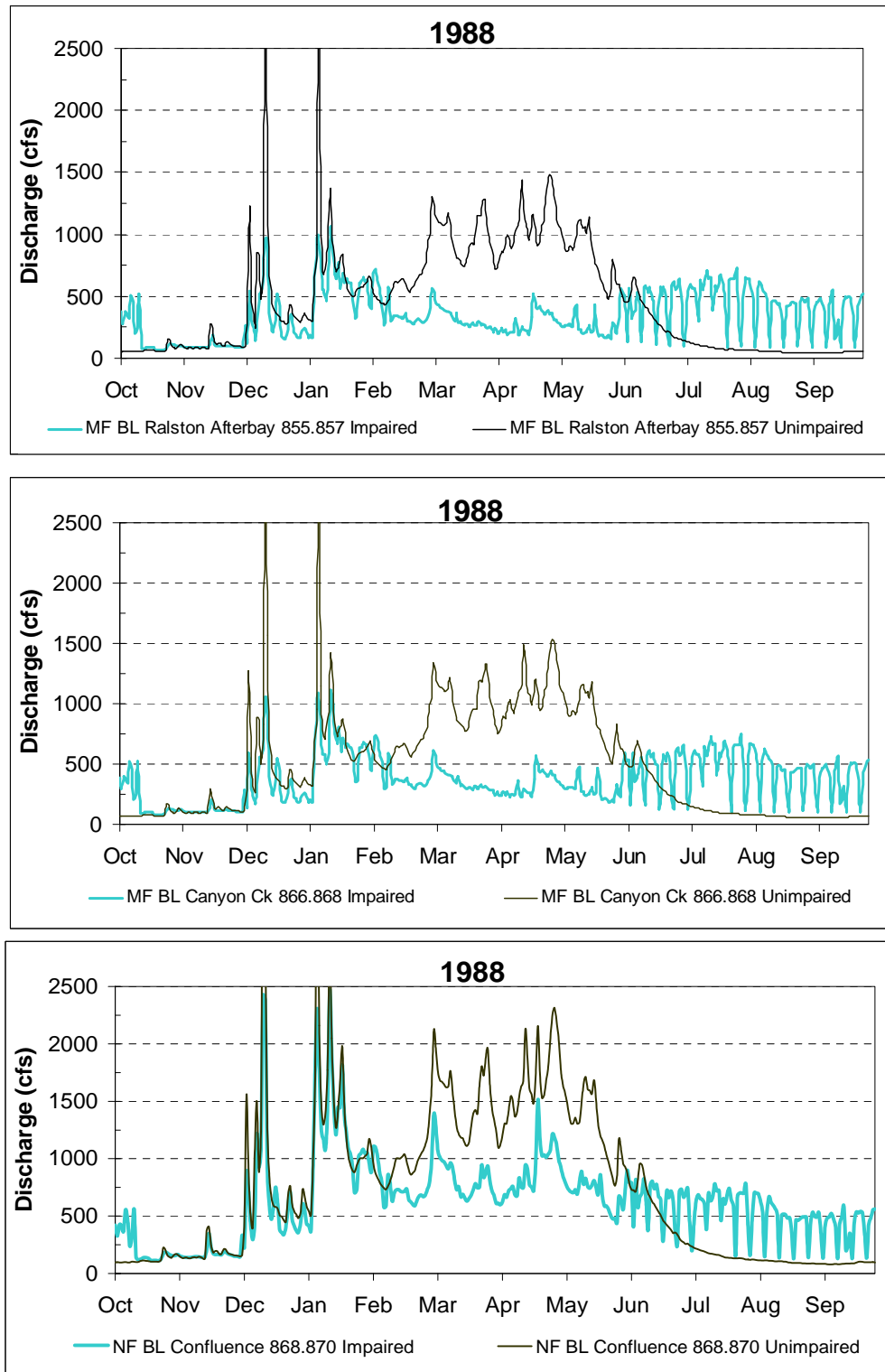
**Figure M-3. Example daily average below water year (2003) flows in the Middle Fork American River below Ralston Afterbay (top), Middle Fork American River downstream of Canyon Creek (middle), and the North Fork American River below the Middle Fork American River Confluence (bottom).**



**Figure M-4. Example daily average dry water year (2001) flows in the Middle Fork American River below Ralston Afterbay (top), Middle Fork American River downstream of Canyon Creek (middle), and the North Fork American River below the Middle Fork American River Confluence (bottom).**



**Figure M-5. Example daily average critical dry water year (1999) flows in the Middle Fork American River below Ralston Afterbay (top), Middle Fork American River downstream of Canyon Creek (middle), and the North Fork American River below the Middle Fork American River Confluence (bottom).**



Note:  
Impaired condition is based on recorded gage data. Unimpaired condition is based on modeled data