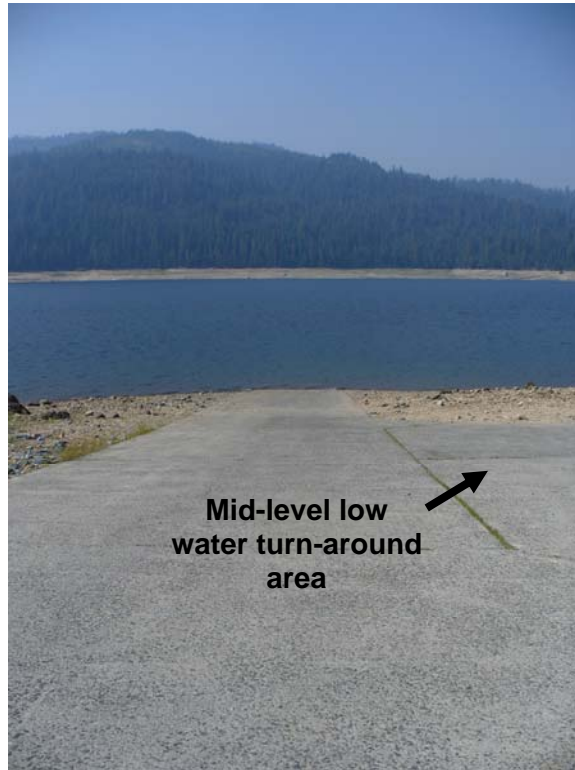


**Appendix O-2**  
**French Meadows Boat Ramp**  
**Photographs**



**Photo O-2-1. French Meadows Boat Ramp on July 23, 2008 (WSE = 5,220 ft).**



**Photo O-2-2. Cracking in-filled with vegetation along French Meadows Boat Ramp, upper section. (7/23/08)**



**Photo O-2-3. Sign at upper end of French Meadows Boat Ramp. Sign is in good condition but paint is flaking. (7/23/08)**



**Photo O-2-4. Temporary sign located in middle low-water turn around area. This sign may be moved as water levels fluctuate. (7/23/08)**

**French Meadows Boat Ramp Parking Area**



**Photo O-2-5. French Meadows Boat Ramp Parking Area. Surface has deteriorated to aggregate base rock. (7/23/08)**



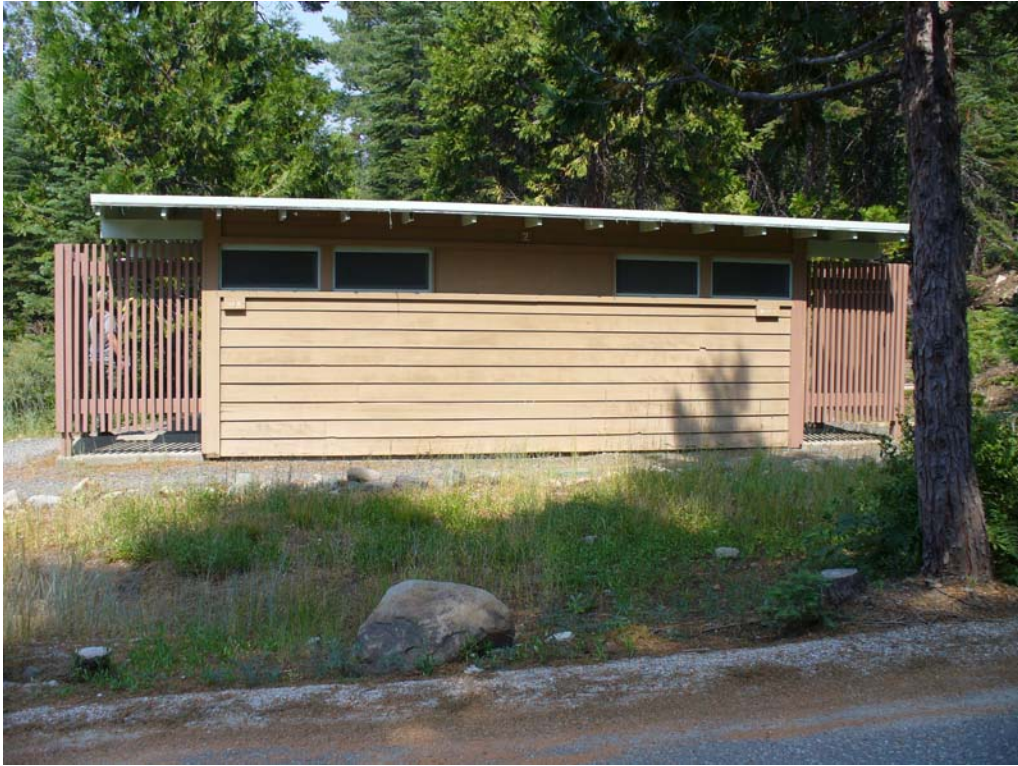
**Photo O-2-6. French Meadows Boat Ramp Parking Area. Note post and cable barrier fence. (7/23/08)**



**Photo O-2-7. Sign at entrance to French Meadows Boat Ramp Parking Area. Sign is in good condition. (7/23/08)**



**Photo O-2-8. Paved road extending from French Meadows Boat Ramp Parking Area to French Meadows Boat Ramp. Note small parking area on left side of road. This area also functions as a high water turn-around at max WSE. (7/23/08)**



**Photo O-2-9. Bathroom located along access road to French Meadows Boat Ramp. This bathroom has flush toilets and sinks but does not meet current USDA-FS condition or accessibility standards. (7/23/08)**



**Photo O-2-10. Information board, bear-proof garbage container, and water faucet located adjacent to bathroom. (7/23/08)**



**Photo O-2-11. Water faucet located adjacent to bathroom. Handle is considered disabled accessible. Approach is not disabled accessible due to insufficient clear space and changes in surface level. (7/23/08)**



**Photo O-2-12. Example of disabled accessible faucet handle.**

**French Meadows Picnic Area**



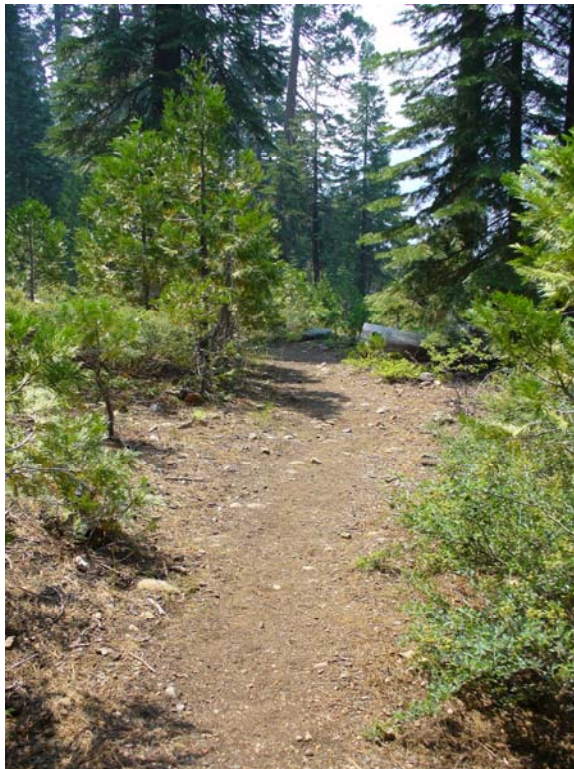
**Photo O-2-13. French Meadows Picnic Area Parking. Parking and roadway surfaces are in good condition. Note Boat Ramp Parking Area in background. (7/23/08)**



**Photo O-2-14. Entrance to French Meadows Picnic Area. (7/23/08)**



**Photo O-2-15. Trail to French Meadows Parking Area. Trail is not considered disable accessible due to obstacles, level changes, excessive slope, and narrow width. (7/23/08)**



**Photo O-2-16. Trail to French Meadows Parking Area. (7/23/08)**



**Photo O-2-17. Two-unit vault toilet located in French Meadows Picnic Area. This toilet does not meet accessibility standards due to narrow entrance width, level changes (e.g., concrete lip) and absence of hand rails. (7/23/08)**



**Photo O-2-18. Water faucet near vault toilet. Does not meet accessibility standards due to handle design, obstacles, and level changes. (7/23/08)**



**Photo O-2-19. Water faucet in picnic area. Does not meet accessibility standards due to handle design and level changes. (7/23/08)**



**Photo O-2-20. Typical picnic site in the French Meadows Picnic Area. Note the pedestal grill and wood picnic table. Neither are disabled accessible. (7/23/09)**