

FEDERAL ENERGY REGULATORY COMMISSION
Washington, DC 20426

DATE: February 11, 2008

MEMORANDUM TO: The Agency/Party Addressed

SUBJECT: Scoping of environmental issues for new licenses for the Middle Fork American River Project, FERC No. 2079; and the French Meadows Transmission Line Project, FERC No. 2479, California.

The Federal Energy Regulatory Commission (Commission) is conducting National Environmental Policy Act (NEPA) scoping on the anticipated license applications for the existing Middle American River Project (FERC No. 2079), located in Northern California on the Middle Fork American River and the French Meadows Transmission Line Project (FERC No. 2479).

The Middle Fork American River Project is located in Placer and El Dorado counties, almost entirely within the Tahoe and El Dorado National Forests. Placer County Water Agency (Placer County), the licensee for the project, filed its Notice of Intent and Pre-Application Document (PAD) on December 13, 2007 and will use the Commission's Integrated Licensing Process (ILP) for the project's licensing. Under the ILP, Placer County must file their preliminary licensing proposal or a draft license application by October 1, 2010; the final license application must be filed with the Commission by February 28, 2011, two years before the license expires.

The French Meadows Transmission Line Project, located in Placer County, is owned by Pacific Gas and Electric Company (PG&E). The project's transmission lines transmit power from the Middle Fork American River Project to PG&E's interconnected transmission facilities. PG&E plans to file its Notice of Intent and PAD by mid-February 2008 and will also use the Commission's ILP process for the project's licensing. PG&E must file their final license application with the Commission by February 28, 2011, two years before the license expires.

Pursuant to NEPA, we intend to prepare an environmental impact statement (EIS) for the projects, which would be used by the Commission to determine whether, and under what conditions, to issue new hydropower licenses for the projects. To support and assist our environmental review, we are beginning the public scoping process to ensure that all pertinent issues are identified and analyzed.

We invite you to participate in the scoping process and are circulating the attached Scoping Document 1 (SD1) to provide you with information on the projects and to ask for comments and suggestions on our preliminary list of issues and alternatives to be addressed in the EIS. Please review this SD1 and, if you wish to provide comments, follow the instructions included in section 5.0 *Request for Information*. Besides our request for information in Section 5.0 of SD1, the Commission's regulations for the ILP require that parties wishing to submit comments on the PAD or staff's SD1, or wishing to request studies, do so within 60 days of the issuance date of SD1.¹

As part of our Scoping process and in an effort to identify issues, concerns, and opportunities associated with the proposed action, we will hold two scoping meetings on March 4, 2008, to receive comments on the scope of the EIS. A daytime meeting, focused on resource agencies, tribes, and non-governmental organizations (NGOs), will begin at 9:00 AM. An evening meeting, primarily for the public, will start at 6:30 PM. Both meetings will be held at the Auburn Recreation District-Canyon View Community Center, located at 471 Maidu Drive in Auburn, California. The public, agencies, Indian tribes and NGOs may attend either or both meetings. More information on the meetings is available in the attached SD1.

A site visit is typically held in conjunction with the scoping meeting. However, because most of the project sites will not be accessible in March, the site visit for the projects is scheduled to take place on June 25, 2008, starting at 8:00 AM. Placer County will provide transportation. Anyone interested in attending the site visit should contact Mal Toy, Project engineer for Placer County, at (530) 823-4889 by June 11, 2008.

Please direct any questions about the licensing of the projects to Jim Fargo at (202) 502-6095, james.fargo@ferc.gov.

enclosure: Scoping Document 1

cc: Placer County Water Agency
144 Ferguson Road
Auburn, CA 95603

Pacific Gas and Electric Company
Power Generation, Mail Code N11C
P.O. Box 770000
San Francisco, CA 94177

Mailing List
Public Files

¹ CFR 18 Section 5.9 *Comments and information or study requests*

SCOPING DOCUMENT 1

MIDDLE FORK AMERICAN RIVER PROJECT
And
FRENCH MEADOWS TRANSMISSION LINE PROJECT
CALIFORNIA

FERC PROJECT Nos. 2079-061 and 2479

Federal Energy Regulatory Commission
Office of Energy Projects
Division of Hydropower Licensing
Washington, DC

February 2008

TABLE OF CONTENTS

1.0 INTRODUCTION	1
2.0 SCOPING	3
2.1 Purposes of Scoping.....	3
2.2 Comments and Scoping Meetings	4
3.0 PROPOSED ACTION AND ALTERNATIVES	6
3.1 Placer County’s Proposed Action	6
3.2 PG&E’s Proposed Action	7
3.3 Staff’s Modification of the Proposed Actions	7
3.4 No Action Alternative.....	8
4.0 SCOPE OF CUMULATIVE ANALYSIS AND RESOURCE ISSUES	8
4.1 Cumulative Effects.....	8
4.1.1 Geographic Scope	8
4.1.2 Temporal Scope	9
4.2 Middle Fork American Project Resource Issues	9
4.2.1 Geology and Soil Resources	9
4.2.2 Water Resources.....	9
4.2.3 Aquatic Resources.....	10
4.2.4 Terrestrial Resources.....	10
4.2.5 Threatened and Endangered Species.....	11
4.2.6 Recreation and Aesthetics	11
4.2.7 Land use	11
4.2.8 Cultural Resources	12
4.2.9 Developmental Resources.....	12
4.3 Proposed Protection, Mitigation, and Enhancement Measures	12
4.4 French Meadows Transmission Line Project Resource Issues	12
4.4.1 Terrestrial Resources.....	13
4.4.2 Threatened and Endangered Species.....	13
4.4.3 Land Use	13
4.4.4 Cultural resources	13
4.5 Proposed Protection, Mitigation and Enhancement Measures	14
5.0 REQUEST FOR INFORMATION	14
6.0 EIS PREPARATION SCHEDULE	15
7.0 EIS OUTLINE	16
8.0 LIST OF COMPREHENSIVE PLANS	18
9.0 MAILING LIST	20
APPENDIX A: PROCESS PLAN AND SCHEDULE	31

1.0 INTRODUCTION

The Federal Energy Regulatory Commission (Commission or FERC), under the authority of the Federal Power Act (FPA),¹ may issue licenses for up to 50 years for the construction, operation, and maintenance of non-federal hydroelectric projects. Placer County Water Agency (Placer County), licensee for the existing Middle Fork American River Project (FERC Project No. 2079), filed a Pre-Application Document and a Notice of Intent to file an application for a new license with the Commission on December 13, 2007. In mid-February, 2008, Pacific Gas and Electric Company (PG&E), licensee for the existing French Meadows transmission Line Project (FERC Project No. 2479), plans to file a Pre-Application Document and a Notice of Intent to file an application for a new license with the Commission.

The Middle Fork American River Project (figure 1) is located on the Middle Fork American River in Placer and El Dorado counties, California. Placer County proposes to continue to operate the 224-MW-hydropower facilities, which now generate an average of 1,030,000 megawatt-hours annually. The Middle Fork American River Project serves as both a water supply and a hydroelectric project. The project is designed to conserve and control waters of the Middle Fork American River, the Rubicon River, and several associated streams. Hydroelectric power from the project is produced at five powerhouses. With a combined gross storage capacity of 342, 583 acre-feet, the two principal storage reservoirs of the project are French Meadows and Hell Hole. We provide a more detailed description of the project in section 3 of this scoping document.

French Meadow Transmission Line Project is located in Placer County. The project consists of three transmission lines: a 60-kv line, about 13.1 miles long, extending from Placer County's French Meadows Powerhouse to Placer County's Middle Fork Powerhouse, a short 230-kV tap from Placer County's Ralston Powerhouse to a junction with PG&E's Middle Fork–Gold Hill 230 kV line, and a short tap from Placer County's Oxbow Powerhouse to a junction with PG&E's Middle Fork No.1 60-kV line.

The National Environmental Policy Act of 1969 (NEPA),² the Commission's regulations, and other applicable laws require that we independently evaluate the environmental effects of the proposed project and reasonable alternatives. Based on a

¹16 U.S.C. §791(a) -825(r).

²National Environmental Policy Act of 1969, as amended (Pub. L. 91-190. 42 U.S.C. 4321-4347, January 1, 1970, as amended by Pub. L. 94-52, July 3, 1975, Pub. L. 94-83, August 9, 1975, and Pub. L. 97-258, §4(b), Sept. 13, 1982).

preliminary analysis of the issues, Commission staff is proposing to prepare an environmental impact statement (EIS) that describes and evaluates the probable effects, including an assessment of the cumulative effects, if any, of the proposed action and alternatives considered. This scoping process will help us to identify the pertinent issues that we will need to analyze in the EIS.

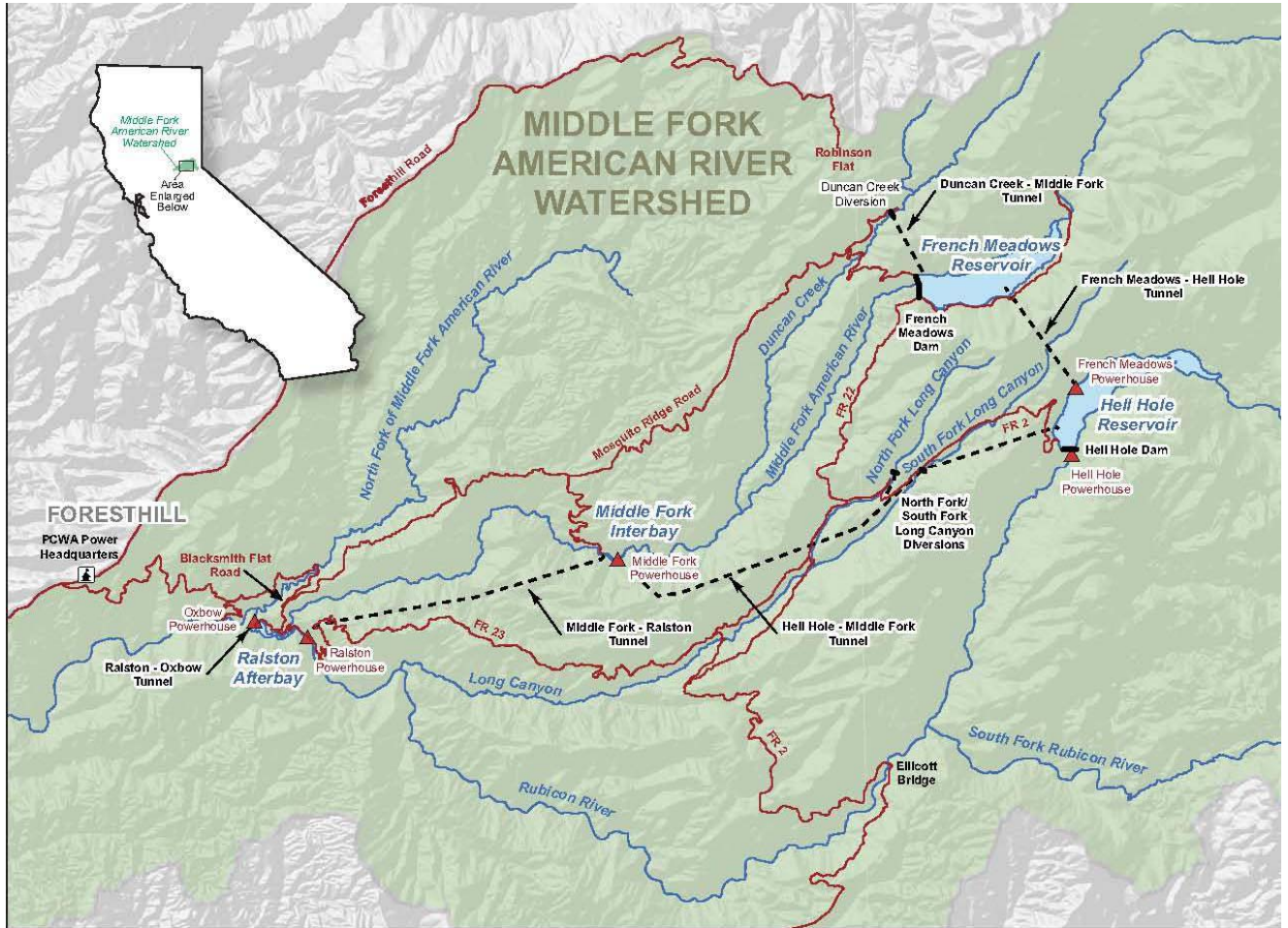


Figure 1 Middle Fork American River Project and Vicinity

2.0 SCOPING

2.1 Purposes of Scoping

Scoping is the process used to identify issues, concerns, and opportunities associated with a proposed action. According to NEPA, scoping should be conducted early in the planning stage of a project. The purposes of scoping are as follows:

- invite federal, state, and local resource agencies, Indian tribes, nongovernmental organizations (NGOs), and interested persons to help us identify significant environmental and socioeconomic issues related to the proposed action;
- determine the depth of analysis and significance of issues to be addressed in the EIS;
- identify how the project would or would not contribute to cumulative impacts in the project area;
- identify reasonable alternatives to the proposed action that should be evaluated in the EIS;
- ask participants for information they have available on the resources at issue; and
- determine the resource areas and potential issues that do not require detailed analysis during review of the project.

2.2 Comments and Scoping Meetings

Between now and the Commission's licensing decision, there will be the following opportunities to comment:

- During the public scoping process and study plan meetings, prior to the preparation of the EIS; so that the Commission staff can receive written comments regarding scope and content
 - In response to the Commission's ready for environmental analysis notice
 - After issuance of the draft EIS.

Besides the written comments we ask for in this SD1, Commission staff will hold two public scoping meetings in the vicinity of the projects. An evening meeting will

focus on the public's views, and a daytime meeting will focus on resource agency concerns. We invite all interested agencies, Indian tribes, NGOs, and individuals to attend one or both of the meetings to assist staff in identifying the scope of environmental issues that should be analyzed in the EIS.

The times and locations of the scoping meetings are as follows:

Daytime Scoping Meeting

Date and Time: Tuesday, March 4, 2008, 9:00 AM

Location: Auburn Recreation District-Canyon View Community Center

Evening Scoping Meeting

Date and Time: Tuesday, March 4, 2008, 6:30 PM

Location: Auburn Recreation District-Canyon View community Center

The licensees and Commission staff have scheduled a visit to the project sites on Wednesday, June 25, 2008, starting at 8:00 AM. All participants should meet at Auburn Recreation District-Canyon View Community Center, located at 471 Maidu Drive, Auburn, California. Placer County Water Agency will provide transportation for participants. Anyone interested in attending the site visit should contact Mr. Mal Toy of Placer county Water Agency at (530) 823-4889 by June 11, 2008.

The scoping meetings will be recorded by a court reporter, and all statements (oral and written) will become part of the Commission's public record for the project. Interested parties who choose not to speak or who are unable to attend any of the scoping meetings may provide written comments and information to the Commission as described in section 5.0. These meetings are posted on the Commission's calendar located on the internet at <http://www.ferc.gov/EventCalendar/EventsList.aspx> along with other related information.

Meeting participants should come prepared to discuss their issues and concerns as they pertain to the projects. To prepare for the scoping meetings, we ask that participants review the Pre-Application Documents (PADs). A copy of the PADs are available for review at the Commission in the Public Reference Room or may be viewed on the Commission's website (<http://www.ferc.gov>), using the "eLibrary" link. Enter the docket number, P-2079, or P-2479, to access the documents. For assistance, contact FERC Online Support at FERCOnlineSupport@ferc.gov or toll free at 1-866-208-3676, or for TTY, (202) 502-8659.

Following the scoping meetings and comment period, all issues raised will be reviewed and decisions will be made about the level of analysis needed. If preliminary analysis shows that any issues presented in this scoping document have little potential for causing significant effects, the issue(s) will be identified and the reasons for not providing a more detailed analysis will be given in the EIS.

If we receive no substantive comments on this Scoping Document 1, then we will not prepare a Scoping Document 2. The EIS will address the major issues identified during the scoping process.

3.0 PROPOSED ACTION AND ALTERNATIVES

In accordance with NEPA, our environmental analysis will consider the following alternatives, at a minimum: (1) the licensees' proposed action, (2) alternatives to the proposed action, and (3) no action.

3.1 Placer County's Proposed Action

The Middle Fork American River Project consists of a series of seven diversions and five powerhouses with a nameplate generating capacity of 223,750 kilowatts (KW). Water from the diversions is controlled and conveyed through seven tunnels. At the end of the system, Project water is released to the Middle Fork American River about 29 miles upstream of Folsom Reservoir.

The Project includes two principal water storage reservoirs, French Meadows and Hell Hole (combined gross storage of 342,583 acre-feet), two limited storage afterbays, Interbay and Ralston (combined storage of 2,959 acre-feet), and three small diversions, Duncan Creek Diversion, North Fork Long Canyon Diversion and South Fork Long Canyon Diversion.

The headwaters of the Middle Fork American River and its tributaries drain into the French Meadows Reservoir. Placer County diverts water stored in French Meadows Reservoir to the Hell Hole Reservoir via the 2.6-mile-long French Meadows-Hell Hole Tunnel. Hell Hole Reservoir also stores water flowing from the upper reaches of the Rubicon River drainage.

Flow from French Meadows to the Hell Hole Reservoir passes through the French Meadows Powerhouse, which has a nameplate capacity of 15,300 KW from a single

generator. The Hell Hole Powerhouse, located at the base of the Hell Hole Dam, generates electricity from fish-flow releases into the Rubicon River, and has a nameplate generating capacity of 725 KW from a single generator.

Water stored in Hell Hole Reservoir is released through the 10.4-mile-long Hell Hole – Middle Fork Tunnel to the Middle Fork Powerhouse, with a nameplate generating capacity of 122,400 KW from two generating units. Middle Fork Powerhouse releases water to Middle Fork Interbay, an afterbay for the Middle Fork Powerhouse and a forebay for the inlet to the Middle Fork-Ralston Tunnel.

Water in the Hell Hole - Middle Fork Tunnel is augmented by diversions from the North and South Forks of Long Canyon Creeks. The 6.7-mile-long, Middle Fork-Ralston Tunnel terminates at the Ralston Powerhouse, with a nameplate electrical generating capacity of 79,200 KW from a single generating unit that discharges to the Ralston Afterbay. Ralston Afterbay supplies water to the Oxbow Tunnel, which leads to the Oxbow Powerhouse at the downstream end of the tunnel. Oxbow powerhouse has a nameplate electrical generating capacity of 6,100 KW from a single generator.

Water from the Oxbow Powerhouse is discharged back to the Middle Fork American River about 29 miles upstream of Folsom Reservoir.

3.2 PG&E's Proposed Action

As we've said, the French Meadows Transmission Line Project consists of three transmission lines: a 60-kv line, about 13.1 miles long, extending from Placer County's French Meadows Powerhouse to Placer County's Middle Fork Powerhouse, a short 230-kV tap from Placer County's Ralston Powerhouse to a junction with PG&E's Middle Fork–Gold Hill 230 kV line, and a short tap from Placer County's Oxbow Powerhouse to a junction with PG&E's Middle Fork No.1 60-kV line.

The applicants anticipate the relicensing process may result in changes to the existing license conditions to further protect and enhance the environmental resources affected by the project. However, the applicants can not determine the type and extent of any such changes until the proposed studies are complete.

3.3 Staff's Modification of the Proposed Actions

Staff will consider and assess all alternative recommendations for operational or facility modifications, as well as protection, mitigation, and enhancement measures identified by the staff, the agencies, Indian tribes, NGOs, and the general public.

3.4 No Action Alternative

Under the no-action alternative, the projects would continue to operate under the existing license conditions. The no action alternative is our baseline to establish environmental conditions for comparison with other alternatives.

4.0 SCOPE OF CUMULATIVE ANALYSIS AND RESOURCE ISSUES

4.1 Cumulative Effects

According to the Council on Environmental Quality's regulations for implementing NEPA (Section 1508.7), a cumulative effect is the impact on the environment which results from the incremental impact of the action when added to other past, present and reasonably foreseeable future actions, regardless of what agency or person undertakes such other actions. Cumulative effects can result from individually minor but collectively significant actions taking place over a period of time, to include hydropower and other land and water development activities.

Based on information in the Pre-Application Documents, agency comments, and preliminary staff analysis, we have not identified any resources as potentially cumulatively affected by the operation and maintenance of the Middle Fork American River Project and the French Meadows Transmission Project. By this document, we are asking for recommendations on resources that may be affected cumulatively.

4.1.1 Geographic Scope

The geographic scope of the analysis defines the physical limits or boundaries of the proposed action's effect on the resources. Because the proposed action would affect the resources differently, the geographic scope for each resource may vary. For any resources that participants recommend we analyze for cumulative effects, we are also asking them to recommend the geographic scope that they think is appropriate.

4.1.2 Temporal Scope

The temporal scope of a cumulative effects analysis includes a discussion of past, present, and future actions and their effects on each resource that could be cumulatively affected. For any resource that we identify as potentially having cumulative effects, our temporal scope will look 30-50 years into the future, based on the potential term of a new license, concentrating on the effect on the resource from reasonably foreseeable future actions. The historical discussion will, by necessity, be limited to the amount of available information for each resource area.

4.2 Middle Fork American Project Resource Issues

Environmental issues and concerns preliminarily identified by the staff are presented below. This identification of issues and concerns is not intended to be exhaustive or final, but is an initial listing of issues we have identified. For convenience, the issues have been listed by resource area. We have not identified significant socio-economic issues associated with relicensing the project.

4.2.1 Geology and Soil Resources

- Effects of land-clearing and ground-disturbing activities during construction and use of recreation facilities on erosion, sedimentation, and slope stability.
- Effects of project operation on river and reservoir shoreline erosion and bank stability.
- Effects of project operations on stream geomorphic processes and features.
- Effects of reservoir level fluctuation on shoreline erosion.

4.2.2 Water Resources

- The potential effects of proposed and alternative flow regimes on water temperature and DO concentrations in the reaches influenced by project operations.
- Effects of project operation on water quality, (including but not limited to: dissolved oxygen, temperature, nutrient loading, suspended sediments, and

turbidity), in the French Meadows and Hell Hole reservoirs, Middle Fork American River, Rubicon River, and affected tributaries.

- The effects of the project and proposed and recommended environmental measures on compliance with applicable state water quality standards and designated beneficial uses.

4.2.3 Aquatic Resources

- Potential effects of project-related changes in streamflow, including minimum instream flows and ramping rates, on aquatic resources in project-affected reaches.
- Potential effects of project-related changes in water quality on aquatic resources in project reservoirs and project-affected reaches.
- The potential effects of project facilities and operations on fish given special status by appropriate resource agencies and appropriate measures to minimize project-related effects.

4.2.4 Terrestrial Resources

- Effects of the inundation of riverine, riparian, wetlands, and upland habitats on wildlife.
- Effects of proposed water level fluctuations on wetland and riparian vegetation along the reservoir shoreline.
- Effects of project operations and maintenance on vegetation in the Middle Fork American Project area, including special-species and noxious/invasive weed species.
- Effects of project operations and maintenance on wildlife.
- Effects of project operations and maintenance on resident and migratory game birds.

- Effects of project operations on wildlife given special status by appropriate resource agencies, including but not limited to: Northern goshawk, California spotted owl, Great gray owl, American marten, osprey, and Pacific fisher.
- Effects of project operations on plant species given special status by appropriate resources agencies, including but not limited to: Pleasant Valley mariposa lily, Red Hills soaproot, Yellow bur navarretia, and Stebbins' phacelia.

4.2.5 Threatened and Endangered Species

- Effects of proposed construction, operation, and environmental measures and project-related human disturbance on federally listed plant species including but not limited to: Webber's mousetail, Layne's ragwort, and Tahoe yellow cress.
- Effects of proposed construction, operation, and environmental measures and project-related human disturbance on federally listed wildlife species including but not limited to: Bald eagle, Pacific fisher, and Valley elderberry longhorn beetle.

4.2.6 Recreation and Aesthetics

- Effects of existing operation and maintenance and proposed improvements on public access and recreational opportunities within the project area.
- Adequacy of existing and proposed public access and recreational facilities within the project area to meet current and future recreational demand.
- Effects of the existing project operation and proposed betterments on the quality and availability of flow-dependent river recreation opportunities, including: whitewater boating, fishing, and swimming.
- Effects of existing project and proposed improvements on aesthetics.

4.2.7 Land use

- Whether the project is consistent with the Tahoe National Forest Land and

Resource Management Plan, the Eldorado National Forest Land and Resource Management Plan, and any other pertinent plans and planning efforts.

- Whether the project would have any effects on the eligibility of wild and scenic river designation for nominated segments of the Rubicon River and the Middle Fork American River.
- Effects of project operations and maintenance on wildfire risk and fire management.
- Effects of project operations and maintenance on land uses adjacent to the FERC project boundary and within the watershed—such as recreation, timber management, and natural resource protection.
- Effects of project operations and maintenance on shoreline buffer zones.

4.2.8 Cultural Resources

- Effects of operation and maintenance of the existing project and the proposed construction and operation of project improvements on historic, archeological, and traditional resources that may be eligible for inclusion in the National Register of Historic Places.

4.2.9 Developmental Resources

- Effects of any recommended environmental measures on the project's economics.

4.3 Proposed Protection, Mitigation, and Enhancement Measures

After review of the findings of the studies Placer County completes and the recommendations of stakeholders, Placer County will consider and propose measures to protect, mitigate, and enhance environmental resources affected by the project.

4.4 **French Meadows Transmission Line Project Resource Issues**

Environmental issues and concerns preliminarily identified by the staff are presented below. This identification of issues and concerns is not intended to be

exhaustive or final, but is an initial listing of issues we have identified. For convenience, the issues have been listed by resource area. We have not identified significant geological, water quality, aquatic or socio-economic issues associated with relicensing the project.

4.4.1 Terrestrial Resources

- Effects of project operations and maintenance in the transmission corridor on botanical resources, wildlife, and raptors.

4.4.2 Threatened and Endangered Species

- Effects of project operations and maintenance in the transmission corridor on federally listed plant species including but not limited to: Webber's mousetail, Layne's ragwort, and Tahoe yellow cress.
- Effects of project operations and maintenance in the transmission corridor on federally listed wildlife species including but not limited to: Bald eagle, Pacific fisher, and Valley elderberry longhorn beetle.

4.4.3 Land Use

- Whether the project as proposed is consistent with the Tahoe National Forest Land and Resource Management Plan, the Eldorado National Forest Land and Resource Management Plan and any other pertinent plans and planning efforts.
- Effects of project operations on wildfire risk and fire management.
- Effects of project operations on land uses adjacent to the FERC project boundary.

4.4.4 Cultural resources

- Effects of operation and maintenance of project on historic, archeological, and traditional resources that may be eligible for inclusion in the National Register of Historic Places.

4.5 Proposed Protection, Mitigation and Enhancement Measures

After review of the studies PG&E completes and the recommendations of stakeholders, PG&E will consider and may propose measures to protect, mitigate and enhance environmental resources affected by the project.

5.0 REQUEST FOR INFORMATION

We are asking federal, state, and local resource agencies, Indian tribes, nongovernmental organizations, and other entities and individuals to forward to the Commission any information that will assist the staff in conducting an accurate and thorough analysis of the site-specific and cumulative effects of licensing the Middle Fork American River Project and the French Meadows Transmission Line Project. Types of information that we seek include, but are not limited to:

- information, quantified data, or professional opinion that may contribute to refining the geographic scope of the analysis, including the analysis of cumulative effects, and identifying significant environmental issues;
- identification of, and information from, any other environmental document or similar study (previous, ongoing, or planned) relevant to the proposed licensing of the projects;
- existing information and any data that would help to describe the past, present and future actions and the effects of the projects and other developmental activities on environmental and socioeconomic resources;
- information that would help characterize the existing environmental conditions and habitats;
- identification of any federal, state, or local agency or Indian tribe resource plans and future project proposals in the affected resource area, such as proposals to construct or operate water treatment facilities, recreation areas, water diversions, timber harvest activities, or fish management programs;
- documentation of cumulative effects of basin-wide activities, including the projects operation, on resources; and

- documentation that would support a conclusion that the projects do or do not contribute to adverse or beneficial effects on resources and should therefore be excluded from further study or included for further consideration of cumulative effects. Documentation should include, but need not be limited to: how the projects interact with other hydropower projects in the area and other developmental and non-developmental activities; results from studies; resource management policies; and reports from federal, state, and local agencies and Indian tribes.

The requested information should be submitted in writing to the Commission no later than April 11, 2008. All filings must clearly identify the following on the first page: Middle Fork American River Project No. 2079-061 or French Meadows Transmission Line Project No. 2479 or both. Address all communications to:

Kimberly D. Bose, Secretary
Federal Energy Regulatory Commission
888 First Street, N.E., Room 1A
Washington, DC 20426

All filings sent to the Secretary of the Commission should contain an original and eight copies. The Commission strongly encourages electronic filings. See 18 CFR 85.2001(a)(1)(iii) and the instructions on the Commission's website (<http://www.ferc.gov>) under the "e-filing" link. For assistance, please contact FERC Online Support at FERCOnlineSupport@ferc.gov or toll-free at 1-(866) 208-3676, or for TTY, (202) 502-8659.

Register online at <http://ferc.gov/esubscribenow.htm> to be notified via e-mail of new filing and issuances related to this or other pending projects. For assistance, contact FERC Online Support.

Any questions concerning scoping or preparation of the EIS for this proposed action should be directed to Jim Fargo at (202)502-6095 or james.fargo@ferc.gov.

6.0 EIS PREPARATION SCHEDULE

At this time we anticipate the need to prepare an EIS (we show our preliminary Outline in chapter 7). We will prepare a draft EIS, which will be sent to all persons and entities on the Commission's service and mailing lists for the Middle Fork American

River Project and the French Meadows Transmission Line Project. The draft EIS will include recommendations for operating procedures, and environmental protection, mitigation and enhancement measures that should be part of any licenses issued by the Commission. Recipients will then have 60 days to provide the Commission with written comments on the draft EIS. All comments on the draft EIS filed with the Commission will be considered in the Commission’s decision on the license applications.

Appendix A contains the Process Plan and schedule for pre-application activity. Our preliminary schedule for processing the license applications is as follows:

ACTION	TARGET DATE
Scoping Meeting	March 2008
License Application Filed	February 2011
Issue Ready for Environmental Analysis Notice	April 2011
Deadline for Filing Preliminary Agency Recommendations	June 2011
Draft EIS Issued	December 2011
Deadline for Filing Modified Agency Recommendations	February 2012
Final EIS Issued	May 2012

7.0 EIS OUTLINE

The preliminary outline for the EIS is as follows:

COVER SHEET
 FOREWORD
 TABLE OF CONTENTS
 LIST OF APPENDICES
 LIST OF FIGURES
 LIST OF TABLES
 ACRONYMS AND ABBREVIATIONS
 EXECUTIVE SUMMARY

1. INTRODUCTION
 - 1.1. Application
 - 1.2. Purpose of Action and Need for Power
 - 1.3. Statutory and Regulatory Requirements
 - 1.3.1. Federal Power Act
 - 1.3.1.1. Section 18 Fishway Prescriptions
 - 1.3.1.2. Section 4(e) Conditions
 - 1.3.1.3. Section 10(j) Conditions
 - 1.3.2. Clean Water Act
 - 1.3.3. Endangered Species Act
 - 1.3.4. National Historic Preservation Act
 - 1.4. Public Review and Comment

- 1.4.1. Scoping
- 1.4.2. Interventions
- 1.4.3. Comments on the Application
- 1.4.4. Comments on Draft EIS
- 2. PROPOSED ACTION AND ALTERNATIVES
 - 2.1. No-action Alternative
 - 2.1.1. Existing Project Facilities
 - 2.1.2. Current Project Operation
 - 2.1.2. Current Environmental Measures
 - 2.2. Applicant's Proposal
 - 2.2.1. Proposed Project Facilities
 - 2.2.2. Project Safety
 - 2.2.3. Proposed Project Operation
 - 2.2.4. Proposed Environmental Measures
 - 2.2.5. Modifications to Applicant's Proposal—Mandatory Conditions
 - 2.3. Staff Alternative
 - 2.4. Other Alternatives (as appropriate)
 - 2.5. Alternatives Considered but Eliminated from Detailed Study
 - 2.5.1. Federal Government Takeover of the Project
 - 2.5.2. Issuing a Nonpower License
 - 2.5.3. Retiring the Project
- 3. ENVIRONMENTAL ANALYSIS
 - 3.1. General Description of the River Basin
 - 3.2. Scope of Cumulative Effects Analysis
 - 3.2.1. Geographic Scope
 - 3.2.2. Temporal Scope
 - 3.3. Proposed Action and Action Alternatives
 - 3.3.1. Geologic and Soil Resources
 - 3.3.2. Aquatic Resources
 - 3.3.3. Terrestrial Resources
 - 3.3.4. Threatened and Endangered Species
 - 3.3.5. Recreation and Land Use
 - 3.3.6. Cultural Resources
 - 3.3.7. Aesthetic Resources
 - 3.3.8. Socioeconomics
 - 3.4. No-action Alternative
- 4. DEVELOPMENTAL ANALYSIS
 - 4.1. Power and Economic Benefits of the Project
 - 4.2. Cost of Environmental Measures
 - 4.3. Comparison of Alternatives
- 5. CONCLUSIONS AND RECOMMENDATIONS
 - 5.1. Comparison of Effects of Proposed Action and Alternatives
 - 5.2. Comprehensive Development and Recommended Alternative
 - 5.3. Unavoidable Adverse Effects
 - 5.4. Recommendations of Fish and Wildlife Agencies
 - 5.5. Consistency with Comprehensive Plans
- 6. LITERATURE CITED
- 7. LIST OF PREPARERS
- 8. LIST OF RECIPIENTS

APPENDICES

8.0 LIST OF COMPREHENSIVE PLANS

Section 10(a)(2) of the FPA requires us to consider whether or not, and under what conditions, relicensing the project would be consistent with relevant comprehensive plans on the Commission's Comprehensive Plan List. The plans that we consider to be relevant to this project are listed below. We ask agencies to review this list and to inform FERC of if any changes are needed. If there are plans that should be added to the list, agencies should file the plans according to 18 CFR 2.19

- California Advisory Committee on Salmon and Steelhead Trout. 1988. Restoring the balance: 1988 annual report. Sausalito, California. 84 pp.
- California Department of Fish and Game. 1979. Rubicon River wild trout management plan. Sacramento, California. July 1979. 46 pp
- California Department of Fish and Game. 1979. South Fork Merced River wild trout management plan. Sacramento, California. July 1979. 26 pp.
- California Department of Fish and Game. 1979. Nelson Creek wild trout management plan. Sacramento, California. July 1979. 27 pp.
- California Department of Fish and Game. 1981. Yellow Creek wild trout management plan. Sacramento, California. August 1981. 18 pp. and appendix.
- California Department of Fish and Game, U.S. Fish and Wildlife Service, National Marine Fisheries Service, and Bureau of Reclamation. 1988. Cooperative agreement to implement actions to benefit winter-run Chinook salmon in the Sacramento River Basin. Sacramento, California. May 20, 1988. 10 pp. and exhibit.
- California Department of Fish and Game. 1990. Central Valley salmon and steelhead restoration and enhancement plan. Sacramento, California. April 1990. 115 pp.
- California Department of Fish and Game. 1993. Restoring Central Valley streams: A plan for action. Sacramento, California. November 1993. 129 pp.

- California Department of Fish and Game. 1996. Steelhead restoration and management plan for California. February 1996. 234 pp.
- California Department of Parks and Recreation. 1998. Public opinions and attitudes on outdoor recreation in California. Sacramento, California. March 1998.
- California Department of Parks and Recreation. 1980. Recreation outlook in Planning District 2. Sacramento, California. April 1980. 88 pp.
- California Department of Parks and Recreation. 1980. Recreation outlook in Planning District 3. Sacramento, California. June 1980. 82 pp.
- California Department of Parks and Recreation. 1994. California outdoor recreation plan, 1993. Sacramento, California. April 1994. 154 pp. and appendices.
- California Department of Water Resources. 1983. The California water plan: Projected use and available water supplies to 2010. Bulletin 160–83. Sacramento, California. December 1983. 268 pp. and attachments.
- California Department of Water Resources. 1994. California water plan update. Bulletin 160–93. Sacramento, California. October 1994. Two volumes and executive summary.
- California Department of Water Resources. 2000. Final programmatic environmental impact statement/environmental impact report for the CALFED Bay-Delta Program. Sacramento, California. July 2000. CD Rom, including associated plans.
- California State Water Resources Control Board. 1975. Water quality control plan report. Sacramento, California. Nine volumes.
- California—The Resources Agency. Department of Parks and Recreation. 1983. Recreation needs in California. Sacramento, California. March 1983. 39 pp. and appendices.
- California—The Resources Agency. 1989. Upper Sacramento River fisheries and riparian habitat management plan. Sacramento, California. January 1989.

- Forest Service. 1988. Eldorado National Forest land and resource management plan. U.S. Department of Agriculture, Forest Service, Placerville, California. December 1988. 752 pp.
- State Water Resources Control Board. 1999. Water quality control plans and policies adopted as part of the state comprehensive plan. April 1999.
- U.S. Fish and Wildlife Service, California Department of Fish and Game, California Waterfowl Association, and Ducks Unlimited. 1990. Central Valley habitat joint venture implementation plan: A component of the North American waterfowl management plan. Department of the Interior, Portland, Oregon. February 1990.
- U.S. Fish and Wildlife Service. 2001. Final restoration plan for the anadromous fish restoration program. Department of the Interior, Sacramento, California. January 9, 2001.

9.0 MAILING LIST

Parties from FERC Service and Mailing List

Mobil Natural Gas, Inc.
12450 Greenspoint Drive
Houston, TX 77060-1905

Pacific Gas & Electric Company
Louis E. Vincent
P.O. Box 7442
San Francisco, CA 94120-7442

Placer County Water Agency
David A. Breninger
General Manager
P.O. Box 6570
Auburn, CA 95604-6570

Placer County Water Agency
Board of Directors
Chairman
P.O. Box 667
Foresthill, CA 95631-0667

Placer County Water Agency
Stephen Jones
Manager
P.O. Box 667
Foresthill, CA 95631-0667

Dave Steindorf
CA Stewardship Director
American Whitewater
4 Beroni Dr
Chico, CA 95928

Parties from FERC Service and Mailing List

Director

Bonneville Power Administration
PO Box 3621
Portland, Washington 97208-3621

Chief

California Dept. of Parks and Recreation
PO Box 942896
Sacramento, California 94296-0001

Matthew R Campbell

California Office of Attorney General
1300 I St # 125
Sacramento, California 95814-2919

Secretary

California Public Utilities Commission
505 Van Ness Ave
San Francisco, California 94102-3214

Chairman

Columbia River Gorge Commission
PO Box 730
White Salmon, Washington 98672-0730

Donald E Kempf

Environmental Specialist
Stillaguamish Tribe
PO Box 277
Arlington, Washington 98223-0277

US Bureau of Indian Affairs

2800 Cottage Way
Sacramento, California 95825-1846

US Bureau of Land Management

California State Office
2800 Cottage Way Ste W1834
Sacramento, California 95825-1886

California Air Resources Board

PO Box 2815
Sacramento, California 95812-2815

Atty. General

California Office of Attorney General
300 S Spring St Fl 2
Los Angeles, California 90013-1230

Cherilyn E Widell

Director
California Office of Historic Preservation
1416 9th St
Sacramento, California 95814

California State Lands Commission

Suite 100-South
100 Howe Ave
Sacramento, California 95825-8202

Donn Furman

Committee to Save the Kings River
1390 Market Street, Suite 418
San Francisco, California 94102

Maria Cantwell

Honorable
United States Senate
Washington, Washington 20515-0001

District Chief-US Geological Survey

Placer Hall
6000 J St.
Sacramento, California 95819

Commander

US Army Corps of Engineers
San Francisco District Office
1455 Market St, #1760
San Francisco, CALIFORNIA 94103

Placer County Outreach Federal Government/Representatives

National Marine Fisheries Service

501 W Ocean Blvd Ste 4200
Long Beach, California 90802-4221

National Marine Fisheries Service

Habitat Manager
777 Sonoma Avenue, Rm. 325

Parties from FERC Service and Mailing List

Santa Rosa, CA 95404

National Oceanic and Atmospheric Administration - Fisheries

Eric Theiss
650 Capitol Mall, Suite 8300
Sacramento, CA 95814

National Park Service

Stephen Bowes
CA Hydro Program Wild & Scenic Rivers Coordinator
1111 Jackson Street, Suite 700
Oakland, CA 94607

Natural Resource Conservation Service

Vern Finney
251 Auburn Ravine Rd, Suite 106
Auburn, CA 95603-3719

US Army Corps of Engineers

Patrick Dwyer
Civil Works Office
1325 J Street
Sacramento, CA 95814-2928

US Bureau of Land Management

William Haigh
63 Natoma Street
Folsom, CA 95630

US Bureau of Land Management

Deane Swickard
63 Natoma Street
Folsom, CA 95630

US Bureau of Reclamation

Regional Director
2800 Cottage Way, Suite W-2605
Sacramento, CA 95825-1846

US Environmental Protection Agency

Region 9 (AZ, CA, HI, NV)
75 Hawthorne Street
San Francisco, CA 94105

Placer County Outreach Federal Government/Representatives (continued)

US Fish and Wildlife Service

Amy Fesnock
Senior Fish and Wildlife Biologist
Endangered Species Division
2800 Cottage Way, Suite W-2605
Sacramento, CA 95825

US Fish and Wildlife Service

William Foster
2800 Cottage Way
Room W-2605
Sacramento, CA 95825-1846

US Forest Service - El Dorado National Forest

Katy Coulter
100 Forni Road
Placerville, CA 95667

US Forest Service - El Dorado National Forest

Krista Deal
Heritage Specialist
7887 Hwy. 50
Pollock Pines, CA 95726

US Forest Service - El Dorado National Forest

Millard Dorit
Georgetown Ranger District
7600 Wentworth Springs Road
Georgetown, CA 95634

US Forest Service - El Dorado National Forest

Vicki Jowise
100 Forni Road
Placerville, CA 95667

US Forest Service - El Dorado National Forest

Jon Jue
7600 Wentworth Springs Rd
Georgetown, CA 95634

US Forest Service - El Dorado National Forest

Tom Koler
100 Forni Road
Placerville, CA 95667

US Forest Service - El Dorado National Forest

Dawn Lipton
100 Forni Road
Placerville, CA 95667

US Forest Service - El Dorado National Forest

Lester Lubetkin
100 Forni Road
Placerville, CA 95667

US Forest Service - El Dorado National Forest

Beth Paulson
100 Forni Road
Placerville, CA 95667

US Forest Service - El Dorado National Forest

Mike Taylor
100 Forni Road
Placerville, CA 95667

US Forest Service - El Dorado National Forest

Terry Tenley
100 Forni Road
Placerville, CA 95667

US Forest Service - El Dorado National Forest

Patricia Trimble
Georgetown Ranger District
7600 Wentworth Springs Road
Georgetown, CA 95634

US Forest Service - El Dorado National Forest

Janelle Walker
7600 Wentworth Springs Rd
Georgetown, CA 95634

US Forest Service - El Dorado National Forest

Jann Williams
100 Forni Road
Placerville, CA 95667

Placer County Outreach Federal Government/Representatives (continued)

US Forest Service - Region 5 - Regional

Dennis Smith
Regional Hydropower Assistance Team (RHAT)
650 Capitol Mall, Suite 8-200
Sacramento, CA 95814

US Forest Service - Region 5 - Regional

Julie Tupper
Regional Hydropower Assistance Team (RHAT)
650 Capitol Mall, Suite 8-200
Sacramento, CA 95814

US Forest Service - Tahoe National Forest

John Babin
Supervisor's Office
631 Coyote Street
Nevada City, CA 95959

US Forest Service - Tahoe National Forest

Greg Connick
22830 Foresthill Road
Foresthill, CA 95631

US Forest Service - Tahoe National Forest

Katie Crews
22830 Foresthill Road
Foresthill, CA 95631

US Forest Service - Tahoe National Forest

Jan Cutts
American River Ranger District
22830 Foresthill Road
Foresthill, CA 95631

US Forest Service - Tahoe National Forest

William Davis
22830 Foresthill Road
Foresthill, CA 95631

US Forest Service - Tahoe National Forest

Donna Day
631 Coyote Street
Nevada City, CA 95959

US Forest Service - Tahoe National Forest

Steve Eubanks
Forest Supervisor
631 Coyote St.
Nevada City, CA 95959-2250

US Forest Service - Tahoe National Forest

Scott Husmann
22830 Foresthill Road
Foresthill, CA 95631

US Forest Service - Tahoe National Forest

Bonnie Pettitt
22830 Foresthill Road
Foresthill, CA 95631

US Forest Service - Tahoe National Forest

Carrie Smith
9646 Donner Pass Road
Truckee, CA 96161-2949

US Forest Service - Tahoe National Forest

Nolan Smith
22830 Foresthill Road
Foresthill, CA 95631

US Forest Service - Tahoe National Forest

Dan Teater
American River Ranger District
22830 Foresthill Road
Foresthill, CA 95631

US Forest Service - Tahoe National Forest

Mo Tebbe
American River Ranger District
22830 Foresthill Road
Foresthill, CA 95631

US Forest Service - Tahoe National Forest

Matt Triggs
American River Ranger District
22830 Foresthill Road
Foresthill, CA 95631

Placer County Outreach Federal Government/Representatives (continued)

US Forest Service - Tahoe National Forest

Rick Weaver
Supervisor's Office
631 Coyote Street
Nevada City, CA 95959

US Forest Service - Tahoe National Forest

Marc Wolburn
American River Ranger District
22830 Foresthill Road
Foresthill, CA 95631

US House of Representatives

John Doolittle
Granite Bay, CA Office
4230 Douglas Blvd.
Suite 200
Granite Bay, CA, 95746

US Senate

Barbara Boxer
501 I Street, Suite 7-600
Sacramento, CA 95814

US Senate

Dianne Feinstein
One Post Street, Suite 2450
San Francisco, CA 94104

Outreach State Government/Representatives

California Department of Fish and Game

Robert Hughes
830 S Street
Sacramento, CA 95814

California Department of Fish and Game

Stafford Lehr
1701 Nimbus Road
Rancho Cordova, CA 95670

California Department of Fish and Game

MaryLisa Lynch
1701 Nimbus Road
Rancho Cordova, CA 95670

California Department of Fish and Game

Beth Lawson
1701 Nimbus Road
Rancho Cordova, CA 95670

California State Parks

Bill Deitchman
501 El Dorado St
Auburn, CA 95603

California State Parks - Auburn State Recreation Area (ASRA)

Jay Galloway
501 El Dorado St
Auburn, CA 95603

California State Parks - Folsom State Park

Jim Michaels
Recreation Area
7806 Folsom Auburn Road
Folsom, CA 95630

Sam Aanestad

State Senator
200 Providence Mine, #108
Nevada City, CA 95959

Dave Cox

State Senator
2140 Professional Drive, Suite 140
Roseville, CA 95661

Ted Gaines

State Assemblyman
1700 Eureka Road, Suite 160
Roseville, CA 95661

Outreach State Government/Representatives

State Water Resources Control Board

Camilla Williams
Division of Water Rights
PO Box 2000
Sacramento, CA 95812-2000

State Water Resources Control Board

Russ Kanz
Division of Water Rights
PO Box 2000
Sacramento, CA 95812-2000

Outreach Local Government

Auburn Area Recreation & Park District

Kahl Muscott
123 Recreation Drive
Auburn, CA 95603

City of Auburn

Robert Richardson
City Manager
1225 Lincoln Way
Auburn, CA 95603

City of Colfax

Joan Phillippe
City Manager
PO Box 702
Colfax, CA 95713

City of Lincoln

Gerald Johnson
City Manager
640 Fifth Street
Lincoln, CA 95648

City of Roseville

W. Craig Robinson
City Manager
311 Vernon Street,
Roseville, CA 95678

County of Placer

County Executive Office
Brett Storey
175 Fulweiler Ave
Auburn, CA 95603

El Dorado Board of Supervisors

Cindy Keck
Clerk to the Board
330 Fair LN
Placerville, CA 95667

Foresthill Forum

Larry Jordan
PO Box 207
Foresthill, CA 95631

Foresthill Municipal Advisory Committee

P. O. Box 207
Foresthill, CA 95631

Town of Loomis

Perry Beck
City Manager
6140 Horseshoe Bar. Road, Suite K
Loomis, CA 95650

Outreach Public Agency

El Dorado County Water Agency

Bill Hetland
330 Fair Lane
Placerville, CA 95667-4103

El Dorado Irrigation District

Cheri Jagers
2890 Mosquito Road
Placerville, CA 95667

Outreach Public Agency

El Dorado Irrigation District

Liz Mansfield
2890 Mosquito Road
Placerville, CA 95667

Georgetown Divide Public Utility District

Henry White
General Manager
P.O. Box 4240
Georgetown, CA 95634

Placer County Resource Conservation District

Rich Gresham
251 Auburn Ravine Road, Ste 105
Auburn, CA 95603

Foresthill Public Utility District

Kurt Reed
General Manager
PO Box 266
Foresthill, CA 95631

Nevada Irrigation District

Ron Nelson
PO Box 1019
Grass Valley, CA 95945-1019

San Juan Water District

Shauna Lorance
General Manager
9935 Auburn-Folsom Road
Granite Bay, CA 95746

Outreach Native American Tribes

Colfax-Todd Valley Consolidated Tribe

LeVina Suehead
P.O. Box 4884
Auburn, CA 95604-4884

Miwok Tribe of the El Dorado Rancheria

Jeri Scambler
Tribal Chairperson
PO Box 1284
El Dorado, CA 95623

Shingle Springs Rancheria

Jeff Murray
P.O. Box 1340
Shingle Springs, CA 95682

Todd Valley Miwok-Maidu Cultural Foundation

Bridget Zellner
P.O. Box 1490
Foresthill, CA 95631

United Auburn Indian Community of the Auburn Rancheria

Shelly McGinnis
Analytical Environmental Services
1801 7th Street, Suite 100
Sacramento, CA 95814

El Dorado County Indian Council

Don Yandell
PO Box 564
El Dorado, CA 95623

Shingle Springs Rancheria

Nicolas Fonseca
P.O. Box 1340
Shingle Springs, CA 95682

Todd Valley Miwok-Maidu Cultural Foundation

Fern Brown
P.O. Box 1490
Foresthill, CA 95631

Tsi-Akim Maidu Tribal Office

Don Ryberg
Chariman
438 Searls Avenue
Nevada City, CA 95959

United Auburn Indian Community of the Auburn Rancheria

Jessica Tavares
Chairperson
575 Menlo Drive #2
Rocklin, CA 95765

Outreach Native American Tribes

United Auburn Indian Community of the Auburn Rancheria

Yolanda Chavez
Analytical Environmental Services
1801 7th Street, Suite 100
Sacramento, CA 95814

Washoe Tribe of Nevada and California

Darrel Cruz
Tribal Historic Preservation Officer
919 Highway 395 South
Gardnerville, NV 89410

Washoe Tribe of Nevada and California

Waldo Walker
Chairman
919 Highway 395 South
Gardnerville, NV 89410

Outreach Non-Governmental Organizations

American River Recreation Association and Sierra Nevada Alliance

Bill Center
PO Box 623
Lotus, CA 95651

Auburn Chamber of Commerce

Rich Johnson
601 Lincoln Way
Auburn, CA 95603

Auburn Flycasters Granite Bay Flycasters

Larry Goodell
PO Box 756
Auburn, CA 95604

Audubon Society

Don Rivenes
711 University Avenue
Sacramento, CA 95825

California Hydropower Reform Coalition

Laura Norlander
2140 Shattuck Ave., Suite 605
Berkeley, CA 94704

California Native Plant Society

Sue Britting
P.O. Box 377
Coloma, CA 95613

California Outdoors

Nate Rangel
PO Box 401
Coloma, CA 95613

California Sportfishing Protection Alliance

Jerry Mensch
1516 9th Street, Suite 401
Sacramento, CA 95814

Canyon Keepers

Jim Ferris
501 El Dorado St
Auburn, CA 95603

Dry Creek Conservancy

Greg Bates
P.O. Box 1311
Roseville, CA 95678

Farm Bureau, Placer County

Jim Bachman
10120 Ophir Road
Newcastle, CA 95658

FlyFishNorCal

Northern California Fly Fishing

Ben Rualo
2 Moraine Court
Hercules, CA 94547

Outreach Non-Governmental Organizations

Foothills Water Network

Julie Leimbach
PO Box 713
Lotus, CA 95651

Granite Bay Flycasters

Heath Wakelee
4120 Douglas Blvd. #306-356
Granite Bay, CA 95746-5936

Loomis Basin Horsemen's Association Association

Patricia Gibbs
5425 Lake Forest Dr
Loomis, CA 95650

Northern California Council, Federation of Fly Fishers

Frank Rinella
8450 Erika Jean Way
Fair Oaks, CA 95628

Pacific Gas & Electric

Kevin Goishi
343 Sacramento Street
Auburn, CA 95603

Pacific Gas & Electric

Attn: Forrest Sullivan
5555 Florin-Perkins Road
Sacramento, CA 95826

Sacramento Municipal Utility District

David Hanson
6201 S St, Sacramento
Sacramento, CA 95817

Sierra Club - Mother Lode Chapter

Allan Eberhart
1414 K Street, Suite 500
Sacramento, CA 95814

Trout Unlimited

Chuck Bonham
California Director
1808B 5th Street
Berkeley, CA 94710

Friends of the River

Ron Stork
915 20th St
Sacramento, CA 95814

Horseshoe Bar Fly Fishing Preserve

Gary Flanagan
8459 Lakeland Drive
Granite Bay, CA 95746

Natural Heritage Institute

Elizabeth Soderstrom
409 Spring Street
Nevada City, CA 95959

Northern California Council, Federation of Fly Fishers

Jim Victorine
4800 Hidden Oaks Lane
Loomis, CA 95650

Pacific Gas & Electric

Steve Pierano
Mail Code N11E
PO Box 70000
San Francisco, CA 94177-0001

Protect American River Canyons

Gary Estes
4135 Eagles Nest
Auburn, CA 95603

Sacramento Municipal Utility District

Jim Shetler
Sacramento Municipal Utility District
6201 S St, Sacramento
Sacramento, CA 95817

Sierra Club-Placer Group

Marilyn Jasper
P. O. Box 7167
Auburn, CA 95604-7167

Upper American River Foundation

Bill Carnazzo
5209 Crestline Drive
Foresthill, CA 95631

Outreach Non-Governmental Organizations

Western States Trail Foundation

Gene Freeland
1216 C High Street
Auburn, CA 95603

Western States Trail Association

Tony Rossman
Counselor
6442 Hillegass Ave
Oakland, CA 94618

Outreach Public

Neil Cochran

5344 Crestline Drive
Foresthill, CA 95631

Cramer Fish Sciences

Bradley J. Cavallo
1119 High St, Suite 2
Auburn, CA 98603

Craig Crouch

5307 Hawkhaven Court
Rocklin, CA 95765

Jones & Associates

Tom Jones
12331 Incline Drive
Auburn, CA 95603

Sierra Pacific Industries

Tim Feller
P.O. Box 496028
Redding, CA 96049-6028

Fred Springer, C.E.

Troutman Sanders LLP
Attorneys at Law
401 Ninth St., NW, Suite 1000
Washington D.C. 20004-2134

APPENDIX A: PROCESS PLAN AND SCHEDULE

Below is the schedule for the Middle Fork American River Project pre-application activity.

Responsible Entity	Pre-Filing Milestone	Date	FERC Regulation
PCWA	Issue Public Notice for NOI/PAD	12/13/07	5.3(d)(2)
PCWA	File NOI/PAD with FERC	12/13/07	5.5, 5.6
FERC	Tribal Meeting		5.7
FERC	Notice of Commencement of Proceeding & SD1		5.8
FERC	Scoping Document 1 issued		5.8(c)
FERC	Scoping and Site Visit	3/4/08	5.8(b)(viii)
All stakeholders	NOI/PAD/SD1 comments due	4/11/08	5.9
FERC	Issue SD2 if needed		5.1
PCWA	File Proposed Study Plan	12/13/07	5.11(a)
All stakeholders	Study Plan Meeting		5.11(e)
All stakeholders	Study Plan Comments due	4/11/08	5.12
PCWA	File Revised Proposed Study Plan		5.13(a)
All stakeholders	Revised Proposed Study Plan Comments due		5.13(b)
FERC	Director's Study Plan Determination	10/27/07	5.13(c)
FS, FWS, CDEP	Any Study Disputes due ¹		5.14(a)
Study D. Panel	Third Panel Member selected		5.14(d)(3)
Study D. Panel	Panel Convenes		5.14(d)
PCWA	Applicant Comments on Study Dispute due		5.14(j)
Study D. Panel	Technical Conference held		5.14(j)
Study D. Panel	Panel Finding Issued		5.14(k)
FERC	Director's Study Dispute Determination		5.14(l)
		Spr/Sum 08	
PCWA	First Study Season		5.15(a)
PCWA	Initial Study Report		5.15(c)(1)
All stakeholders	Initial Study Report Meeting		5.15(c)(2)
PCWA	Initial Study Report Meeting Summary		5.15(c)(3)
All stakeholders	Study Disputes/Request to Modify Study Plan due		5.15(c)(4)
All stakeholders	Responses to Disputes/Study Requests		5.15(c)(5)
FERC	Directors Study Plan Determination		5.15(c)(6)
PCWA	Preliminary Licensing Proposal due	10/1/2010	5.16(a)
All stakeholders	Comments on Preliminary Licensing Proposal		5.16(e)
PCWA	License Application filed	2/28/11	5.17
PCWA	Public Notice of License Application filing	2/28/11	5.17(d)(2)