

PCWA Facilities and Features

- Dam
- Ancillary and Other Facilities
- Powerhouse
- Gage
- Penstock
- Tunnel
- Pipeline
- Gate
- Access Point
- Public Safety Fence
- FERC Boundary
- Water Supply Line (above ground)
- Water Supply Line (buried)
- Project Power and Communication Lines:**
 - Communication
 - Power
 - Power (underground)
 - Communication/Power
 - Communication/Power (underground)

Transportation

- Non-Project General Access Road
- Project Road
- Project Trail
- Recreation Access Road
- Recreation Water Supply Facility Access Road or Trail
- Temporary Road Associated with Potential Project Betterments
- Permanent Road Associated with Potential Project Betterments
- Other Road

Project Recreation Facilities

- Picnic Area
- Boat Ramp
- Scenic Viewpoint
- Developed Campground
- Recreation Facility Footprints

Other Facilities

PG & E Transmission Lines:

- 230 kV
- 60 kV

Potential Betterments Features*

- Construction Staging or Work Areas

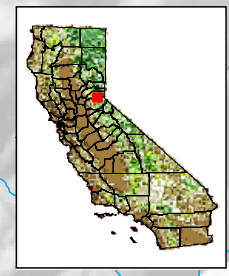
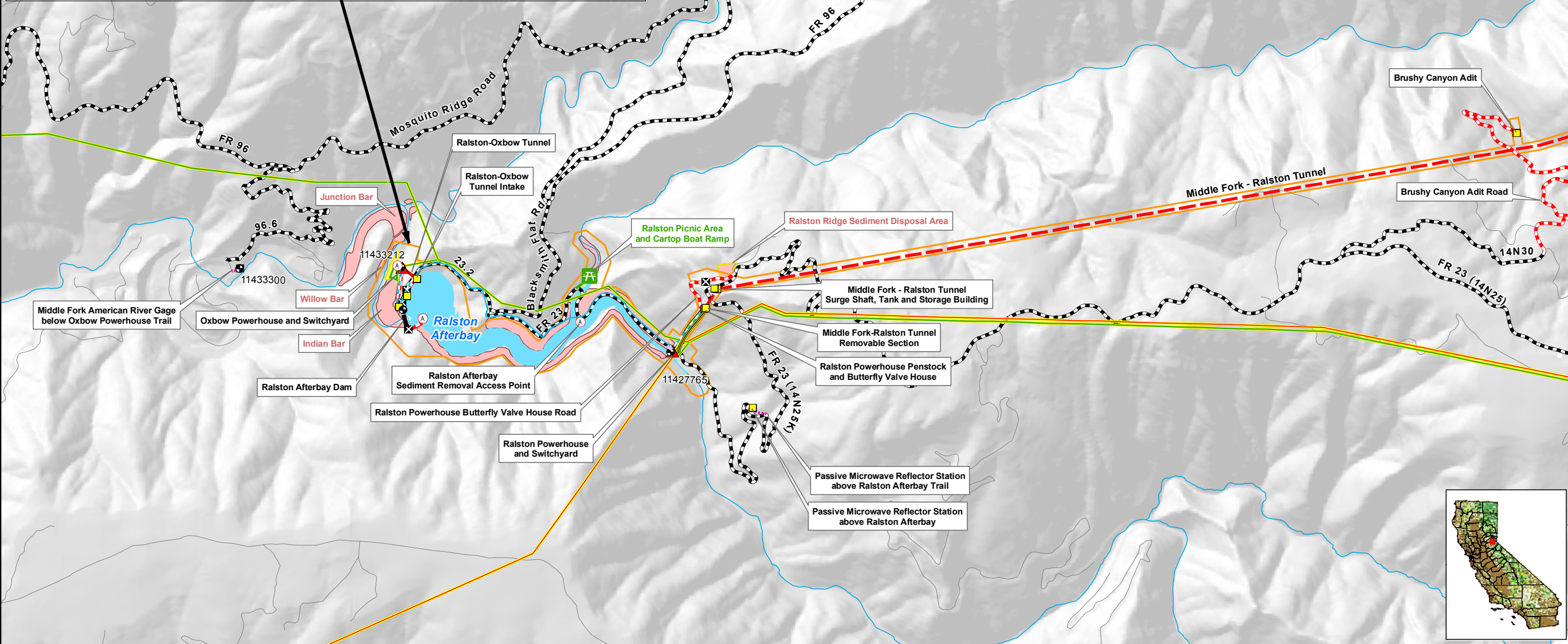
* The proposed Project betterments are currently under review. The final configuration will be provided to the stakeholders and included in the Final Technical Study Plans

Designated Boundary

- Special Area

Facilities and Dispersed Recreation Areas Identified by Stakeholders

- Recreation Access OHV Road
- Recreation Access Trail
- Trailhead
- Dispersed Concentrated Use Area
- Parking Area



Placer County Water Agency
Middle Fork American River Project

MAP LAND 1-1
Sheet 5 of 5
Ralston, Oxbow Area

0 0.25 0.5 Miles
Projection: Ca. Stateplane, Zone 2
Datum: NAD 83
Date: 11/26/07