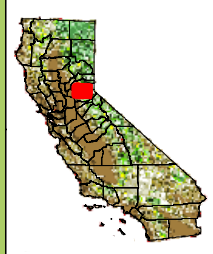
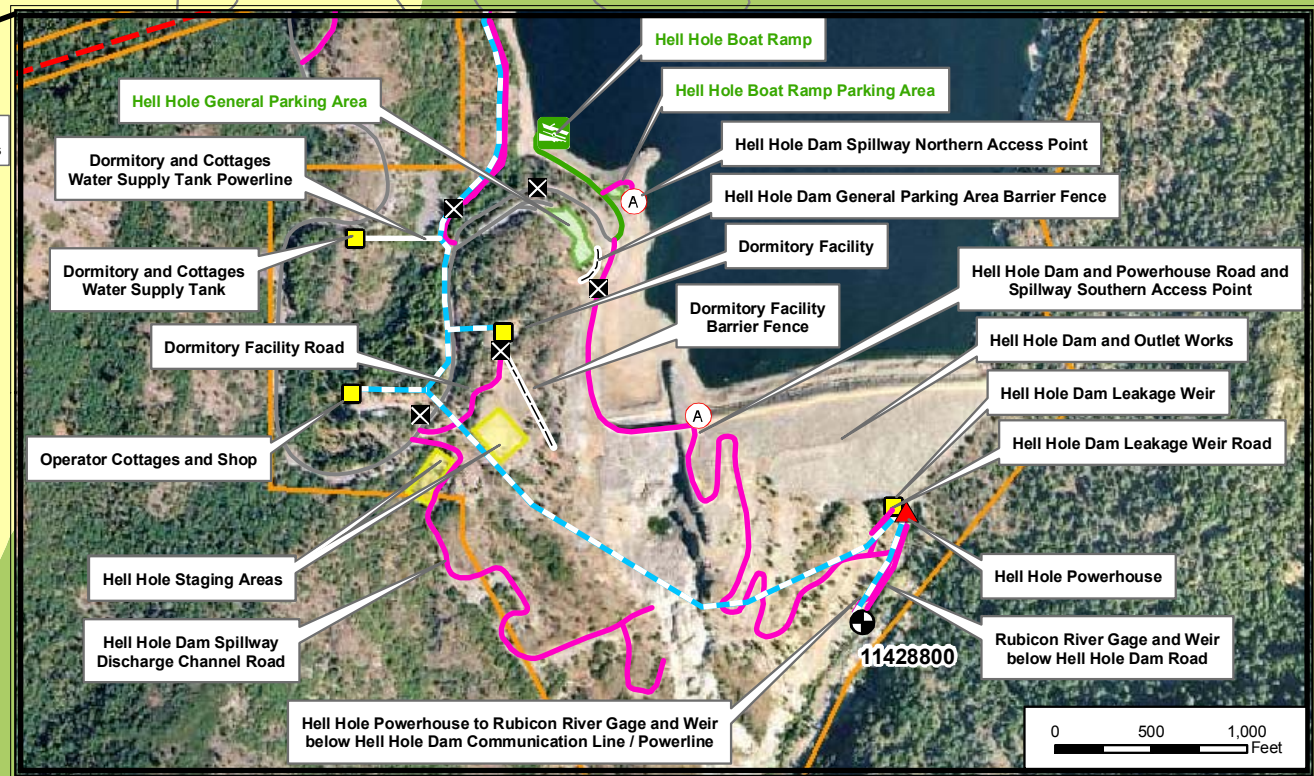
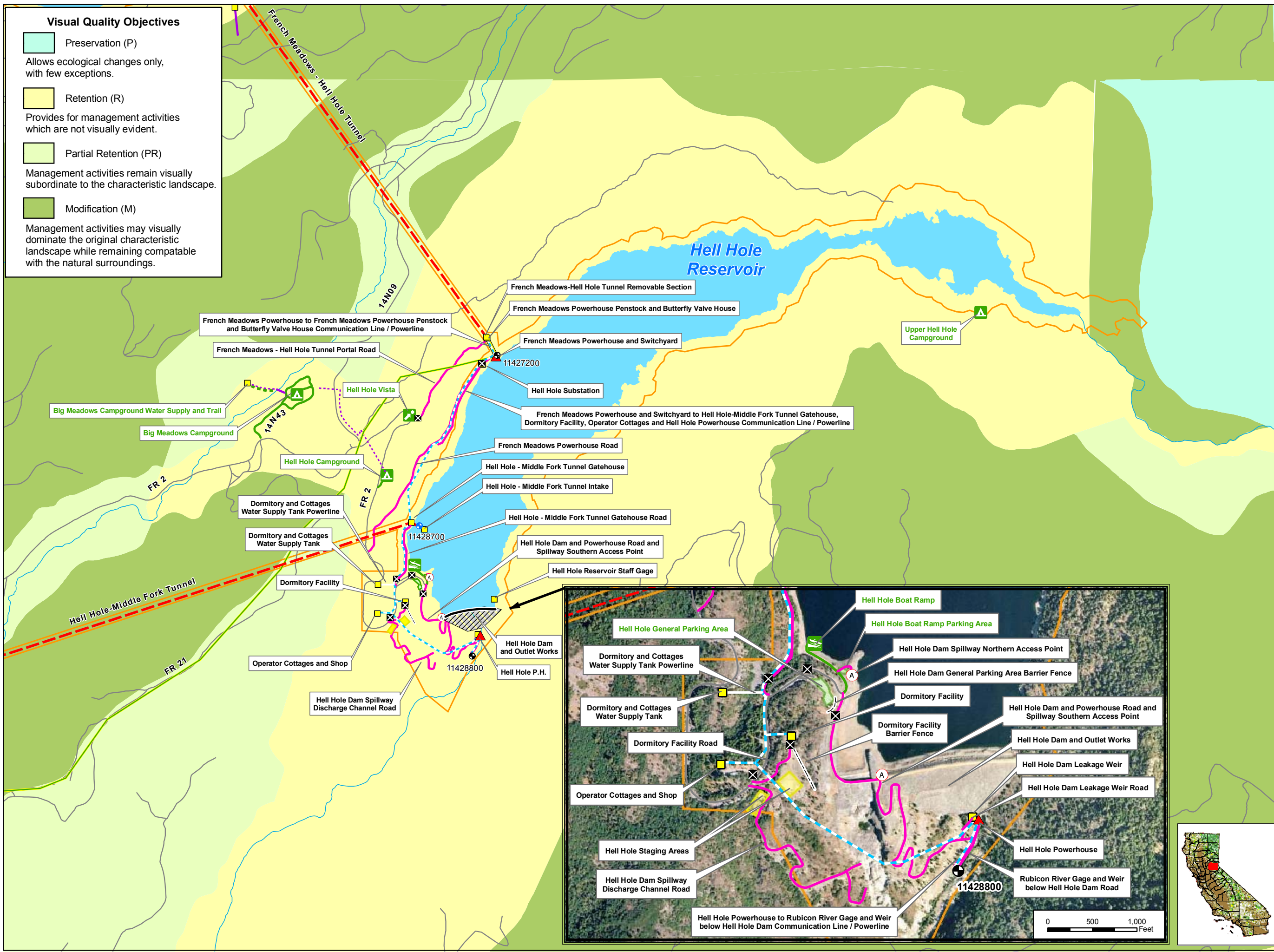


**Visual Quality Objectives**

- Preservation (P)  
Allows ecological changes only, with few exceptions.
- Retention (R)  
Provides for management activities which are not visually evident.
- Partial Retention (PR)  
Management activities remain visually subordinate to the characteristic landscape.
- Modification (M)  
Management activities may visually dominate the original characteristic landscape while remaining compatible with the natural surroundings.

**PCWA Facilities and Features**

- Dam
  - Ancillary and Other Facilities
  - Powerhouse
  - Gage
  - Reservoir Gage
  - Penstock
  - Tunnel
  - Pipeline
  - X Gate
  - A Access Point
  - Public Safety Fence
  - FERC Boundary
- Project Power and Communication Lines:**
- Communication
  - Power
  - Power (underground)
  - Communication/Power
  - Communication/Power (underground)
- Transportation**
- Road
  - Project Road
  - Project Trail
  - Recreation Access Road
  - Recreation Facility Water Supply Access Road or Trail
- Project Recreation Facilities**
- A Picnic Area
  - B Boat Ramp
  - C Scenic Viewpoint
  - D Developed Campground
  - Water Supply Line (Above ground)
  - Water Supply Line (Buried)
- Other Facilities**
- PG & E Transmission Lines:
- 230 kV
  - 60 kV



Placer County Water Agency  
Middle Fork American River Project  
**Map 12-1**  
**Visual Quality Objectives**  
in the Vicinity of the MFP  
Sheet 2 of 5  
Hell Hole Area

